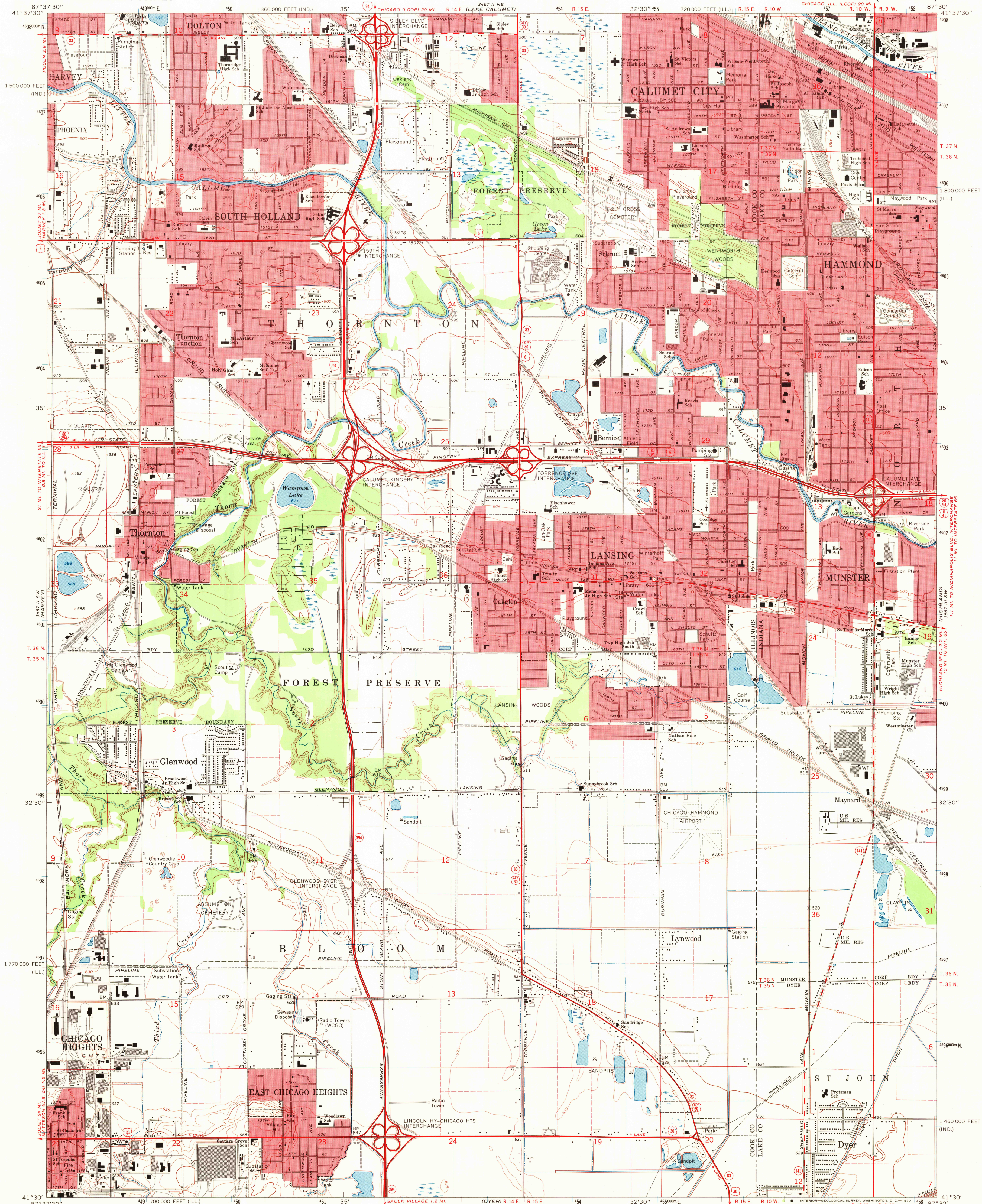
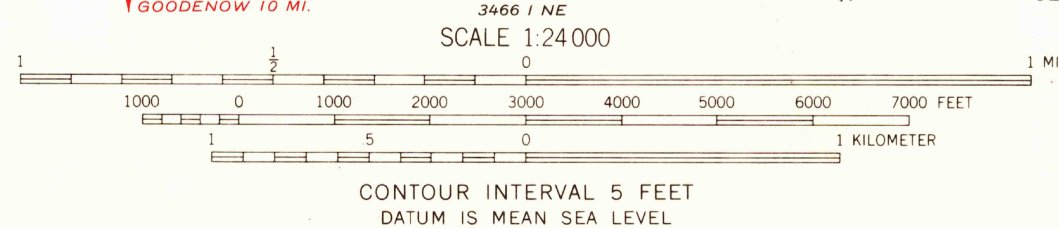


UNITED STATES
DEPARTMENT OF THE INTERIOR
GEOLOGICAL SURVEY

CALUMET CITY QUADRANGLE
ILLINOIS-INDIANA
7.5 MINUTE SERIES (TOPOGRAPHIC)



Mapped, edited, and published by the Geological Survey
in cooperation with Illinois Dept. of Registration and Education,
Geological Survey Division and Indiana Dept. of Natural Resources
Revised in cooperation with Indiana Dept. of Natural Resources
Control by USGS, USC&GS, and Cook County Highway Department
Topography by planetable surveys 1926. Revised from
aerial photographs taken 1967. Field checked 1968
Polyconic projection. 1927 North American datum
10,000-foot grids based on Illinois coordinate system, east zone,
and Indiana coordinate system, west zone
1000-meter Universal Transverse Mercator grid ticks,
zone 16, shown in blue
Fine red dashed lines indicate selected fence and field lines where
generally visible on aerial photographs. This information is unchecked
Red tint indicates areas in which only landmark buildings are shown



ROAD CLASSIFICATION
Primary highway, all weather, hard surface
Secondary highway, all weather, hard surface
Light-duty road, all weather, improved surface
Unimproved road, fair or dry weather
Interstate Route
U.S. Route
State Route

THIS MAP COMPLIES WITH NATIONAL MAP ACCURACY STANDARDS
FOR SALE BY U.S. GEOLOGICAL SURVEY, WASHINGTON, D.C. 20242,
THE STATE GEOLOGICAL SURVEY, URBANA, ILLINOIS 61801,
AND INDIANA DEPARTMENT OF NATURAL RESOURCES, INDIANAPOLIS, INDIANA 46204
A FOLDER DESCRIBING TOPOGRAPHIC MAPS AND SYMBOLS IS AVAILABLE ON REQUEST

CALUMET CITY, ILL.-IND.
N4130-W8730/7.5
1968
AMS 3467 II SE-SERIES V863

OCT 14 1970