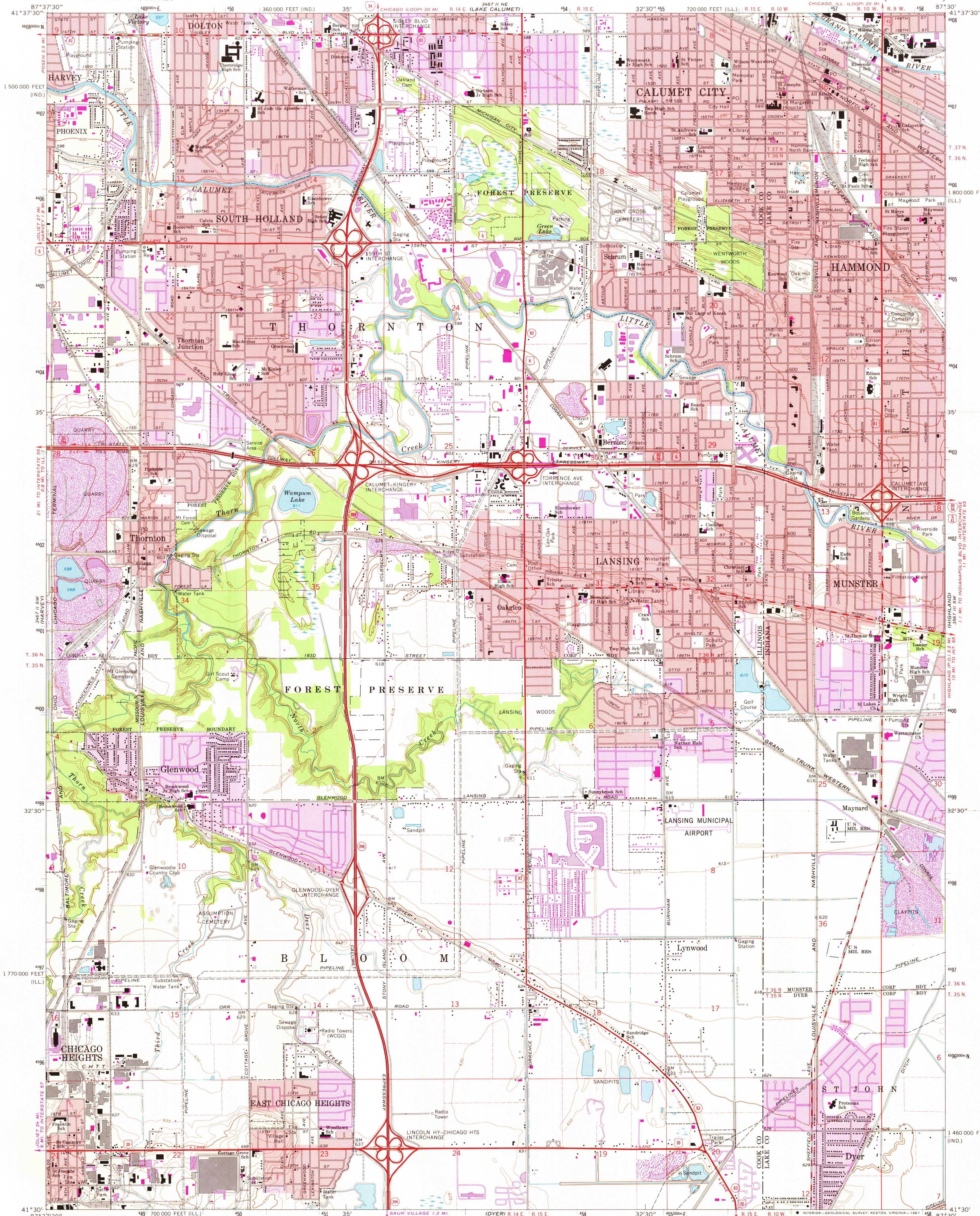


UNITED STATES
DEPARTMENT OF THE INTERIOR
GEOLOGICAL SURVEY

CALUMET CITY QUADRANGLE
ILLINOIS-INDIANA
7.5 MINUTE SERIES (TOPOGRAPHIC)



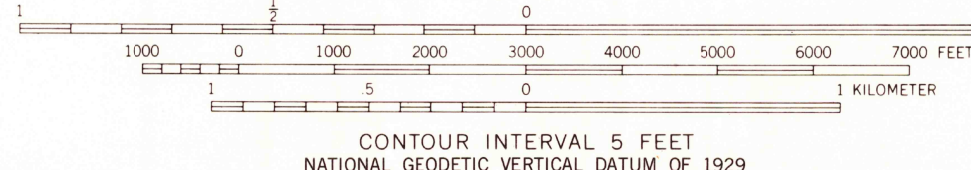
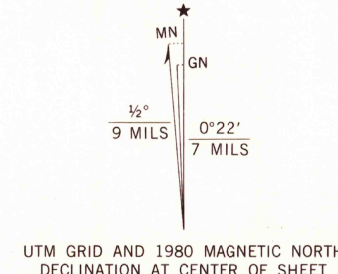
Maped, edited, and published by the Geological Survey in cooperation with Illinois Dept. of Registration and Education, Geological Survey Division and Indiana Dept. of Natural Resources. Revised in cooperation with Indiana Dept. of Natural Resources Control by USGS, NOS/NOAA, and Cook County Highway Department.

Topography by planimetric surveys 1926. Revised from aerial photographs taken 1967. Field checked 1968.

Polycyclic projection, 10,000-foot grids based on Illinois coordinate system, east zone, and Indiana coordinate system, west zone, 1000-meter Universal Mercator grid ticks, zone 16, shown in blue. 1927 North American Datum to place on the predicted North American Datum 1983 move the projection lines 1 meter north and 4 meters east as shown by dashed corner ticks.

Fine red dashed lines indicate selected fence and field lines where generally visible on aerial photographs. This information is unchecked.

Red tint indicates areas in which only landmark buildings are shown. There may be private inholdings within the boundaries of the National or State reservations shown on this map.



THIS MAP COMPLIES WITH NATIONAL MAP ACCURACY STANDARDS FOR SALE BY U. S. GEOLOGICAL SURVEY, RESTON, VIRGINIA 22092 AND INDIANA DEPARTMENT OF NATURAL RESOURCES, INDIANAPOLIS, INDIANA 46204. A FOLDER DESCRIBING TOPOGRAPHIC MAPS AND SYMBOLS IS AVAILABLE ON REQUEST.

Revisions shown in purple compiled in cooperation with State of Indiana agencies from aerial photographs taken 1977 and other source data. This information not field checked. Map edited 1980.

Purple tint indicates extension of urban areas.

ROAD CLASSIFICATION

| | |
|--|--|
| Primary highway, all weather, hard surface | Light-duty road, all weather, improved surface |
| Secondary highway, all weather, hard surface | Unimproved road, fair or dry weather |

Interstate Route U. S. Route State Route

CALUMET CITY, ILL.-IND. N4130-W8730/7.5

1968
PHOTOGRAPHED 1980
DMA 3467 II SE-SERIES V863

USGS
Historical File
National Mapping Div.

3400