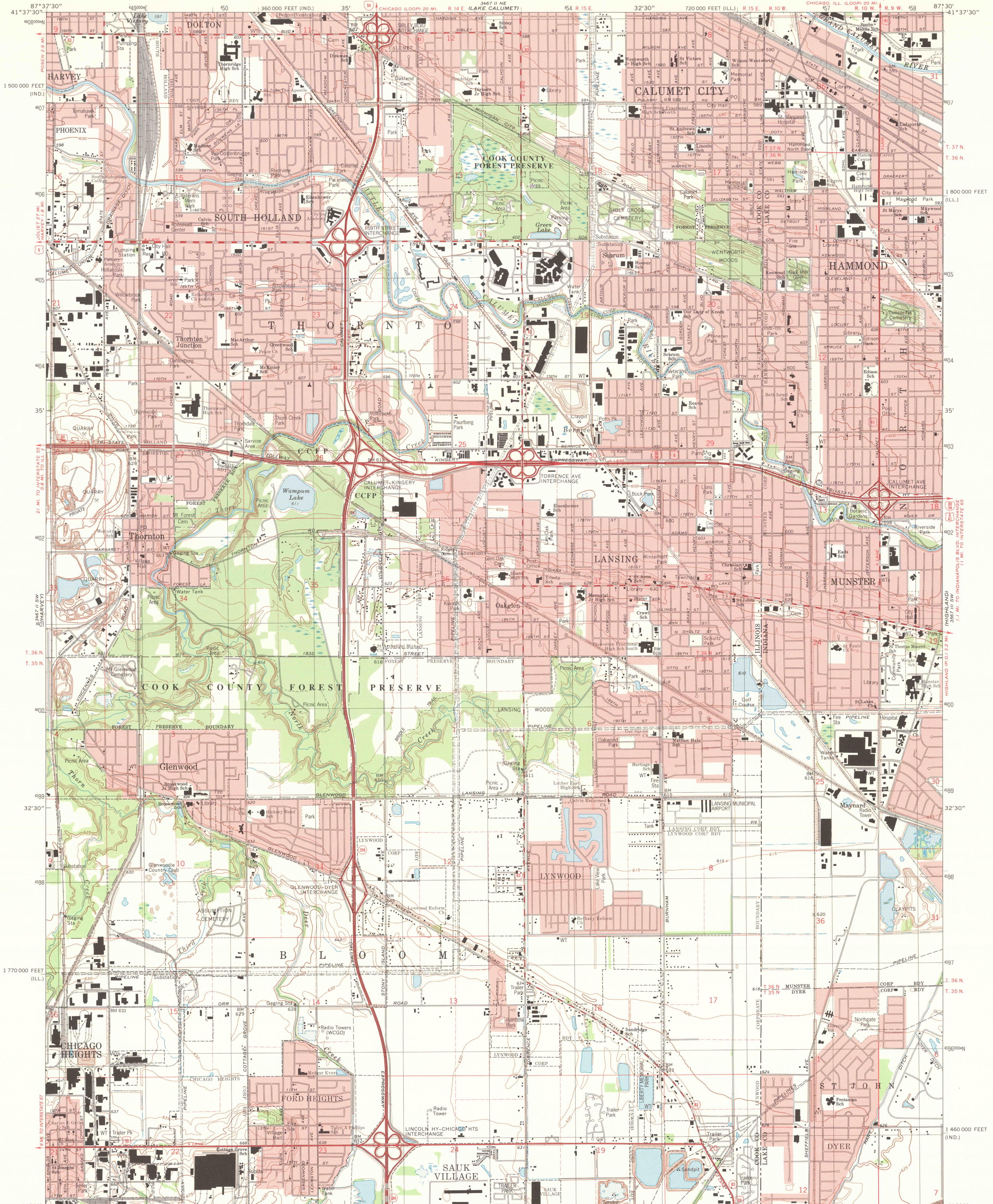


UNITED STATES
DEPARTMENT OF THE INTERIOR
GEOLOGICAL SURVEY

CALUMET CITY QUADRANGLE
ILLINOIS-INDIANA
7.5 MINUTE SERIES (TOPOGRAPHIC)

CHICAGO, ILL. (LOOP) 20 MI. R. 14 E. (LAKE CALUMET)
CHICAGO, ILL. (LOOP) 20 MI. R. 10 W. R. 9 N. W. R. 10 W. R. 9 N. W.



Produced by the United States Geological Survey
Control by USGS, NOS/NOAA and Cook County Highway Department
Topography by planetable surveys 1926. Revised from aerial photographs
taken 1988. Field checked 1991. Map edited 1991
Projection: Illinois coordinate system, east zone
(transverse Mercator)
10,000-foot grid ticks: Illinois coordinate system, east zone
and Indiana coordinate system, west zone
1000-meter Universal Transverse Mercator grid, zone 16
1927 North American Datum
The difference between 1927 North American Datum and North
American Datum of 1983 (NAD 83) for 7.5-minute intersections
is given in USGS Bulletin 1875. The NAD 83 is shown by
dashed corner ticks
There may be private inholdings within the boundaries of
the National or State reservations shown on this map
Red tint indicates areas in which only landmark buildings are shown
Fine red dashed lines indicate selected fence and field lines where
generally visible on aerial photographs. This information is unchecked

UTM GRID AND 1991 MAGNETIC NORTH
DECLINATION AT CENTER OF SHEET
1/2" = 27 MILES
0.22" = 7 MILES

SCALE 1:24 000
1 000 000 FEET
1 000 000 METERS
CONTOUR INTERVAL 5 FEET
NATIONAL GEODETIC VERTICAL DATUM OF 1929

COMPLIES WITH U.S. GEOLOGICAL SURVEY STANDARDS FOR SPATIAL ACCURACY CLASS 2
FOR SALE BY U.S. GEOLOGICAL SURVEY, DENVER, COLORADO 80225, OR RESTON, VIRGINIA 22092
AND ILLINOIS GEOLOGICAL SURVEY, CHAMPAIGN, ILLINOIS 61820
AND INDIANA DEPARTMENT OF NATURAL RESOURCES, INDIANAPOLIS, INDIANA 46204
A FOLDER DESCRIBING TOPOGRAPHIC MAPS AND SYMBOLS IS AVAILABLE ON REQUEST



ROAD CLASSIFICATION
Primary highway, hard surface
Secondary highway, hard surface
Unimproved road, hard or improved surface
Interstate Route
U. S. Route
State Route

CALUMET CITY, ILL.-IND.
41087-E5-F024
1991
DMA 3467 II SE-SERIES 863

