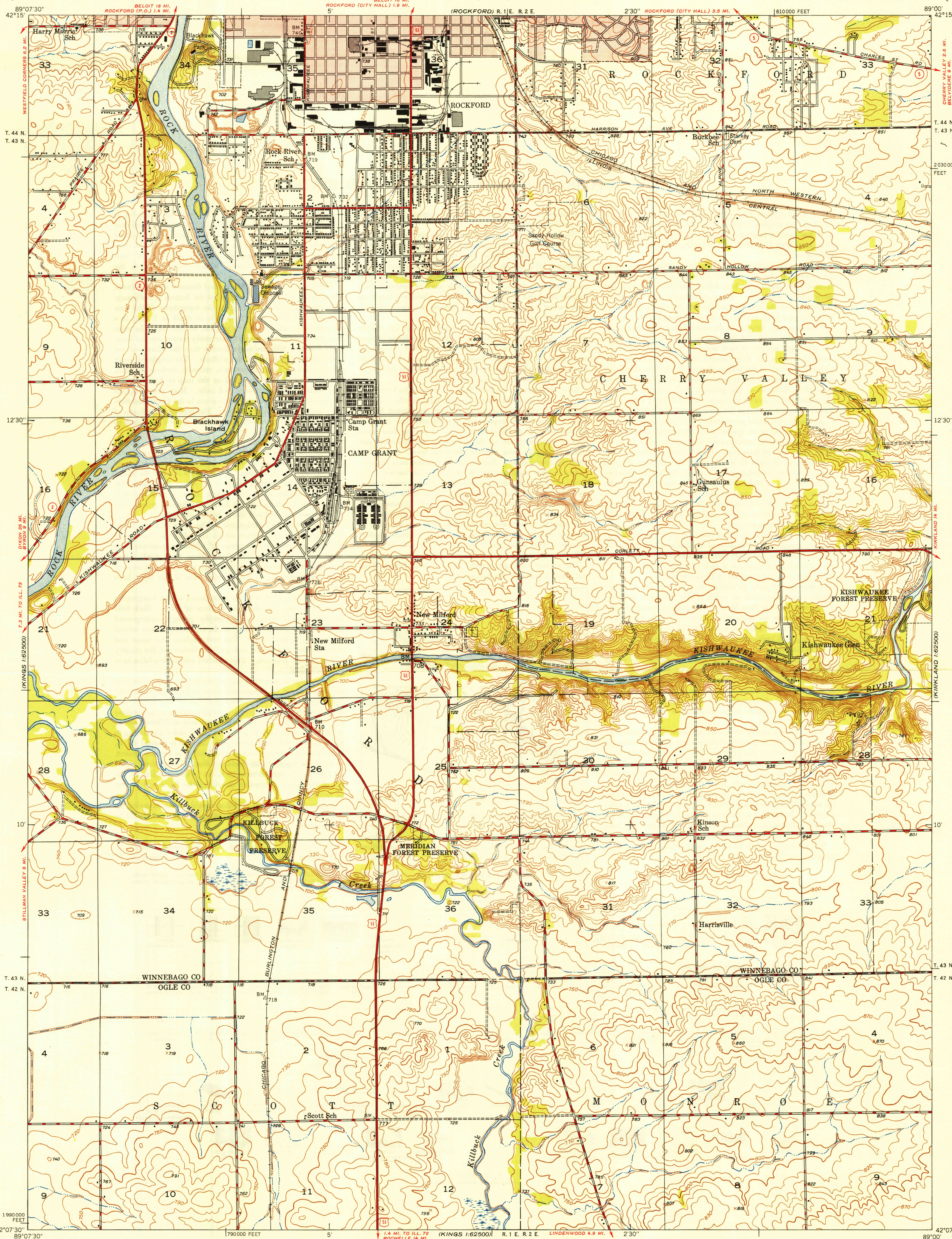


UNITED STATES
DEPARTMENT OF THE INTERIOR
GEOLOGICAL SURVEY

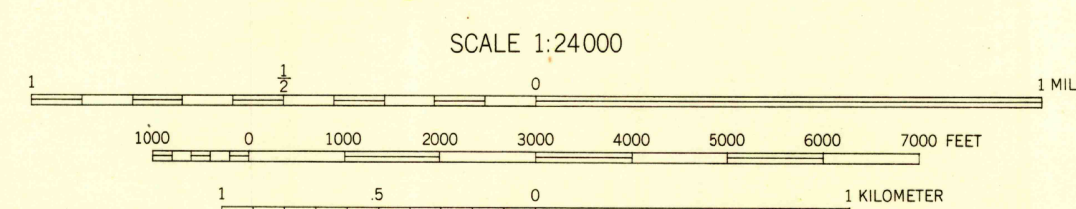
STATE OF ILLINOIS
DWIGHT H. GREEN, GOVERNOR
DEPARTMENT OF REGISTRATION AND EDUCATION
FRANK G. THOMPSON, DIRECTOR
M. M. LEIGHTON, CHIEF, URBANA

CAMP GRANT QUADRANGLE
ILLINOIS
7.5 MINUTE SERIES (TOPOGRAPHIC)



Mapped, edited, and published by the Geological Survey
Control by USGS and USC&GS
Topography from aerial photographs by multiplex methods,
and by plane-table surveys. Aerial photographs taken 1945
Field check 1947
Polyconic projection. 1927 North American datum
10,000-foot grid based on Illinois coordinate system,
west zone
Red tint indicates area in which
only landmark buildings are shown

TRUE NORTH
MAGNETIC NORTH
APPROXIMATE MEAN
DECLINATION, 1947



CONTOUR INTERVAL 10 FEET
DATUM IS MEAN SEA LEVEL

THIS MAP COMPLIES WITH NATIONAL MAP ACCURACY STANDARDS
FOR SALE BY U. S. GEOLOGICAL SURVEY, WASHINGTON 25, D. C.
AND BY THE STATE GEOLOGICAL SURVEY, URBANA, ILLINOIS

USGS
Historical File
Topographic Division

ROAD CLASSIFICATION
HARD-SURFACE ALL WEATHER ROADS DRY WEATHER ROADS
Heavy-duty ———— 2 LANE 1 LANE Improved dirt ————
Medium-duty ———— 2 LANE 1 LANE Unimproved dirt ————
Loose-surface, graded, or narrow hard-surface ————
U. S. Route State Route

CAMP GRANT, ILL.
N4207.5—W8900/7.5

PRINTED 1949

U.S.G.S.
FILE COPY
Inspection and Editing

4225