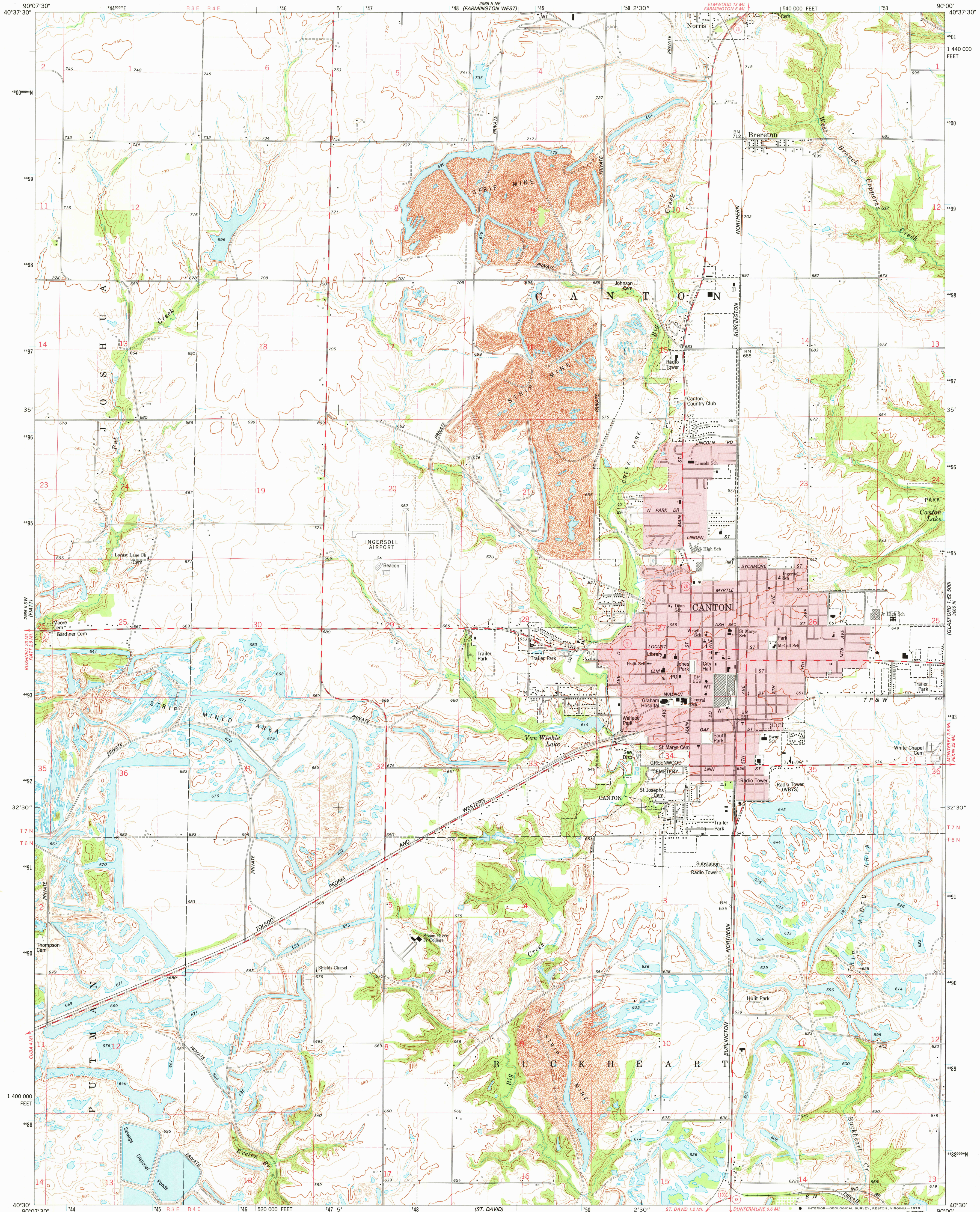


UNITED STATES
DEPARTMENT OF THE INTERIOR
GEOLOGICAL SURVEY

CANTON QUADRANGLE
ILLINOIS—FULTON CO.
7.5 MINUTE SERIES (TOPOGRAPHIC)
SE/4 CANTON 15' QUADRANGLE



Mapped, edited, and published by the Geological Survey

Control by USGS and NOS/NOAA

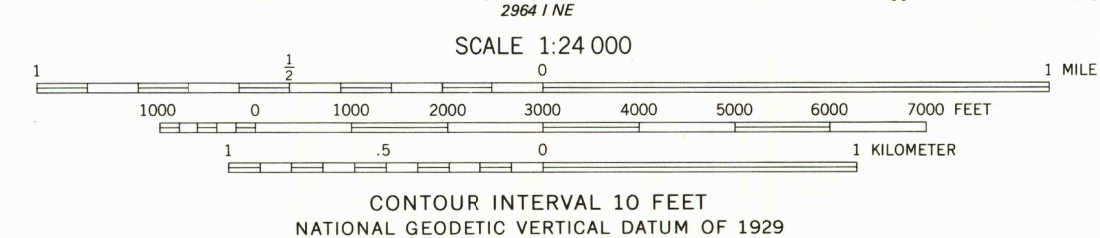
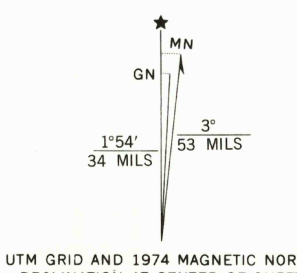
Topography by photogrammetric methods from aerial photographs taken 1973. Field checked 1974

Projection and 10,000-foot grid ticks: Illinois coordinate system, west zone (transverse Mercator)

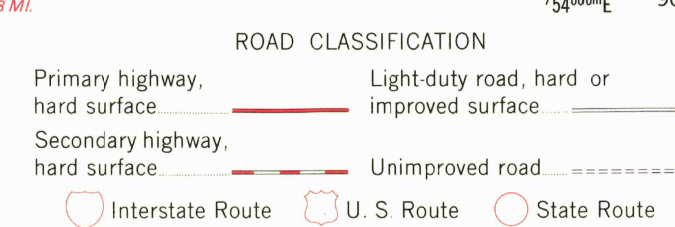
1000-meter Universal Transverse Mercator grid ticks, zone 15, shown in blue. 1927 North American datum

Red tint indicates areas in which only landmark buildings are shown

Fine red dashed lines indicate selected fence and field lines where generally visible on aerial photographs. This information is unchecked



THIS MAP COMPLIES WITH NATIONAL MAP ACCURACY STANDARDS
FOR SALE BY U. S. GEOLOGICAL SURVEY, RESTON, VIRGINIA 22092
AND BY THE STATE GEOLOGICAL SURVEY, URBANA, ILLINOIS 61801
A FOLDER DESCRIBING TOPOGRAPHIC MAPS AND SYMBOLS IS AVAILABLE ON REQUEST



USGS
Historical File
Topographic Division

CANTON, ILL.
SE/4 CANTON 15' QUADRANGLE
N4030-W9000/7.5

1974

AMS 2965 II SE-SERIES V863

JUL 26 1978

300