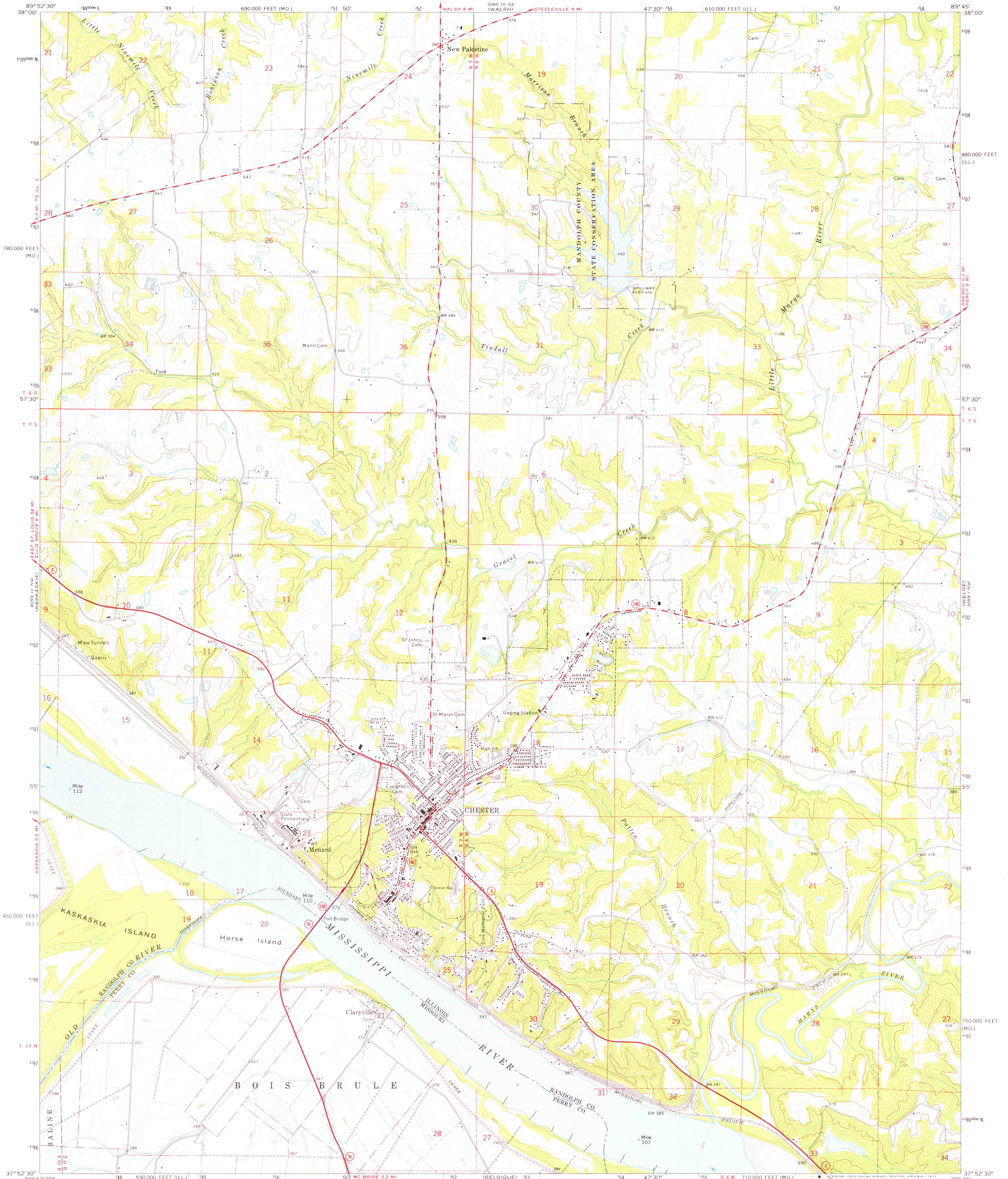
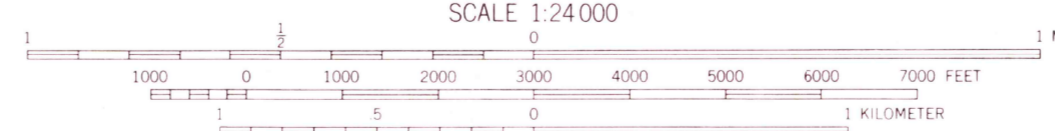


UNITED STATES
DEPARTMENT OF THE INTERIOR
GEOLOGICAL SURVEY

CHESTER QUADRANGLE
ILLINOIS—MISSOURI
7.5 MINUTE SERIES (TOPOGRAPHIC)
NE 1/4 CHESTER 15' QUADRANGLE



Mapped, edited, and published by the Geological Survey
Control by USGS and USC&GS
Topography by photogrammetric methods from aerial
photographs taken 1968. Field checked 1970
Polyconic projection. 1927 North American datum
10,000-foot grids based on Illinois coordinate system, west zone
and Missouri coordinate system, east zone
1000-meter Universal Transverse Mercator grid ticks,
zone 16, shown in blue
Fine red dashed lines indicate selected fence and field lines where
generally visible on aerial photographs. This information is unchecked



THIS MAP COMPLIES WITH NATIONAL MAP ACCURACY STANDARDS
FOR SALE BY U. S. GEOLOGICAL SURVEY, DENVER, COLORADO 80225, OR RESTON, VIRGINIA 22092.
STATE GEOLOGICAL SURVEY, URBANA, ILLINOIS 61801
AND THE DIVISION OF RESEARCH AND TECHNICAL INFORMATION
MISSOURI DEPARTMENT OF NATURAL RESOURCES, ROLLA, MISSOURI 65401
A FOLDER DESCRIBING TOPOGRAPHIC MAPS AND SYMBOLS IS AVAILABLE ON REQUEST

ROAD CLASSIFICATION
Primary highway, all weather, hard surface
Secondary highway, all weather, hard surface
Light-duty road, all weather, improved surface
Unimproved road, fair or dry weather
State Route



USGS
Historical File
Topographic Division

CHESTER, ILL.—MO.
NE 1/4 CHESTER 15' QUADRANGLE
N3752.5—W8945/7.5
1970
AMS 3059 IV NE—SERIES V863

7200
JUL 18 1977