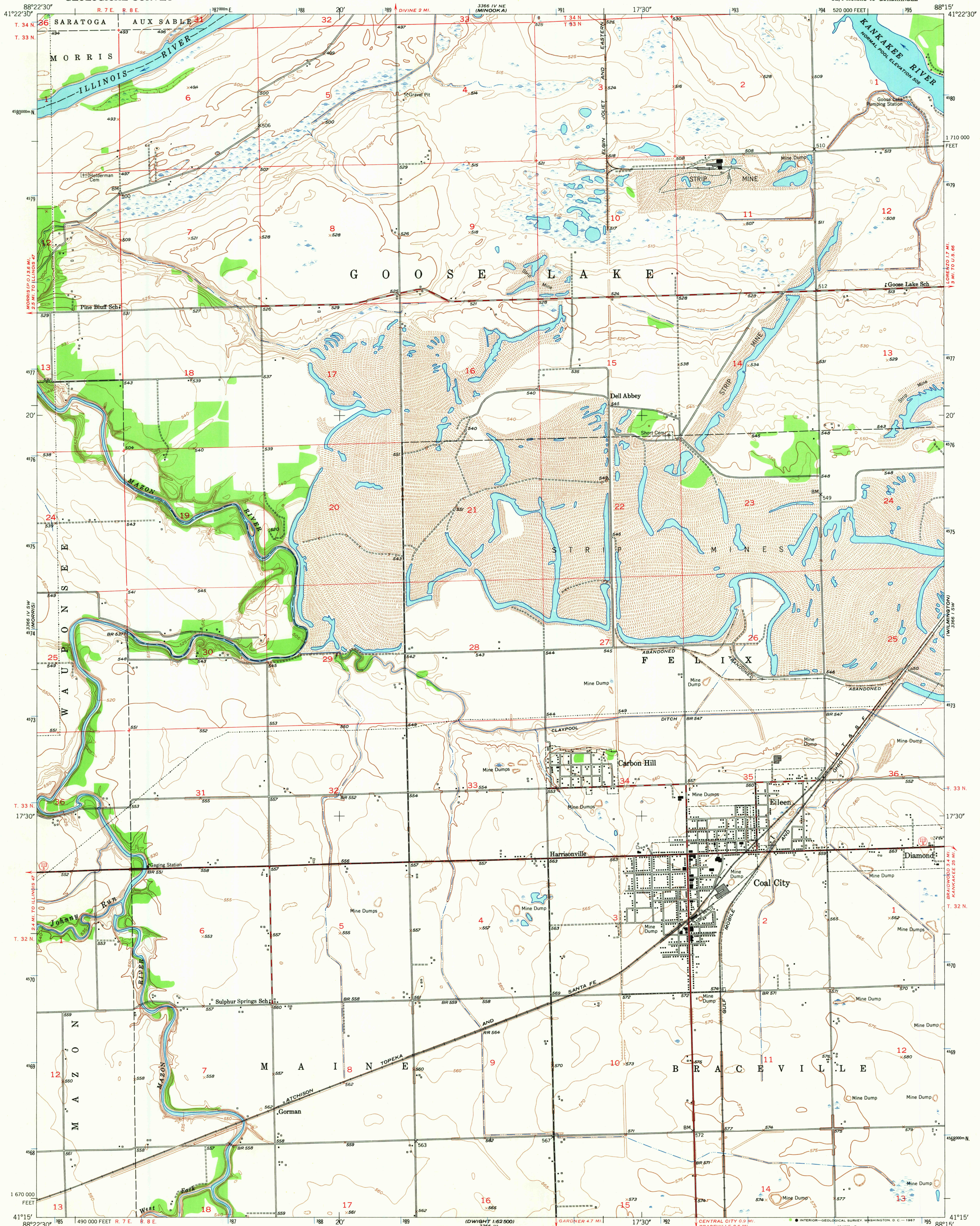


UNITED STATES
DEPARTMENT OF THE INTERIOR
GEOLOGICAL SURVEY

COAL CITY QUADRANGLE
ILLINOIS-GRUNDY CO.
7.5 MINUTE SERIES (TOPOGRAPHIC)
SE/4 MORRIS 15' QUADRANGLE



Mapped, edited, and published by the Geological Survey
Control by USGS and USC&GS
Culture and drainage in part compiled from aerial photographs
taken 1952. Topography by plane-table surveys 1953
Polyconic projection. 1927 North American datum
10,000-foot grid based on Illinois coordinate system;
east zone
1000-meter Universal Transverse Mercator grid ticks,
zone 16, shown in blue

UTM GRID AND 1953 MAGNETIC NORTH
DECLINATION AT CENTER OF SHEET

SCALE 1:24,000
CONTOUR INTERVAL 5 FEET
DATUM IS MEAN SEA LEVEL

USGS
Historical File
Topographic Division

ROAD CLASSIFICATION
Heavy-duty 4 LANE 16 LANE Light-duty
Medium-duty 4 LANE 16 LANE Unimproved dirt
U. S. Route State Route

U.S.G.S.
TOPOGRAPHIC DIVISION

COAL CITY, ILL.
SE/4 MORRIS 15' QUADRANGLE
N4115-W8815/7.5

1953

AMS 3366 IV SE-SERIES V863

THIS MAP COMPLIES WITH NATIONAL MAP ACCURACY STANDARDS
FOR SALE BY U. S. GEOLOGICAL SURVEY, WASHINGTON, D. C. 20242
AND BY THE STATE GEOLOGICAL SURVEY, URBANA, ILLINOIS 61801
A FOLDER DESCRIBING TOPOGRAPHIC MAPS AND SYMBOLS IS AVAILABLE ON REQUEST

3200

NOV 22 1967