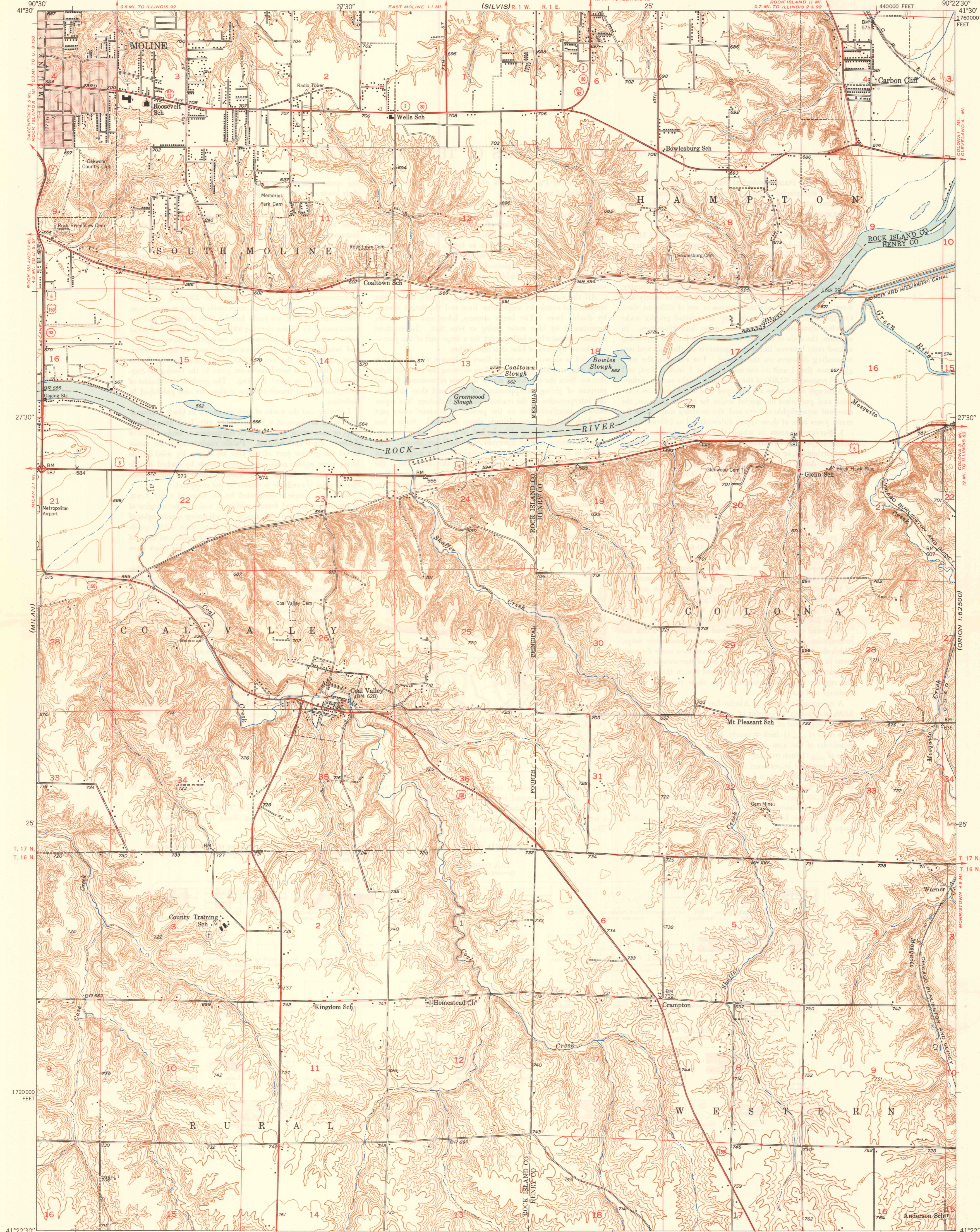
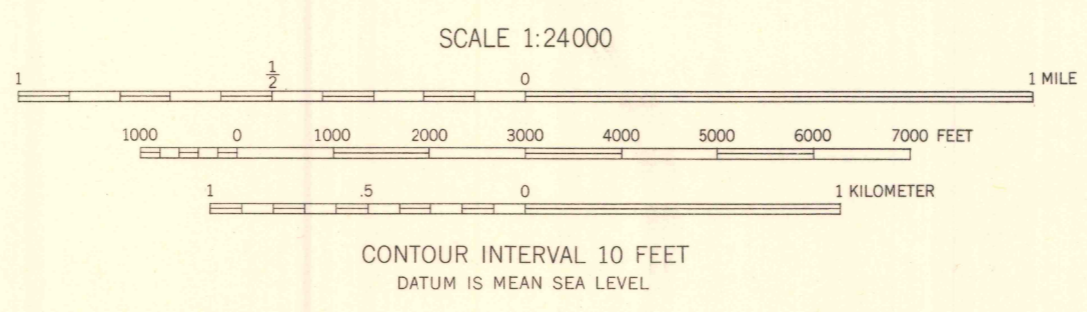


(DAVENPORT)

(PORT BYRON)



Mapped, edited, and published by the Geological Survey
Control by USGS and USC&GS
Topography from aerial photographs by multiplex methods
and by plane-table surveys 1948
Aerial photographs taken 1945
Polyconic projection, 1927 North American datum
10,000-foot grid based on Illinois coordinate system,
west zone
Red tint indicates areas in which only
landmark buildings are shown



ROAD CLASSIFICATION
HEAVY-SURFACE ALL WEATHER ROADS DRY WEATHER ROADS
Heavy-duty... 4 LANE LANE Improved dirt...
Medium-duty... 4 LANE LANE Unimproved dirt...
Loose-surface, graded, or narrow hard-surface...
U. S. Route State Route

COAL VALLEY, ILL.
NW 1/4 ORION 18 QUADRANGLE
N4122.5-W9022.5/7.5

EDITION OF 1949

THIS MAP COMPLIES WITH NATIONAL MAP ACCURACY STANDARDS
FOR SALE BY U. S. GEOLOGICAL SURVEY, WASHINGTON 25, D. C.
AND BY THE STATE GEOLOGICAL SURVEY, URBANA, ILLINOIS

(MILAN 1:62,500)

(ORION 1:62,500)

TRUE NORTH
MAGNETIC NORTH
APPROXIMATE MEAN
DECLINATION, 1948