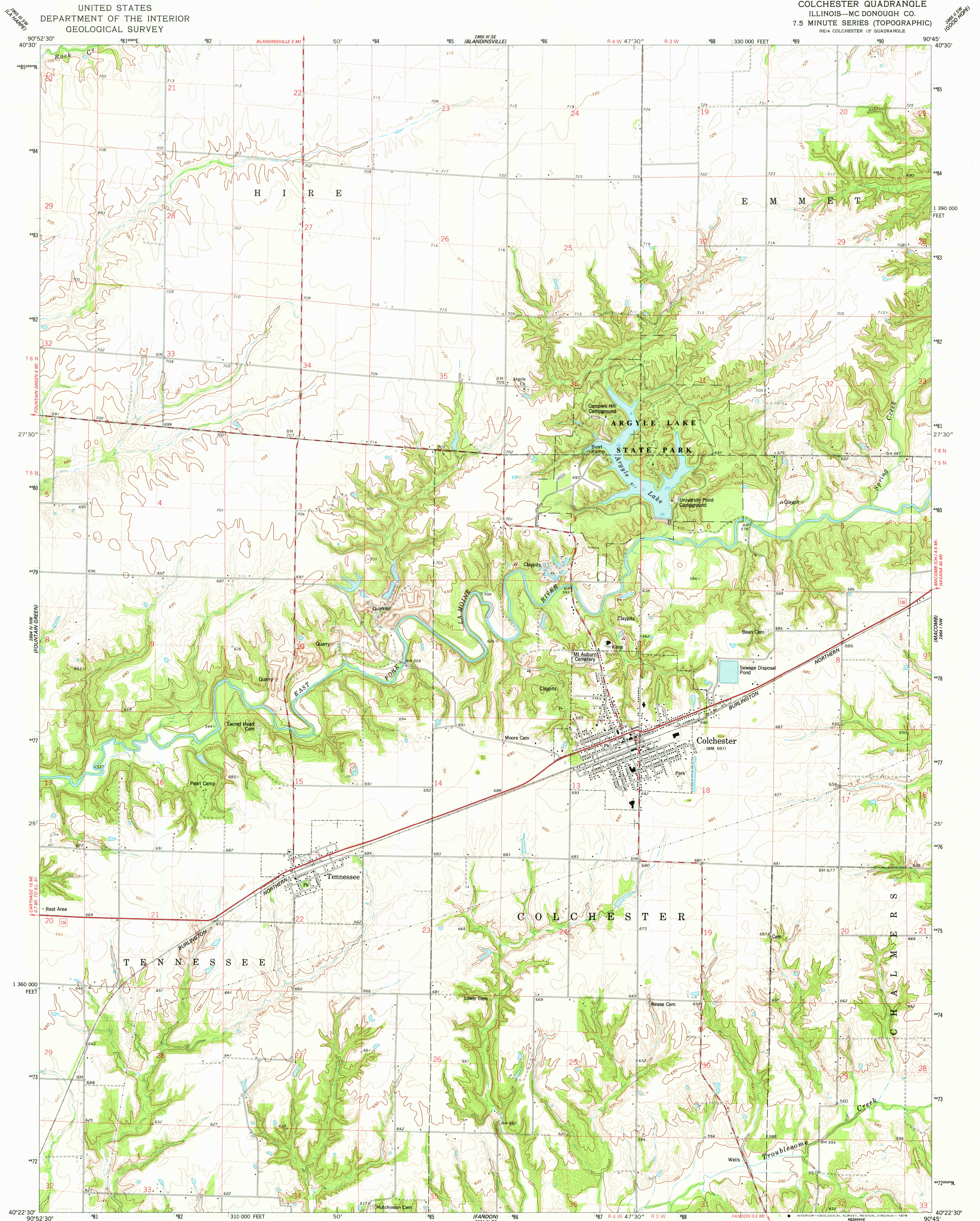


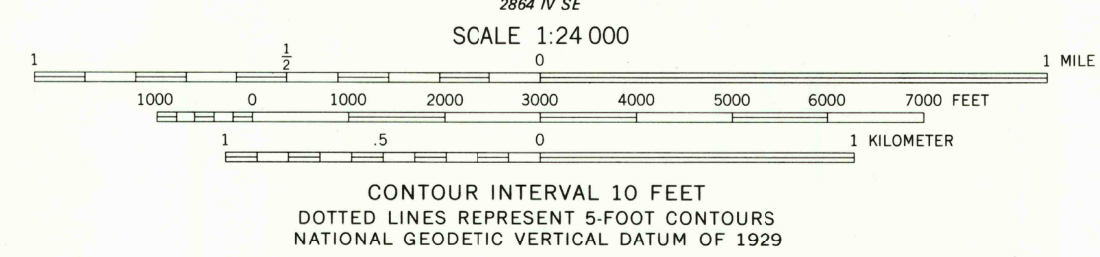
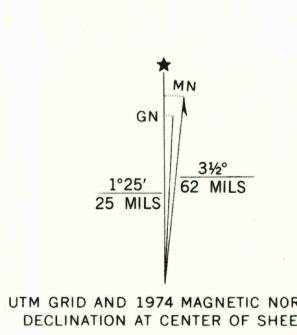
UNITED STATES
DEPARTMENT OF THE INTERIOR
GEOLOGICAL SURVEY

COLCHESTER QUADRANGLE
ILLINOIS—MC DONOUGH CO.
7.5 MINUTE SERIES (TOPOGRAPHIC)
NE/4 COLCHESTER 15' QUADRANGLE



Mapped, edited, and published by the Geological Survey

Control by USGS and NOS/NOAA
Topography by photogrammetric methods from aerial photographs taken 1973. Field checked 1974
Hydrography compiled from information furnished by Illinois Department of Conservation
Projection and 10,000-foot grid ticks: Illinois coordinate system, west zone (transverse Mercator)
1000-meter Universal Transverse Mercator grid ticks, zone 15, shown in blue. 1927 North American datum
Fine red dashed lines indicate selected fence and field lines where generally visible on aerial photographs. This information is unchecked



THIS MAP COMPLIES WITH NATIONAL MAP ACCURACY STANDARDS
FOR SALE BY U. S. GEOLOGICAL SURVEY, RESTON, VIRGINIA 22092
AND BY THE STATE GEOLOGICAL SURVEY, URBANA, ILLINOIS 61801
A FOLDER DESCRIBING TOPOGRAPHIC MAPS AND SYMBOLS IS AVAILABLE ON REQUEST



QUADRANGLE LOCATION

ROAD CLASSIFICATION
Primary highway, hard surface
Secondary highway, hard surface
Unimproved road
Interstate Route
U. S. Route
State Route

USGS
Historical File
Topographic Division

COLCHESTER, ILL.
NE/4 COLCHESTER 15' QUADRANGLE
N4022.5—W9045/7.5
1974

AMS 2864 IV NE—SERIES V883

JUL 26 1978