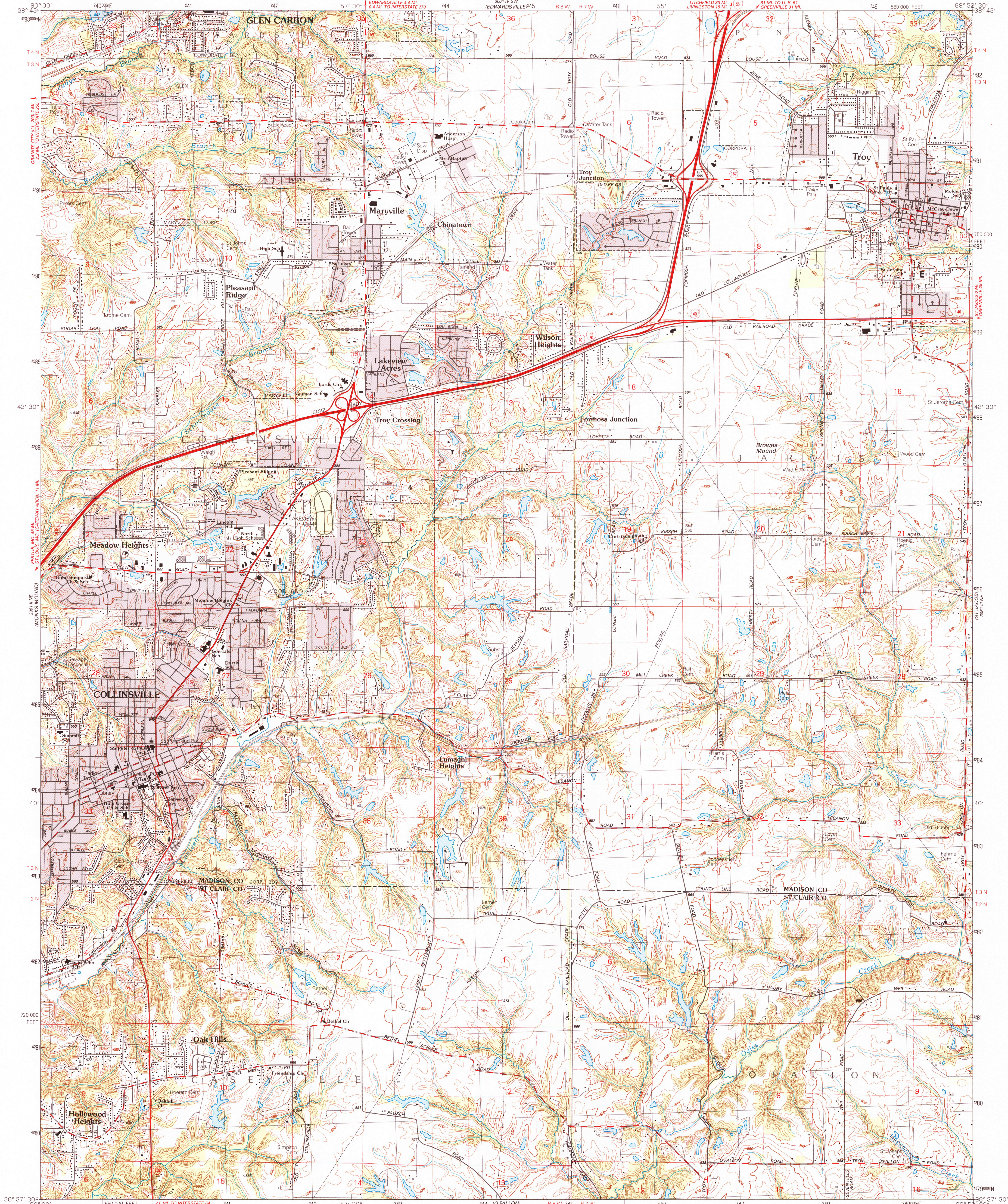


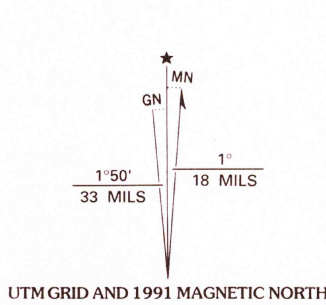
UNITED STATES  
DEPARTMENT OF THE INTERIOR  
GEOLOGICAL SURVEY

STATE OF ILLINOIS  
DEPARTMENT OF ENERGY AND NATURAL RESOURCES  
GEOLOGICAL SURVEY DIVISION  
CHAMPAIGN, ILLINOIS

COLLINSVILLE QUADRANGLE  
ILLINOIS  
7.5 MINUTE SERIES (TOPOGRAPHIC)



Produced by the United States Geological Survey  
Control by USGS and NOS/NOAA  
Topography by photogrammetric methods from aerial photographs taken 1986. Field checked 1988. Map edited 1991  
Supersedes map dated 1974  
Projection and 10,000-foot grid ticks: Illinois coordinate system, west zone (transverse Mercator)  
1000-meter Universal Transverse Mercator grid, zone 16  
1927 North American Datum  
To place on the predicted North American Datum 1983, move the projection lines 2 meters south and 8 meters east as shown by dashed corner ticks  
Gray tint indicates areas in which only landmark buildings are shown  
Fine red dashed lines indicate selected fence and field lines where generally visible on aerial photographs. This information is unchecked

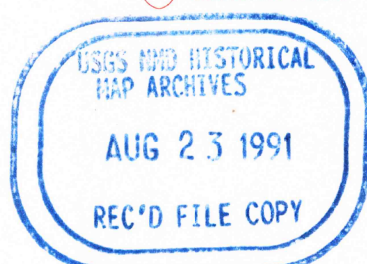


SCALE 1:24 000  
1 5 0 5 1000 0 1000 2000 3000 4000 5000 6000 7000 8000 9000 10 000  
KILOMETERS  
METERS  
MILES  
FEET  
CONTOUR INTERVAL 10 FEET  
NATIONAL GEODETIC VERTICAL DATUM OF 1929

THIS MAP COMPLIES WITH NATIONAL MAP ACCURACY STANDARDS  
FOR SALE BY U. S. GEOLOGICAL SURVEY, DENVER, COLORADO 80225, OR RESTON, VIRGINIA 22092  
AND ILLINOIS GEOLOGICAL SURVEY, CHAMPAIGN, ILLINOIS 61820  
A FOLDER DESCRIBING TOPOGRAPHIC MAPS AND SYMBOLS IS AVAILABLE ON REQUEST



ROAD CLASSIFICATION  
Primary highway, hard surface ..... Light-duty road, hard or improved surface .....  
Secondary highway, hard surface ..... Unimproved road .....  
Interstate Route U. S. Route State Route



COLLINSVILLE, ILL.  
38089-F8-TF-024  
1991  
DMA 3061111 NW-SERIES V863