

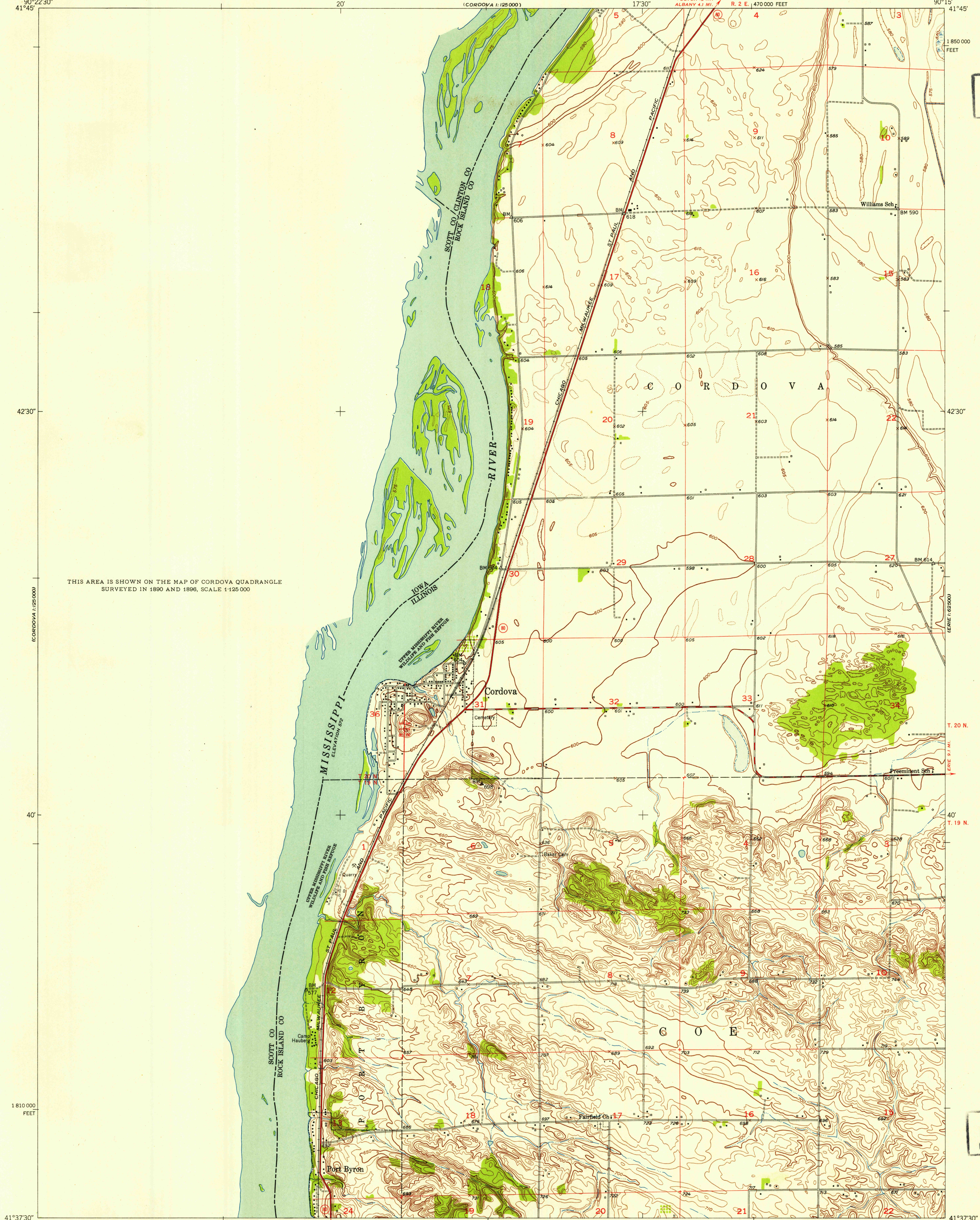
UNITED STATES
DEPARTMENT OF THE INTERIOR
GEOLOGICAL SURVEY

STATE OF ILLINOIS
WILLIAM G. STRATTON, GOVERNOR
DEPARTMENT OF REGISTRATION AND EDUCATION
VERA M. BINKS, DIRECTOR
GEOLOGICAL SURVEY DIVISION, M. M. LEIGHTON, CHIEF
URBANA, ILLINOIS

CORDOVA QUADRANGLE
ILLINOIS-IOWA
7.5 MINUTE SERIES (TOPOGRAPHIC)

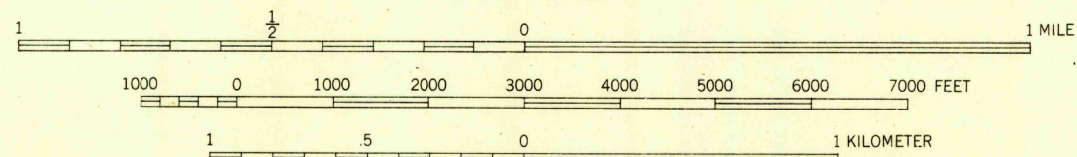
U. S. G. S.
FILE COPY
Inspection and Editing

THIS AREA IS SHOWN ON THE MAP OF CORDOVA QUADRANGLE
SURVEYED IN 1890 AND 1896, SCALE 1:125,000



Mapped, edited, and published by the Geological Survey
Control by USGS, USC&GS, and USCE
Culture and drainage in part compiled from aerial photographs
taken 1938. Topography by plane-table surveys 1952
and in part by U. S. Corps of Engineers
Polyconic projection. 1927 North American datum
10,000-foot grid based on Illinois coordinate system,
west zone

TRUE NORTH
MAGNETIC NORTH
APPROXIMATE MEAN
DECLINATION, 1952



THIS MAP COMPLIES WITH NATIONAL MAP ACCURACY STANDARDS
FOR SALE BY U. S. GEOLOGICAL SURVEY, WASHINGTON 25, D. C.
AND BY THE STATE GEOLOGICAL SURVEY, URBANA, ILLINOIS
A FOLDER DESCRIBING TOPOGRAPHIC MAPS AND SYMBOLS IS AVAILABLE ON REQUEST

USGS
Historical File
Topographic Division



ROAD CLASSIFICATION
Heavy-duty 4 LANE 16 LANE Light-duty
Medium-duty 4 LANE 16 LANE Unimproved dirt
U. S. Route State Route

CORDOVA, ILL.-IOWA
N4137.5-W9015/7.5
1952

U. S. G. S.
FILE COPY
Inspection and Editing

DEC 10 1953

2555