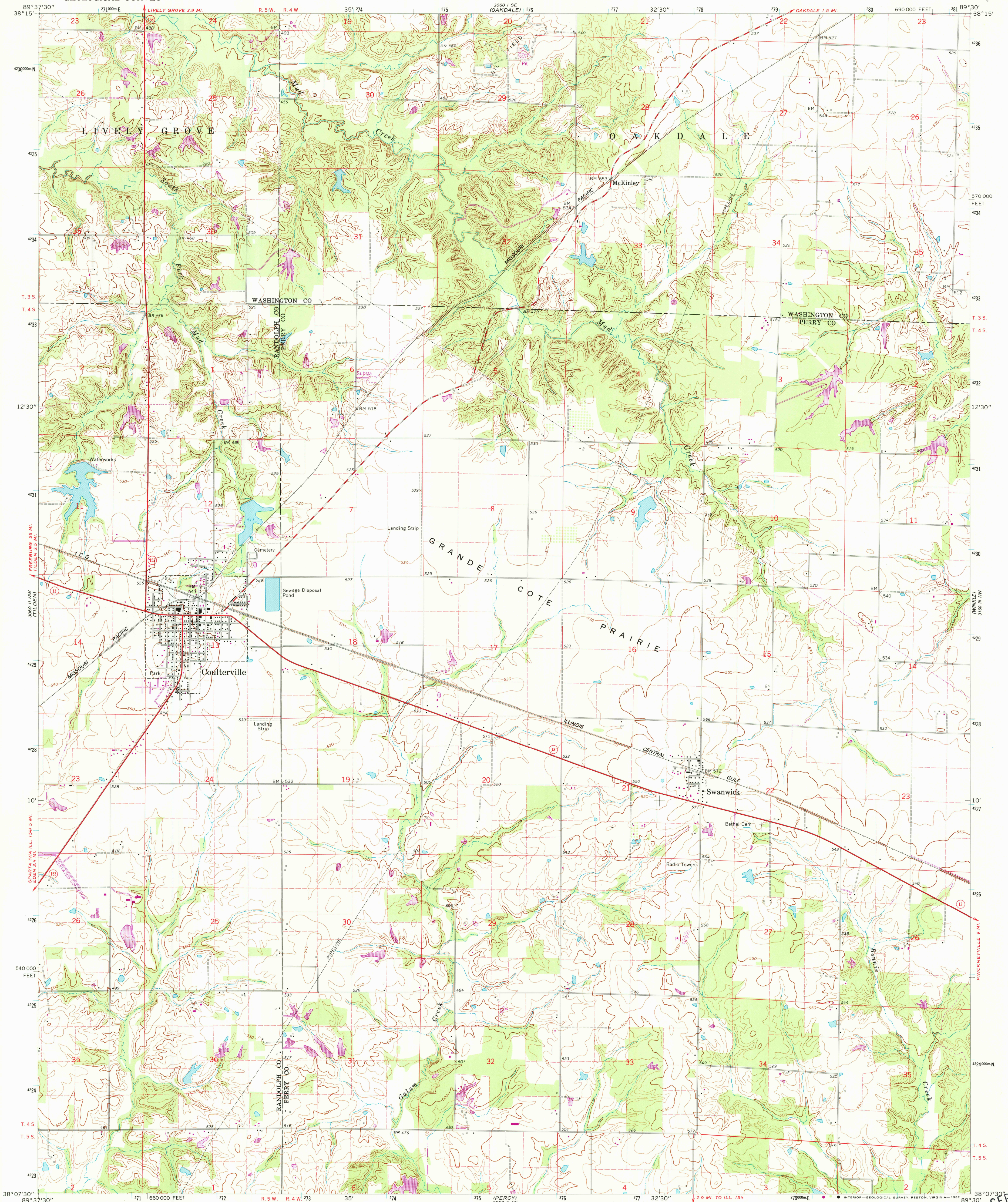


UNITED STATES
DEPARTMENT OF THE INTERIOR
GEOLOGICAL SURVEY

COULTERVILLE QUADRANGLE
ILLINOIS
7.5 MINUTE SERIES (TOPOGRAPHIC)



Mapped, edited, and published by the Geological Survey

Control by USGS and USC&GS

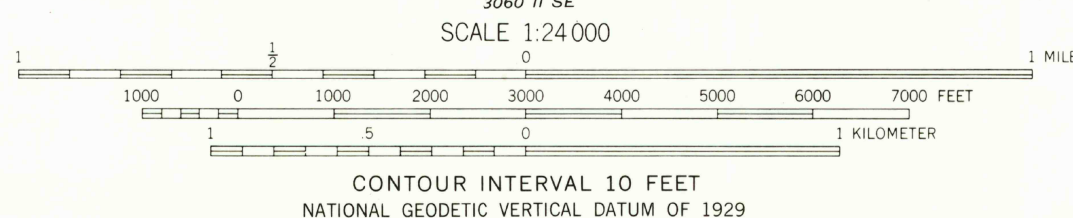
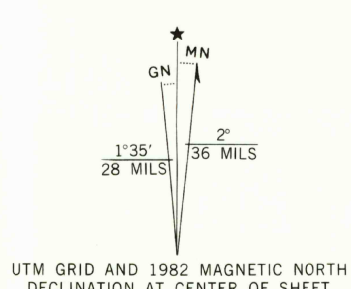
Topography by photogrammetric methods from aerial
photographs taken 1960. Field checked 1965

Polyconic projection. 1927 North American datum
10,000-foot grid based on Illinois coordinate system, west zone
1000-meter Universal Transverse Mercator grid ticks,
zone 16, shown in blue

Fine red dashed lines indicate selected fence and field lines where
generally visible on aerial photographs. This information is unchecked

To place on the predicted North American Datum 1983
move the projection lines 2 meters south and
7 meters east as shown by dashed corner ticks

Revisions shown in purple compiled from aerial photographs taken 1980
and other sources. This information not field checked. Map edited 1982



THIS MAP COMPLIES WITH NATIONAL MAP ACCURACY STANDARDS
FOR SALE BY U. S. GEOLOGICAL SURVEY, RESTON, VIRGINIA 22092
AND BY THE STATE GEOLOGICAL SURVEY, CHAMPAIGN, ILLINOIS 61820
A FOLDER DESCRIBING TOPOGRAPHIC MAPS AND SYMBOLS IS AVAILABLE ON REQUEST



ROAD CLASSIFICATION
Heavy-duty ——— Light-duty ———
Medium-duty ——— Unimproved dirt ———
○ State Route

COULTERVILLE, ILL.

N3807.5—W8930/7.5

1965
PHOTOREVISED 1982
DMA 3060 II NE—SERIES V863

SEP 28 1982
(PHOTOGRAPHIC)