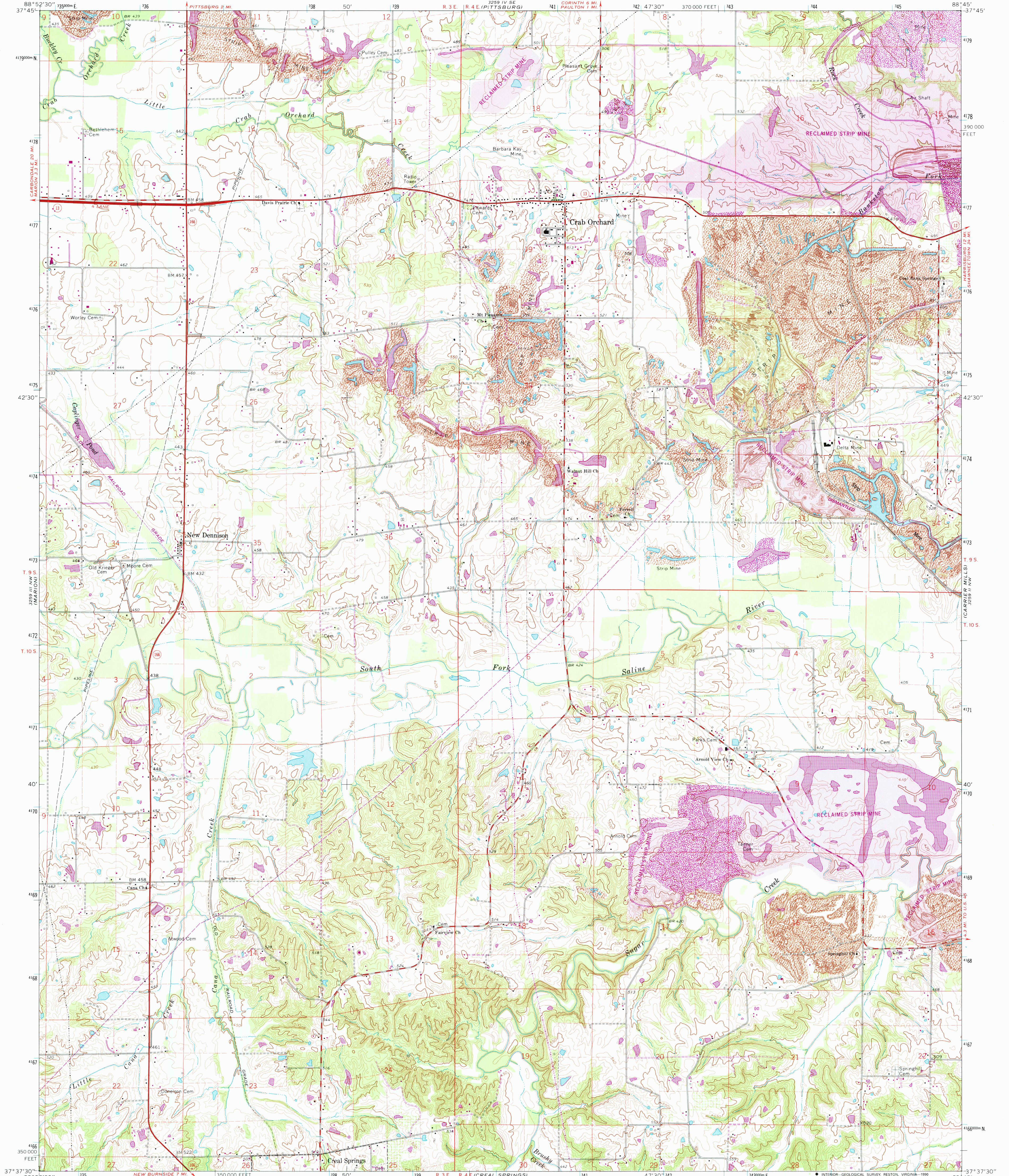


UNITED STATES
DEPARTMENT OF THE INTERIOR
GEOLOGICAL SURVEY

CRAB ORCHARD QUADRANGLE
ILLINOIS—WILLIAMSON CO.
7.5 MINUTE SERIES (TOPOGRAPHIC)



Mapped, edited and published by the Geological Survey

Control by USGS and NCS/NOAA

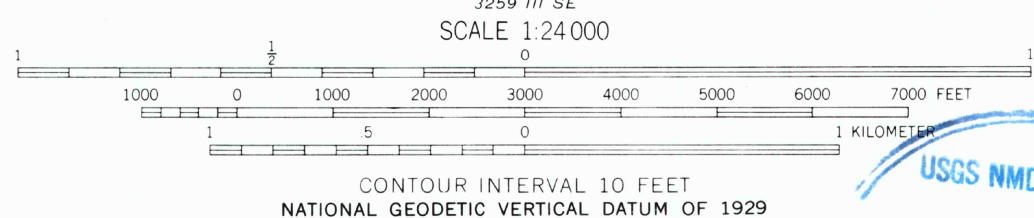
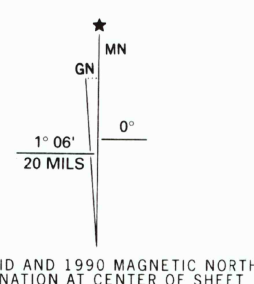
Topography by photogrammetric methods from aerial
photographs taken 1963. Field checked 1965

Polyconic projection. 1927 North American datum
10,000-foot grid based on Illinois coordinate system, east zone
1000-meter Universal Transverse Mercator grid ticks,
zone 16, shown in blue

Fine red dashed lines indicate selected fence and field lines where
generally visible on aerial photographs. This information is unchecked

To place on the predicted North American Datum 1983,
move the projection lines 3 meters south and
5 meters east as shown by dashed corner ticks

Contours in strip mine areas may not accurately
represent present topography



THIS MAP COMPLIES WITH NATIONAL MAP ACCURACY STANDARDS
FOR SALE BY U.S. GEOLOGICAL SURVEY, DENVER, COLORADO 80225, OR RESTON, VIRGINIA 22092
AND ILLINOIS GEOLOGICAL SURVEY, CHAMPAIGN, ILLINOIS 61820
A FOLDER DESCRIBING TOPOGRAPHIC MAPS AND SYMBOLS IS AVAILABLE ON REQUEST

ROAD CLASSIFICATION	
Heavy-duty	Light-duty
Medium-duty	Unimproved dirt
State Route	

CRAB ORCHARD, ILL.

37088F7-TF-024

1965
PHOTOREVISED 1990
DMA 3259 III NE - SERIES V863

Revisions shown in purple compiled in cooperation with
U.S. Forest Service from aerial photographs taken 1988 and other
sources. Partially field checked by U.S. Forest Service. Map edited 1990
Light purple tint indicates reclaimed strip mine areas