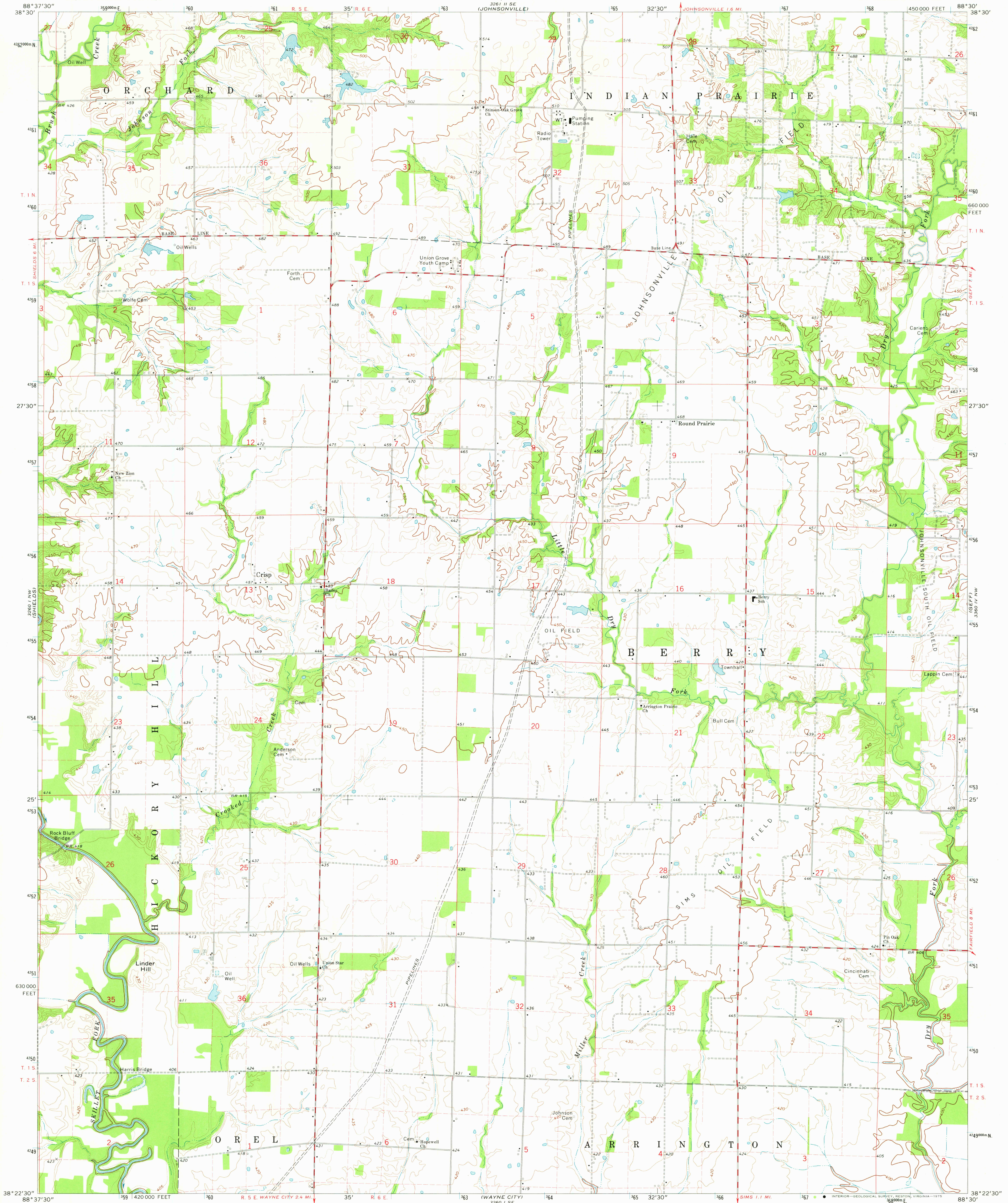


UNITED STATES
DEPARTMENT OF THE INTERIOR
GEOLOGICAL SURVEY

STATE OF ILLINOIS
DEPARTMENT OF REGISTRATION AND EDUCATION
GEOLOGICAL SURVEY DIVISION
URBANA, ILLINOIS

CRISP QUADRANGLE
ILLINOIS-WAYNE CO.
7.5 MINUTE SERIES (TOPOGRAPHIC)
NE 1/4 WAYNE CITY 15' QUADRANGLE



Mapped, edited, and published by the Geological Survey

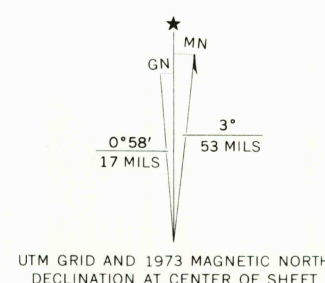
Control by USGS and NOS/NOAA

Topography by photogrammetric methods from aerial photographs taken 1972. Field checked 1973

Projection and 10,000-foot grid ticks: Illinois coordinate system, east zone (transverse Mercator)

1000-metre Universal Transverse Mercator grid ticks, zone 16, shown in blue. 1927 North American datum

Fine red dashed lines indicate selected fence and field lines where generally visible on aerial photographs. This information is unchecked



SCALE 1:24 000

1 000 0 1000 2000 3000 4000 5000 6000 7000 FEET

1 5 0 0 1 KILOMETRE

CONTOUR INTERVAL 10 FEET

DOTTED LINES REPRESENT 5-FOOT CONTOURS

NATIONAL GEODETIC VERTICAL DATUM OF 1929



QUADRANGLE LOCATION

ROAD CLASSIFICATION
Primary highway, hard surface
Secondary highway, hard surface
Interstate Route
U. S. Route
State Route
Light-duty road, hard or improved surface
Unimproved road

USGS
HISTORICAL FILE
TOPOGRAPHIC DIVISION

CRISP, ILL.
NE 1/4 WAYNE CITY 15' QUADRANGLE
N 3822.5-W 8830/7.5
1973
AMS 3260 I NE-SERIES V863

FEB 10 1976