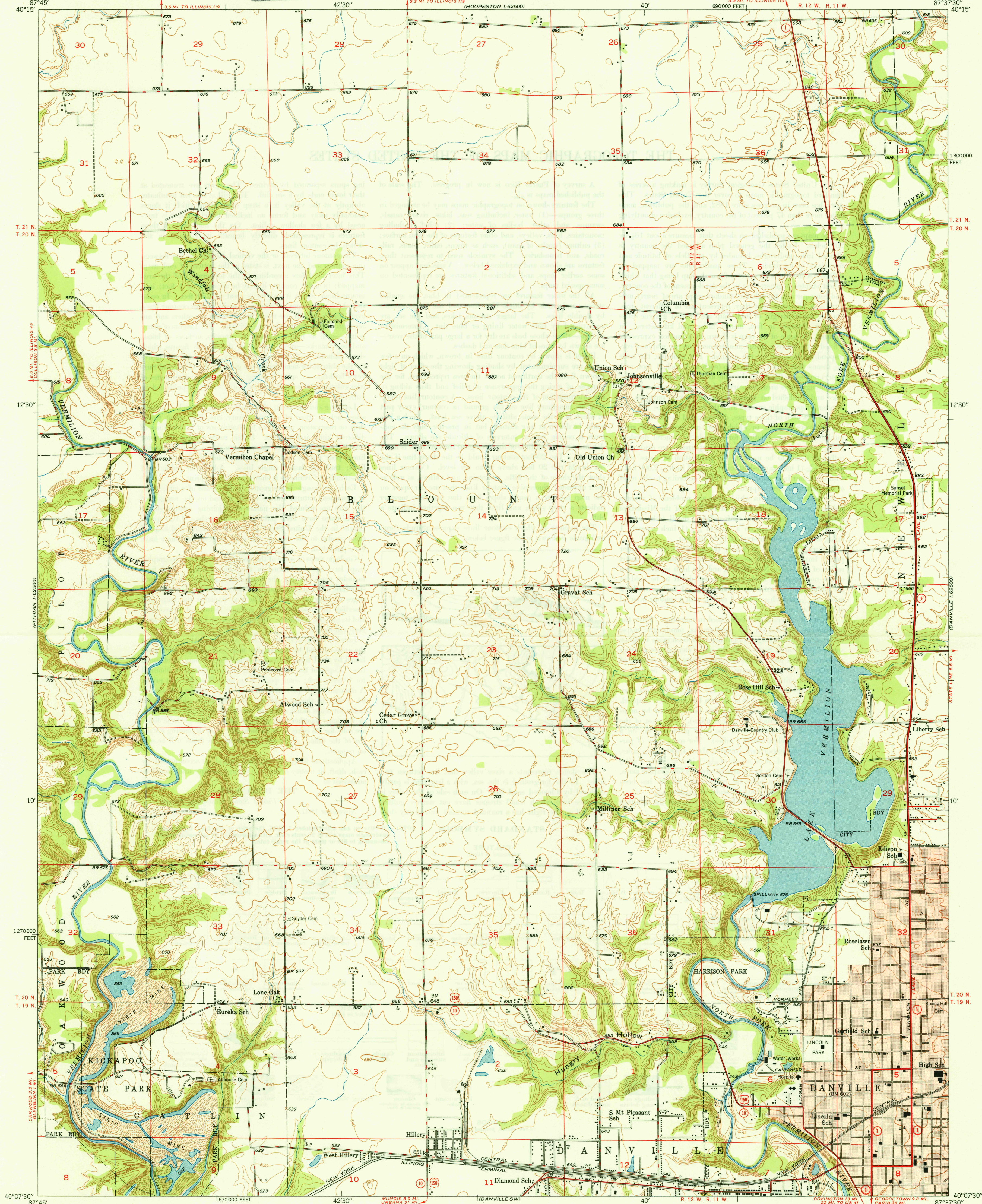


UNITED STATES
DEPARTMENT OF THE INTERIOR
GEOLOGICAL SURVEY

U. S. G. S.
FILE COPY
Inspection and Editing.

ADLAI E. STEVENSON, GOVERNOR
DEPARTMENT OF REGISTRATION AND EDUCATION
NOBLE J. PUFFER, DIRECTOR
GEOLOGICAL SURVEY DIVISION, M. M. LEIGHTON, CHIEF
URBANA, ILLINOIS

DANVILLE NW QUADRANGLE
ILLINOIS-VERMILION CO.
7.5 MINUTE SERIES (TOPOGRAPHIC)
NW/4 DANVILLE 15' QUADRANGLE

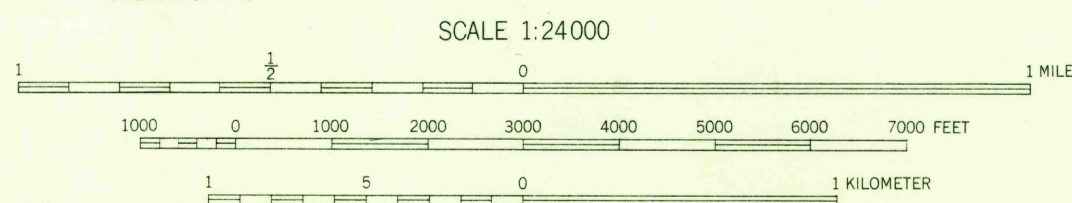


Mapped, edited, and published by the Geological Survey
Control by USGS and USC&GS
Topography by multiplex methods from aerial photographs
taken 1945, and by plane-table surveys 1948
Field check 1948

Polyconic projection. 1927 North American datum
10,000-foot grid based on Illinois coordinate system,
east zone

Red tint indicates area in which only
landmark buildings are shown

APPROXIMATE MEAN
DECLINATION, 1948



CONTOUR INTERVAL 10 FEET
DOTTED LINES REPRESENT HALF-INTERVAL CONTOURS
DATUM IS MEAN SEA LEVEL

THIS MAP COMPLIES WITH NATIONAL MAP ACCURACY STANDARDS
FOR SALE BY U. S. GEOLOGICAL SURVEY, WASHINGTON 25, D. C.
AND BY THE STATE GEOLOGICAL SURVEY, URBANA, ILLINOIS

USGS
Historical File
Topographic Division

U. S. G. S.
FILE COPY
Inspection and Editing.

ROAD CLASSIFICATION
HARD-SURFACE ALL WEATHER ROADS DRY WEATHER ROADS
Heavy-duty ——— 4 LANE 10 LANE Improved dirt ———
Medium-duty ——— 4 LANE 10 LANE Unimproved dirt ———
Loose-surface, graded, or narrow hard-surface ———
U. S. Route State Route

DANVILLE NW, ILL.
NW/4 DANVILLE 15' QUADRANGLE
N4007.5-W8737.5/7.5

EDITION OF 1950

(3230)
6/27/50