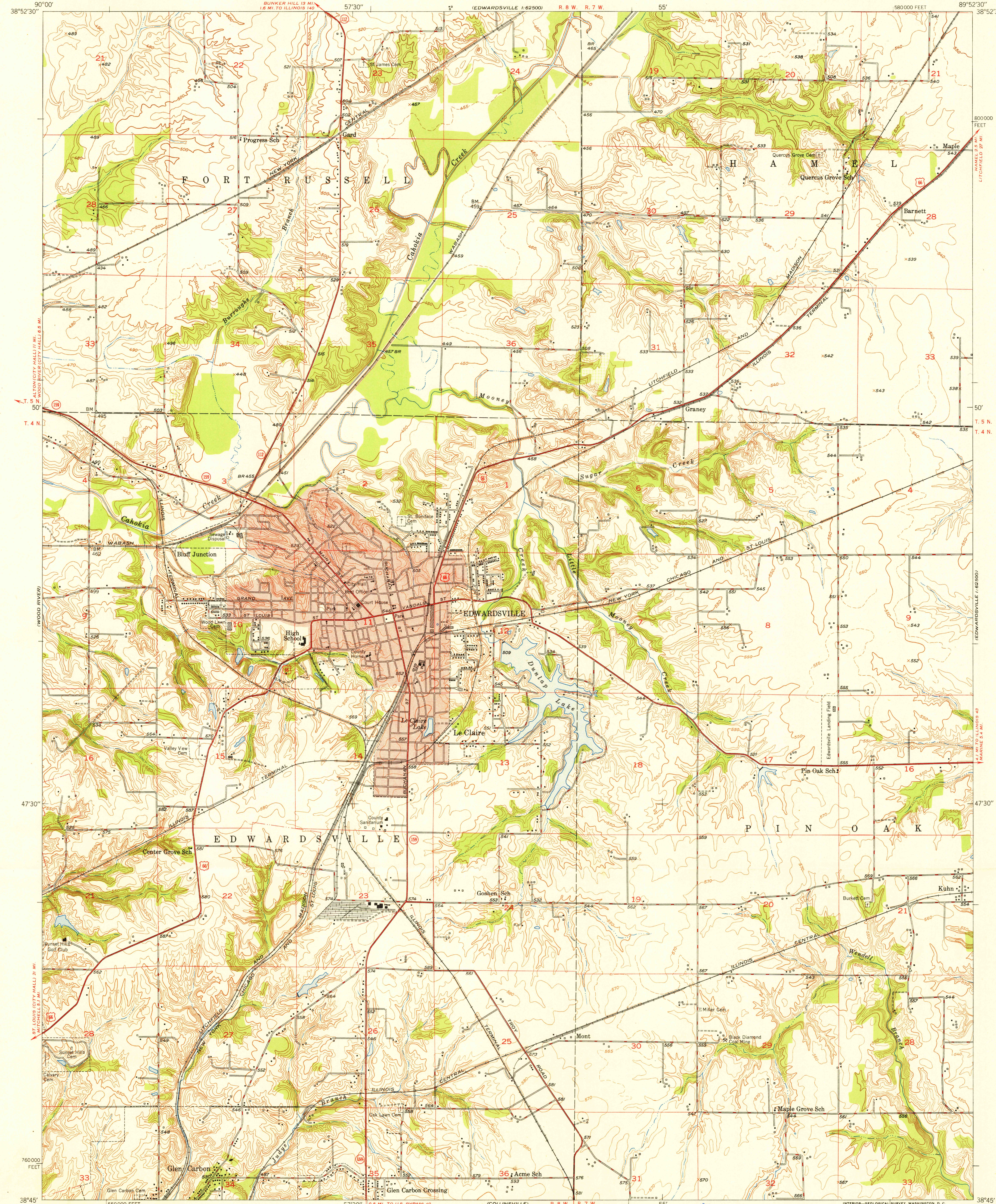


UNITED STATES
DEPARTMENT OF THE INTERIOR
GEOLOGICAL SURVEY

U. S. G. S.
FILE COPY
Inspection and Editing

STATE OF ILLINOIS
ADLAI E. STEVENSON, GOVERNOR
DEPARTMENT OF REGISTRATION AND EDUCATION
NOBLE J. PUFFER, DIRECTOR
GEOLOGICAL SURVEY DIVISION, M. M. LEIGHTON, CHIEF
URBANA, ILLINOIS

EDWARDSVILLE QUADRANGLE
ILLINOIS-MADISON CO.
7.5 MINUTE SERIES (TOPOGRAPHIC)
SW 1/4 EDWARDSVILLE 15' QUADRANGLE



Mapped, edited, and published by the Geological Survey
Control by USGS and USC&GS
Topography by multiplex methods from aerial photographs
taken 1945, and by plane-table surveys 1948
Field check 1948
Polyconic projection. 1927 North American datum
10,000-foot grid based on Illinois coordinate system,
west zone
Red tint indicates area in which only
landmark buildings are shown

TRUE NORTH
MAGNETIC NORTH
APPROXIMATE MEAN
DECLINATION, 1948

SCALE 1:24,000
1 0 1000 2000 3000 4000 5000 6000 7000 FEET
1 0 1 2 3 4 5 KILOMETER
CONTOUR INTERVAL 10 FEET
DASHED LINES REPRESENT HALF-INTERVAL CONTOURS
DATUM IS MEAN SEA LEVEL

THIS MAP COMPLIES WITH NATIONAL MAP ACCURACY STANDARDS
FOR SALE BY U. S. GEOLOGICAL SURVEY, WASHINGTON 25, D. C.
AND BY THE STATE GEOLOGICAL SURVEY, URBANA, ILLINOIS
A FOLDER DESCRIBING TOPOGRAPHIC MAPS AND SYMBOLS IS AVAILABLE ON REQUEST

USGS
Historical File
Topographic Division

U. S. G. S.
FILE COPY
Inspection and Editing

ROAD CLASSIFICATION
HARD-SURFACE ALL WEATHER ROADS DRY WEATHER ROADS
Heavy-duty ———— 2 LANE 16 LANE Improved dirt ————
Medium-duty ———— 2 LANE 16 LANE Unimproved dirt ————
Loose-surface, graded, or narrow hard-surface ————
U. S. Route ———— State Route ————

EDWARDSVILLE, ILL.
SW 1/4 EDWARDSVILLE 15' QUADRANGLE
N3845-W8952.5/7.5

EDITION OF 1950

DEC 26 1950