

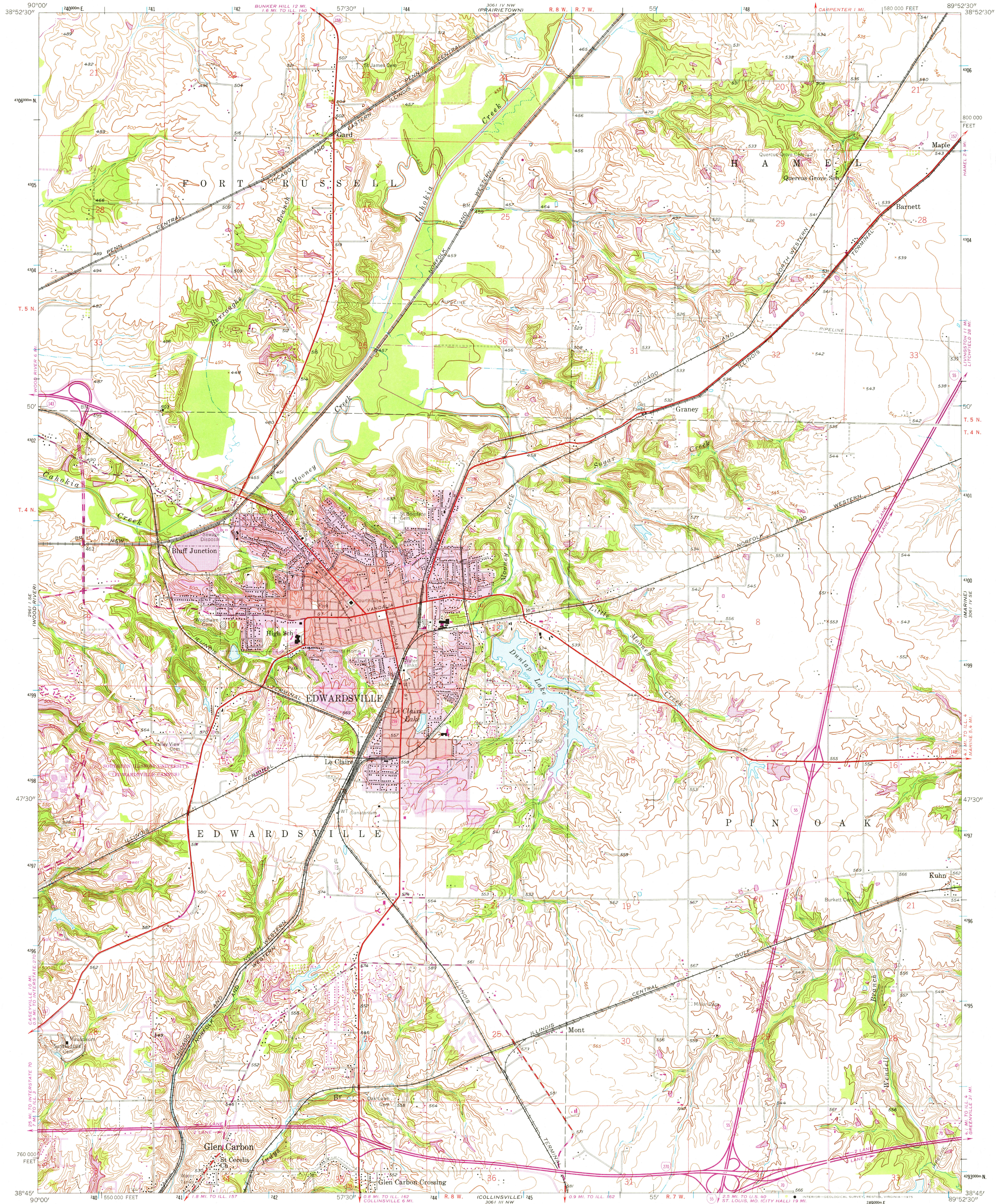
2 1/2 MI. TO
BETHLEHEM

UNITED STATES
DEPARTMENT OF THE INTERIOR
GEOLOGICAL SURVEY

STATE OF ILLINOIS
DEPARTMENT OF REGISTRATION AND EDUCATION
GEOLOGICAL SURVEY DIVISION

EDWARDSVILLE QUADRANGLE
ILLINOIS—MADISON CO.
7.5 MINUTE SERIES (TOPOGRAPHIC)
SW 1/4 EDWARDSVILLE 15' QUADRANGLE

3 1/2 MI. TO
WILSON



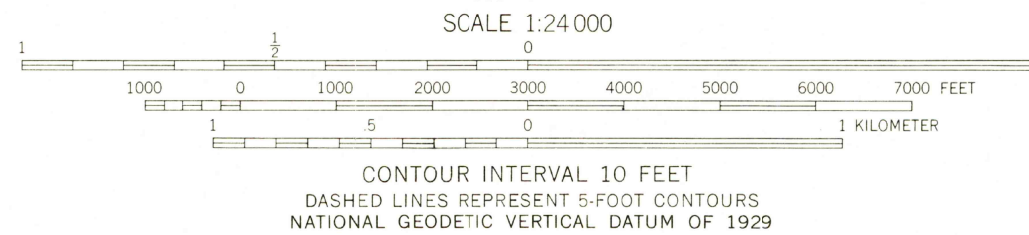
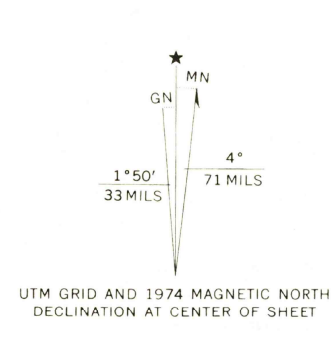
MONKS MOUND
2 1/2 MI. TO N.E.

Mapped by the Geological Survey
Revised by the Army Map Service
Published for civil use by the Geological Survey
Control by USGS and USC&GS

Topography by photogrammetric methods from aerial
photographs and planimetric surveys 1948. Planimetry revised
from aerial photographs taken 1952. Field checked 1953-54

Polyconic projection. 1927 North American datum
10,000-foot grid based on Illinois coordinate system, west zone
1000-meter Universal Transverse Mercator grid ticks,
zone 16, shown in blue

Red tint indicates area in which only landmark buildings are shown



THIS MAP COMPLIES WITH NATIONAL MAP ACCURACY STANDARDS
FOR SALE BY U. S. GEOLOGICAL SURVEY, RESTON, VIRGINIA 22092
AND BY THE STATE GEOLOGICAL SURVEY, URBANA, ILLINOIS 61801
A FOLDER DESCRIBING TOPOGRAPHIC MAPS AND SYMBOLS IS AVAILABLE ON REQUEST

ROAD CLASSIFICATION

Heavy-duty	Light-duty
Medium-duty	Unimproved dirt
Interstate Route	U. S. Route
	State Route

USGS
HISTORICAL FILE
TOPOGRAPHIC DIVISION

EDWARDSVILLE, ILL.
SW 1/4 EDWARDSVILLE 15' QUADRANGLE
N3845—W8952.5/7.5

1954
PHOTOREVISED 1968 AND 1974
AMS 3061 IV SW—SERIES V863

NOV 19 1975