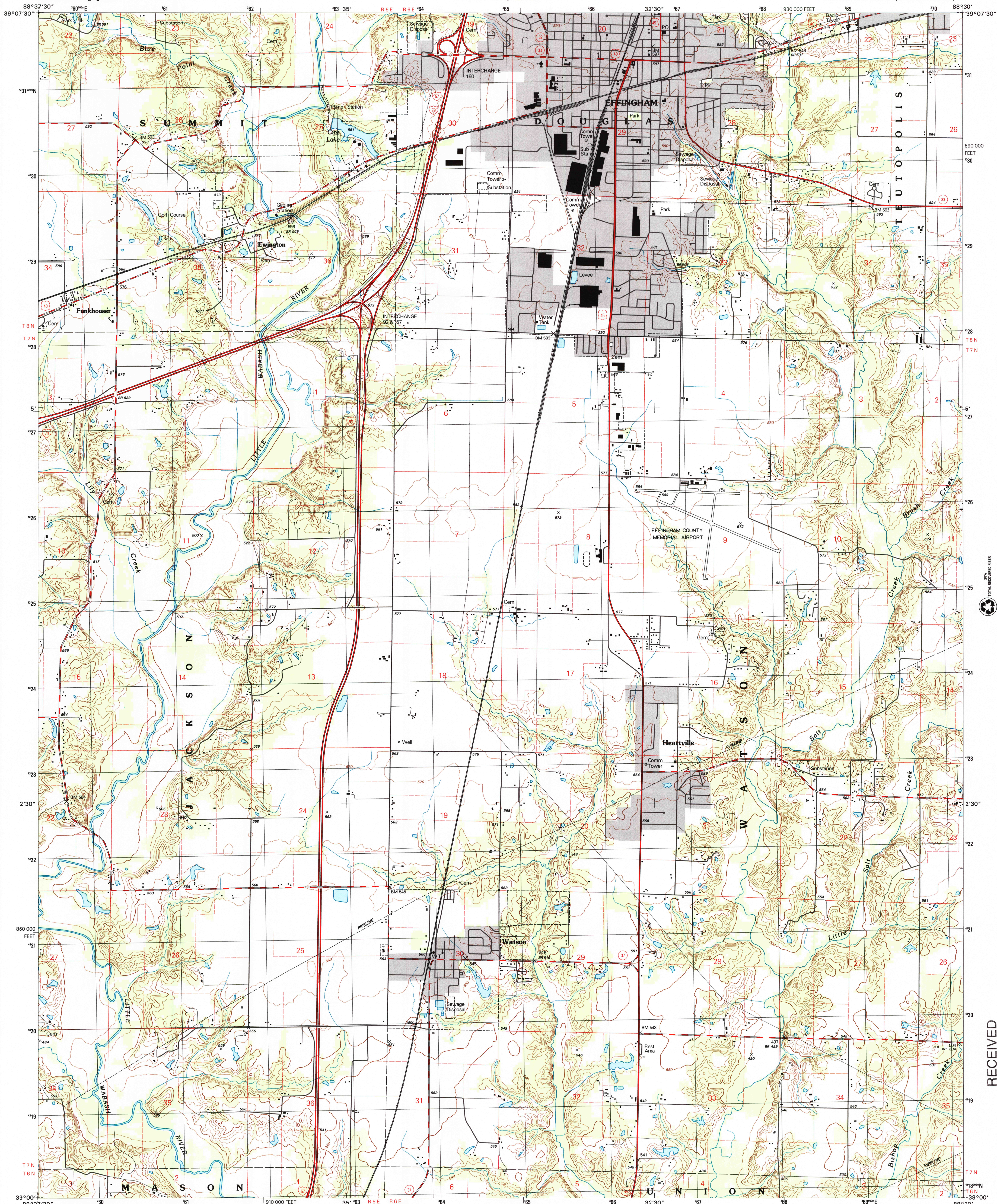




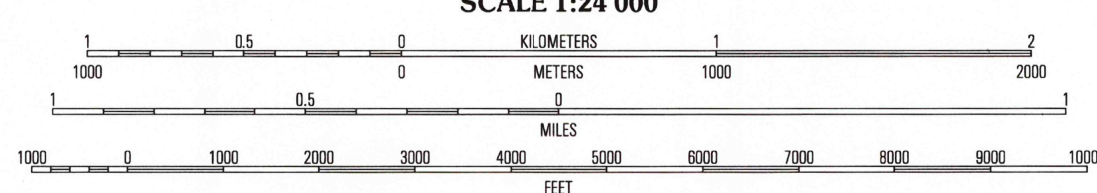
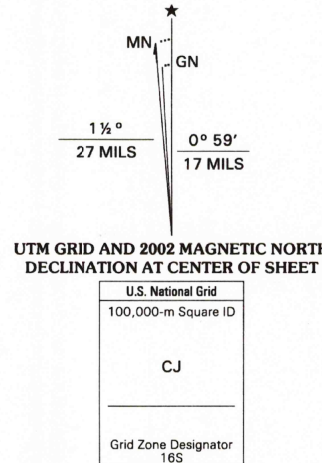
U.S. DEPARTMENT OF THE INTERIOR
U.S. GEOLOGICAL SURVEY

STATE OF ILLINOIS
DEPARTMENT OF TRANSPORTATION
DEPARTMENT OF NATURAL RESOURCES
SPRINGFIELD, ILLINOIS

EFFINGHAM SOUTH QUADRANGLE
ILLINOIS-EFFINGHAM CO.
7.5-MINUTE SERIES (TOPOGRAPHIC)



Produced by the United States Geological Survey
Contours.....National Elevation Dataset, 1981
Roads.....Illinois Department of Transportation, 2001
Other Planimetry.....1998
Public Land Survey System and Survey Control.....1983
Boundaries.....2002
Woodland.....LANDSAT 7, 2001
Houses of Worship, Schools, and Other Labeled Buildings.....1983
North American Datum of 1983 (NAD 83). Projection is
1000-meter grid: Universal Transverse Mercator, zone 16S
10 000-foot ticks: Illinois Coordinate System of 1983 (east zone)
North American Datum of 1927 (NAD 27) is shown by dashed
corner ticks. The values of the shift between NAD 83 and
NAD 27 for 7.5-minute intersections are obtainable from
National Geodetic Survey NADCON software



CONTOUR INTERVAL 10 FEET
NORTH AMERICAN VERTICAL DATUM OF 1988
TO CONVERT FROM FEET TO METERS, MULTIPLY BY 0.3048

THIS MAP COMPLIES WITH NATIONAL MAP ACCURACY STANDARDS
FOR SALE BY U.S. GEOLOGICAL SURVEY, P.O. BOX 25286, DENVER, COLORADO 80225
AND ILLINOIS GEOLOGICAL SURVEY, CHAMPAIGN, ILLINOIS 61820
A FOLDER DESCRIBING TOPOGRAPHIC MAPS AND SYMBOLS IS AVAILABLE ON REQUEST



QUADRANGLE LOCATION

1	2	3
4	5	6
7	8	9

1 Shumway
2 Effingham North
3 Tiptonville
4 Alton East
5 Dieterich
6 Edgewood
7 Ford
8 Eberle

ROAD CLASSIFICATION
Primary highway
hard surface
Secondary highway
hard surface
Light-duty road, hard or
improved surface
Unimproved road
Interstate Route
U.S. Route
State Route

EFFINGHAM SOUTH, IL
1998

NIMA 3262 II SE-SERIES V863



20% TOTAL RECOVERED FIBER

RECEIVED

2002

USGS NMD
HISTORICAL MAP ARCHIVES



ISBN 0-607-96712-X
9 780607 967120