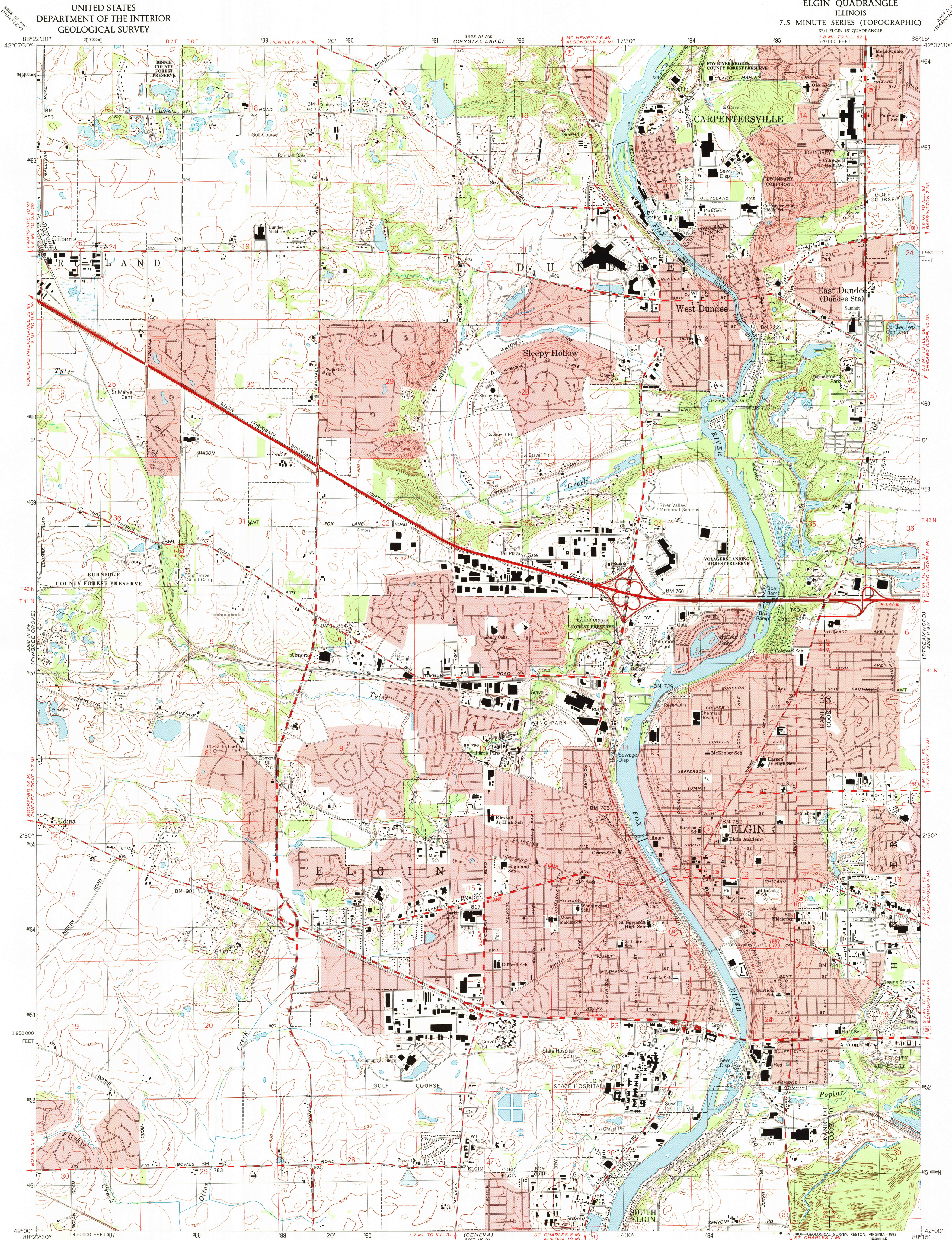


UNITED STATES
DEPARTMENT OF THE INTERIOR
GEOLOGICAL SURVEY

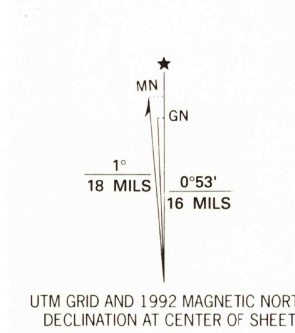
ELGIN QUADRANGLE
ILLINOIS
7.5 MINUTE SERIES (TOPOGRAPHIC)

SE/4 ELGIN 15' QUADRANGLE

1.8 MI. TO ILL. 62
670 000 FEET



Produced by the United States Geological Survey
Control by USGS and NOS/NOAA
Topography by photogrammetric methods from aerial photographs
taken 1958. Field checked 1962. Revised from aerial photographs
taken 1988. Field checked 1991. Map edited 1992
Projection and 10,000-foot grid ticks: Illinois coordinate
system, east zone (transverse Mercator)
1000-meter Universal Transverse Mercator grid, zone 16
1927 North American Datum
The difference between 1927 North American Datum and North
American Datum of 1983 (NAD 83) for 7.5-minute intersections
is given in USGS Bulletin 1875. The NAD 83 is shown by
dashed corner ticks
There may be private inholdings within the boundaries of
the National or State reservations shown on this map
Red tint indicates areas in which only landmark buildings are shown
Fine red dashed lines indicate selected fence and field lines where
generally visible on aerial photographs. This information is unchecked



SCALE 1:24 000
CONTOUR INTERVAL 10 FEET
NATIONAL GEODETIC VERTICAL DATUM OF 1929

COMPLIES WITH U. S. GEOLOGICAL SURVEY STANDARDS FOR SPATIAL ACCURACY-CLASS 2
FOR SALE BY U. S. GEOLOGICAL SURVEY
DENVER, COLORADO 80225, OR RESTON, VIRGINIA 22092
AND ILLINOIS GEOLOGICAL SURVEY, CHAMPAIGN, ILLINOIS 61820
A FOLDER DESCRIBING TOPOGRAPHIC MAPS AND SYMBOLS IS AVAILABLE ON REQUEST

ROAD CLASSIFICATION

Primary highway, hard surface	Light-duty road, hard or improved surface
Secondary highway, hard surface	Unimproved road

○ Interstate Route ○ U. S. Route ○ State Route

ILLINOIS
QUADRANGLE LOCATION

USGS 1992 HISTORICAL
MAP ARCHIVES
APR 25 1993
REC'D FILE COPY

ELGIN, ILL.
SE/4 ELGIN 15' QUADRANGLE
42088-A3-TF-024
1992
DMA 3368 III SE - SERIES V863