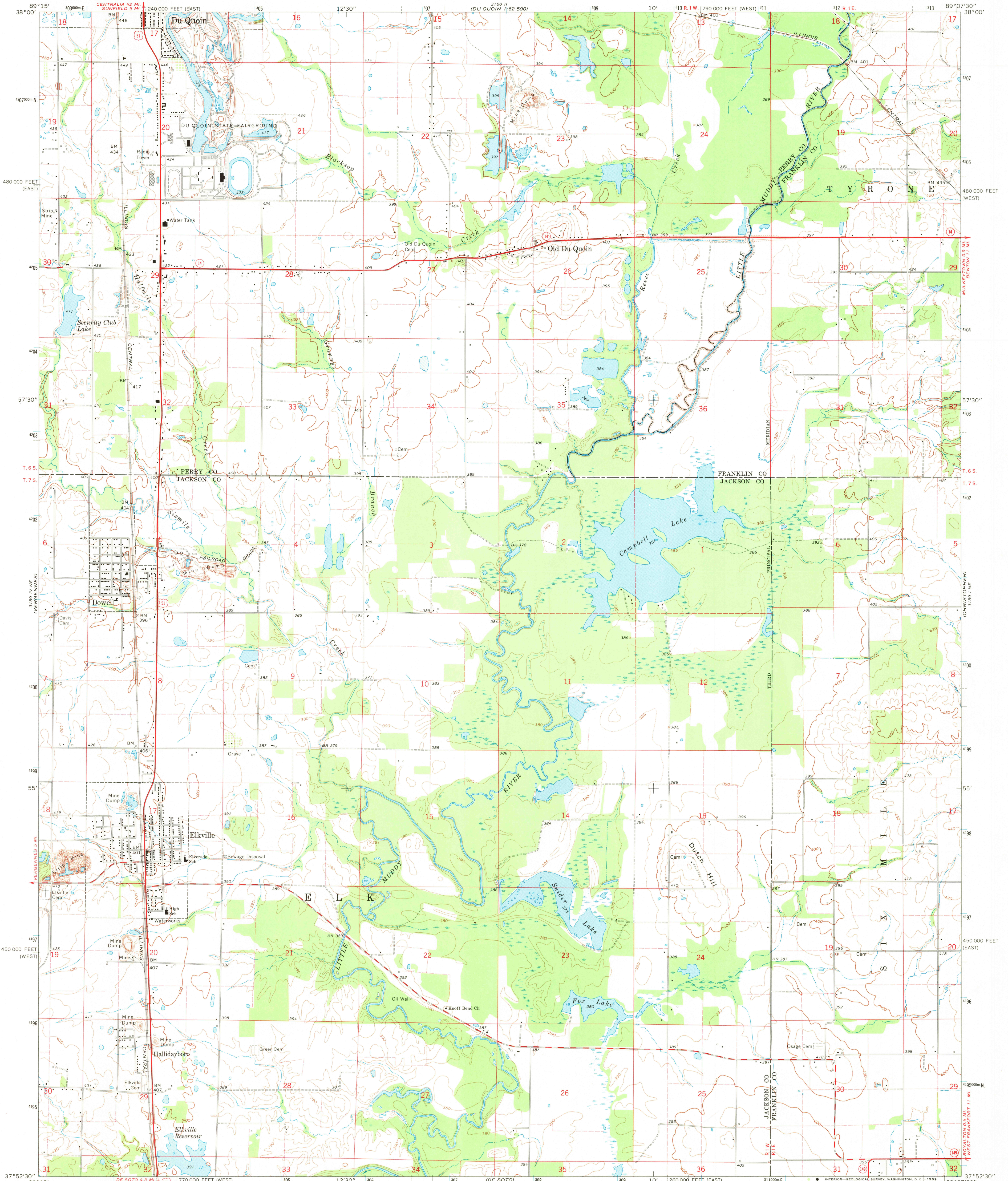


UNITED STATES
DEPARTMENT OF THE INTERIOR
GEOLOGICAL SURVEY

ELKVILLE QUADRANGLE
ILLINOIS
7.5 MINUTE SERIES (TOPOGRAPHIC)
NW/4 HERRIN 15' QUADRANGLE



Mapped, edited, and published by the Geological Survey

Control by USGS and USC&GS

Topography by photogrammetric methods from aerial photographs taken 1965. Field checked 1968

Soundings compiled from charts furnished by Illinois Department of Conservation

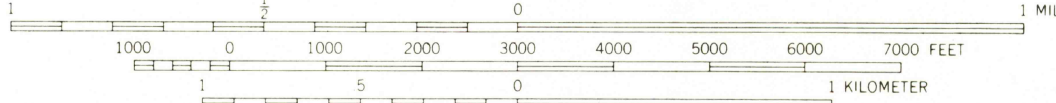
Polyconic projection. 1927 North American datum

10,000-foot grids based on Illinois coordinate system, west and east zones

1000-meter Universal Transverse Mercator grid ticks, zone 16, shown in blue

Fine red dashed lines indicate selected fence and field lines where generally visible on aerial photographs. This information is unchecked

SCALE 1:24,000



CONTOUR INTERVAL 10 FEET
DOTTED LINES REPRESENT 5-FOOT CONTOURS
DATUM IS MEAN SEA LEVEL

USGS
Historical File
Topographic Division



QUADRANGLE LOCATION

ROAD CLASSIFICATION	
Heavy-duty	Light-duty
Medium-duty	Unimproved dirt
U.S. Route	State Route

U.S.G.S.
FILE COPY
TOPOGRAPHIC DIVISION

ELKVILLE, ILL.
NW/4 HERRIN 15' QUADRANGLE
N3752.5-W8907.5/7.5
1968

AMS 3159 1 NW-SERIES V863