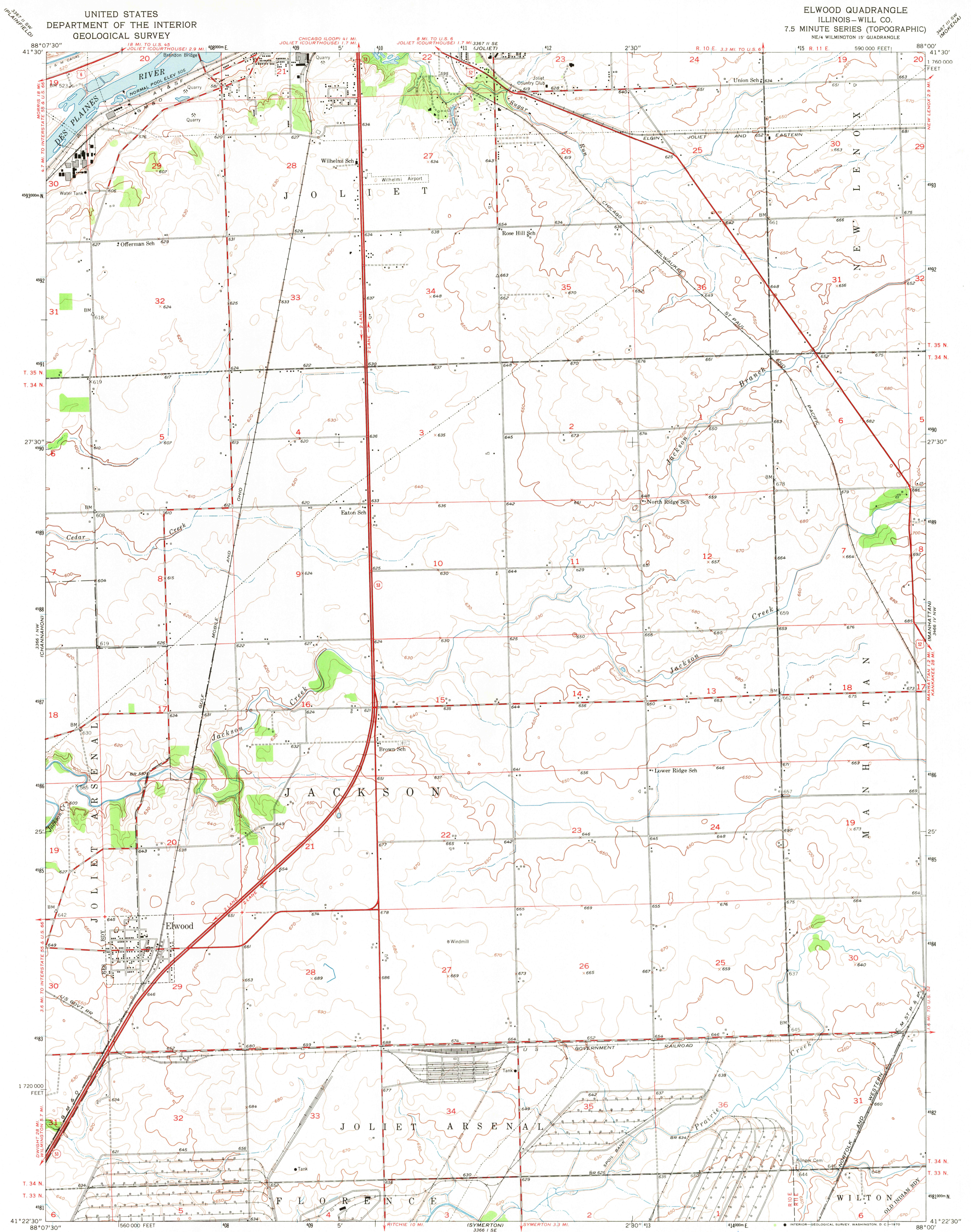
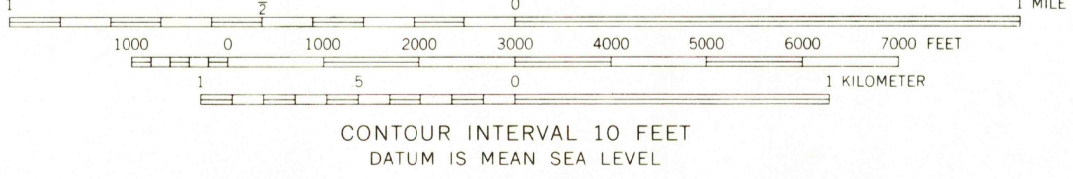
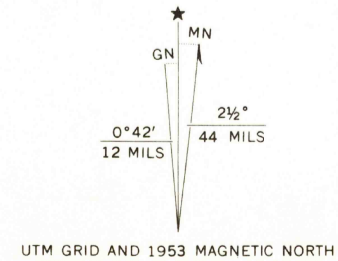


UNITED STATES  
DEPARTMENT OF THE INTERIOR  
GEOLOGICAL SURVEY

ELWOOD QUADRANGLE  
ILLINOIS—WILL. CO.  
7.5 MINUTE SERIES (TOPOGRAPHIC)  
NE 1/4 WILMINGTON 15' QUADRANGLE



Mapped, edited, and published by the Geological Survey  
Control by USGS and USC&GS  
Culture and drainage in part compiled from aerial photographs  
taken 1952. Topography by planetable surveys 1953  
Polyconic projection. 1927 North American datum  
10,000-foot grid based on Illinois coordinate system, east zone  
1000-meter Universal Transverse Mercator grid ticks,  
zone 16, shown in blue



USGS  
Historical File  
Topographic Division



ROAD CLASSIFICATION

Heavy-duty	Light-duty
Medium-duty	Unimproved dirt
U.S. Route	State Route

U.S.G.S.  
FILE COPY  
TOPOGRAPHIC DIVISION

ELWOOD, ILL.  
NE 1/4 WILMINGTON 15' QUADRANGLE  
N4122.5—W8800/7.5  
1953  
AMS 3366 I NE—SERIES V863

THIS MAP COMPLIES WITH NATIONAL MAP ACCURACY STANDARDS  
FOR SALE BY U.S. GEOLOGICAL SURVEY, WASHINGTON, D. C. 20242  
AND BY THE STATE GEOLOGICAL SURVEY, URBANA, ILLINOIS 61801  
A FOLDER DESCRIBING TOPOGRAPHIC MAPS AND SYMBOLS IS AVAILABLE ON REQUEST

2005  
AUG 28 1970