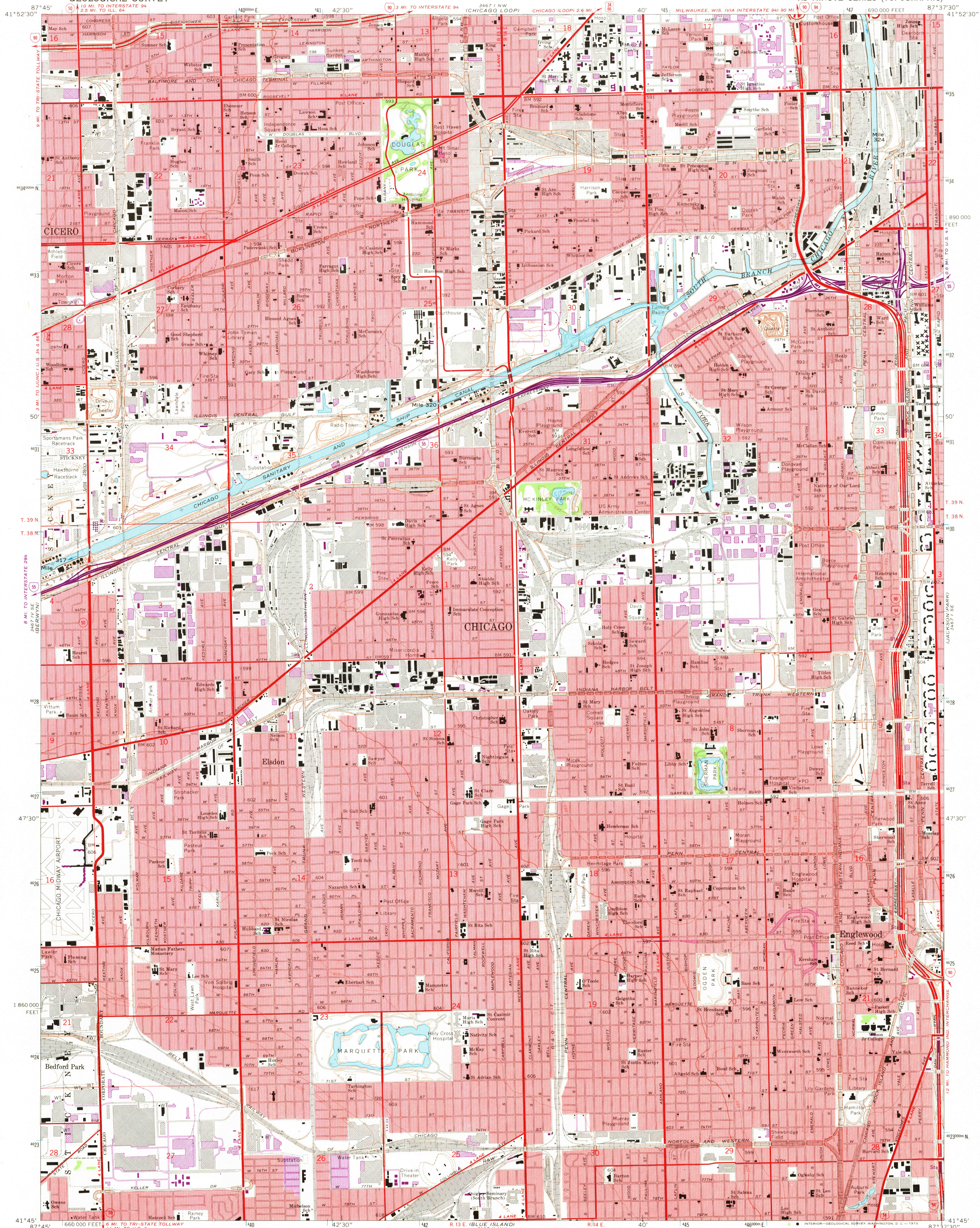


UNITED STATES
DEPARTMENT OF THE INTERIOR
GEOLOGICAL SURVEY

ENGLEWOOD QUADRANGLE
ILLINOIS—COOK CO.
7.5 MINUTE SERIES (TOPOGRAPHIC)



Maped, edited, and published by the Geological Survey
in cooperation with State of Illinois Geological Survey
Control by USGS, USC&GS, and City of Chicago
Planimetry by photogrammetric methods from aerial photographs
taken 1962-63. Topography by planetable surveys 1926. Revised 1963
Selected hydrographic data compiled from U.S. Lake Survey
Chart 752 (1963)
This information is not intended for navigational purposes
Polyconic projection. 1927 North American datum
10,000-foot grid based on Illinois coordinate system, east zone
1000-meter Universal Transverse Mercator grid ticks,
zone 16, shown in blue
Red tint indicates areas in which only landmark buildings are shown

SCALE 1:240,000
CONTOUR INTERVAL 5 FEET
DATUM IS MEAN SEA LEVEL
DEPTH CURVES AND SOUNDINGS IN FEET—DATUM IS LOW WATER 578.5 FEET
THIS MAP COMPLIES WITH NATIONAL MAP ACCURACY STANDARDS
FOR SALE BY U.S. GEOLOGICAL SURVEY, WASHINGTON, D.C. 20542
AND BY THE STATE GEOLOGICAL SURVEY, URBANA, ILLINOIS 61801
A FOLDER DESCRIBING TOPOGRAPHIC MAPS AND SYMBOLS IS AVAILABLE ON REQUEST

ROAD CLASSIFICATION
Heavy-duty ——— Light-duty ———
Unimproved dirt ———
Interstate Route ——— U.S. Route ——— State Route ———
JUL 30 1973
ENGLEWOOD, ILL.
N4145—W8737.5/7.5
1963
PHOTOREVISED 1972
AMS 3467 1 SW—SERIES V863