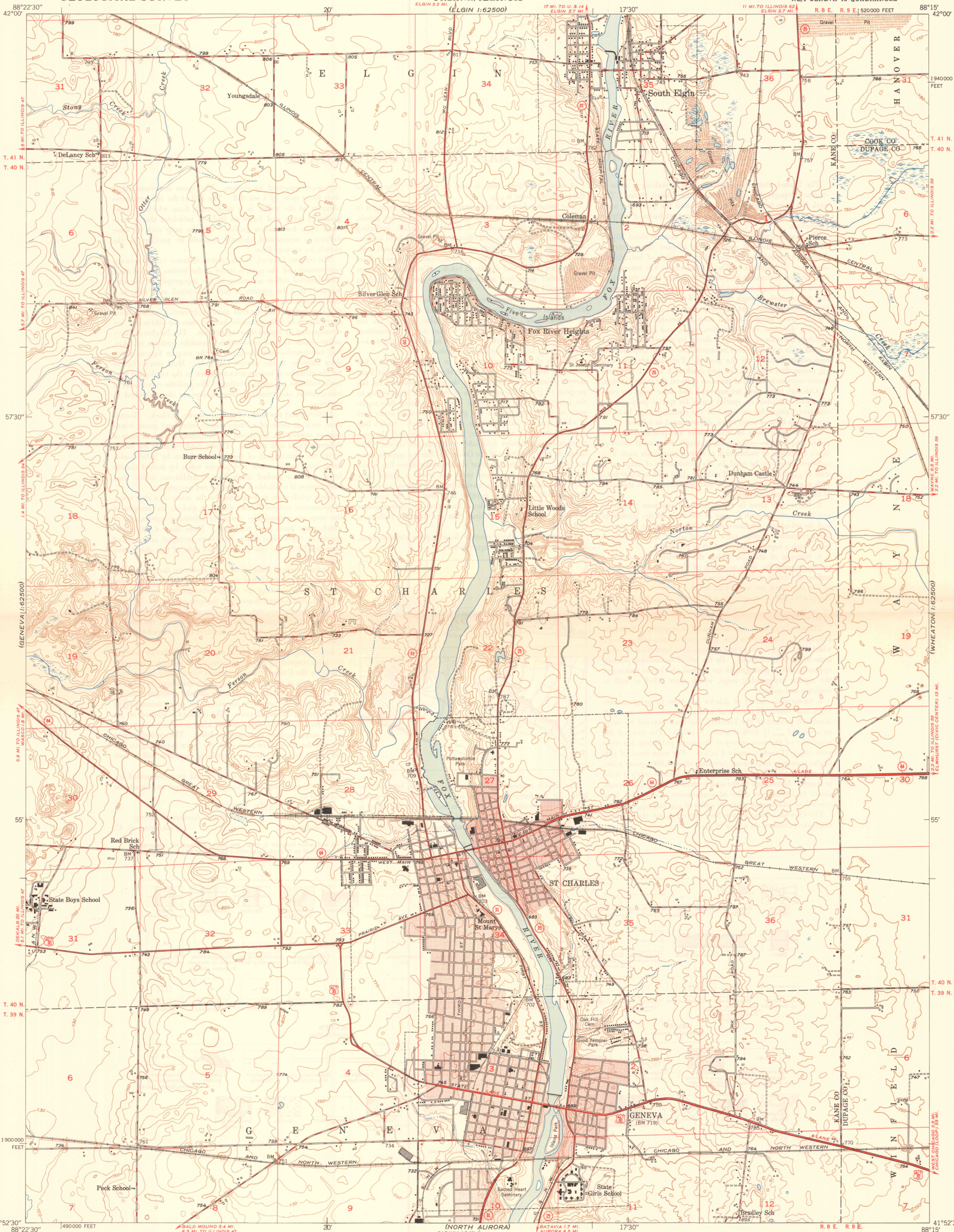


UNITED STATES  
DEPARTMENT OF THE INTERIOR  
GEOLOGICAL SURVEY

STATE OF ILLINOIS  
ADLAI E. STEVENSON, GOVERNOR  
DEPARTMENT OF REGISTRATION AND EDUCATION  
NOBLE J. PUFFER, DIRECTOR  
GEOLOGICAL SURVEY DIVISION, M. M. LEIGHTON, CHIEF  
URBANA, ILLINOIS

GENEVA QUADRANGLE  
ILLINOIS  
7.5 MINUTE SERIES (TOPOGRAPHIC)  
NE/4 GENEVA 15' QUADRANGLE



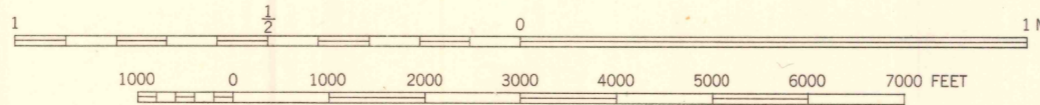
Mapped, edited, and published by the Geological Survey

Control by USGS and USC&GS

Culture and drainage in part compiled from  
aerial photographs taken 1946  
Topography by plane-table methods 1947-1948

Polyconic projection. 1927 North American datum  
10,000-foot grid based on Illinois coordinate system,  
east zone

Red tint indicates areas in which only  
landmark buildings are shown



CONTOUR INTERVAL 10 FEET  
DATUM IS MEAN SEA LEVEL

ROAD CLASSIFICATION

HARD-SURFACE ALL WEATHER ROADS	DRY WEATHER ROADS
Heavy-duty <b>4 LANE 16 LANE</b>	Improved dirt <b>---</b>
Medium-duty <b>2 LANE 16 LANE</b>	Unimproved dirt <b>-----</b>
Loose-surface, graded, or narrow hard-surface <b>---</b>	
U. S. Route <b>⊕</b>	State Route <b>⊙</b>

GENEVA, ILL.  
NE/4 GENEVA 15' QUADRANGLE  
N4152.5-W8815/7.5

EDITION OF 1949

THIS MAP COMPLIES WITH NATIONAL MAP ACCURACY STANDARDS  
FOR SALE BY U. S. GEOLOGICAL SURVEY, WASHINGTON 25, D. C.  
AND BY THE STATE GEOLOGICAL SURVEY, URBANA, ILLINOIS

(ELGIN 1:62500)  
(GENEVA 1:62500)  
(DEKALB 20 MI. TO ILLINOIS 47)  
(JEFFERSON 18 MI. TO ILLINOIS 47)  
(WASCO 18 MI. TO ILLINOIS 47)  
(DEKALB 20 MI. TO ILLINOIS 47)  
(JEFFERSON 18 MI. TO ILLINOIS 47)  
(WASCO 18 MI. TO ILLINOIS 47)  
(GENEVA 1:62500)

(BARRINGTON) 1:62500  
(WHEATON) 1:62500  
(WHEATON) 1:62500  
(WHEATON) 1:62500

TRUE NORTH  
MAGNETIC NORTH  
APPROXIMATE MEAN DECLINATION, 1948