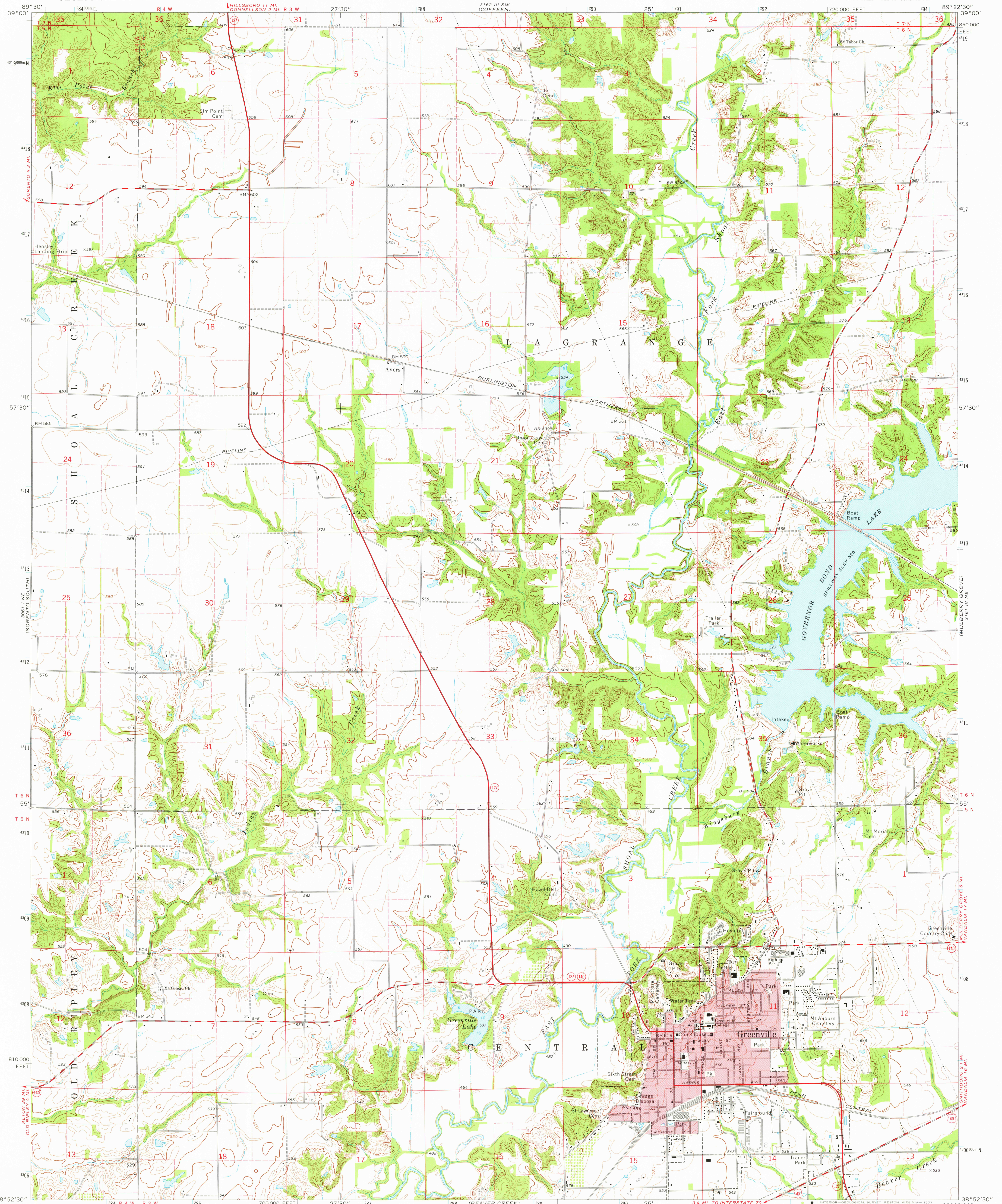


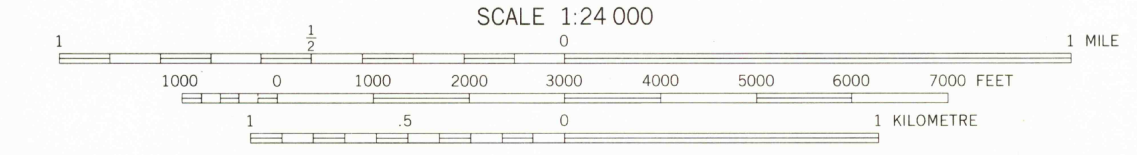
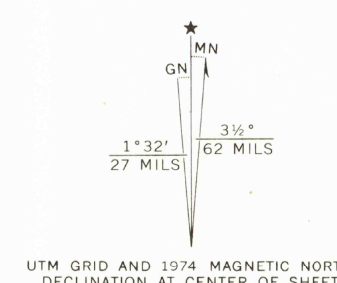
UNITED STATES  
DEPARTMENT OF THE INTERIOR  
GEOLOGICAL SURVEY

GREENVILLE QUADRANGLE  
ILLINOIS—BOND CO.  
7.5 MINUTE SERIES (TOPOGRAPHIC)  
NW/4 GREENVILLE 15' QUADRANGLE



Map, edited, and published by the Geological Survey

Control by USGS and NOS/NOAA  
Topography by photogrammetric methods from aerial photographs taken 1973. Field checked 1974  
Hydrography compiled from information furnished by Illinois Department of Conservation  
Projection and 10,000-foot grid ticks: Illinois coordinate system, west zone (transverse Mercator)  
1000-metre Universal Transverse Mercator grid ticks, zone 16, shown in blue. 1927 North American datum  
Red tint indicates area in which only landmark buildings are shown  
Fine red dashed lines indicate selected fence and field lines where generally visible on aerial photographs. This information is unchecked



CONTOUR INTERVAL 10 FEET  
DOTTED LINES REPRESENT 5-FOOT CONTOURS  
NATIONAL GEODETIC VERTICAL DATUM OF 1929

THIS MAP COMPLIES WITH NATIONAL MAP ACCURACY STANDARDS FOR SALE BY U. S. GEOLOGICAL SURVEY, RESTON, VIRGINIA 22092 AND BY THE STATE GEOLOGICAL SURVEY, URBANA, ILLINOIS 61801  
A FOLDER DESCRIBING TOPOGRAPHIC MAPS AND SYMBOLS IS AVAILABLE ON REQUEST



ROAD CLASSIFICATION  
Primary highway, hard surface  
Secondary highway, hard surface  
Light-duty road, hard or improved surface  
Unimproved road  
Interstate Route  
U. S. Route  
State Route

USGS  
Historical File  
Topographic Division

GREENVILLE, ILL.  
NW/4 GREENVILLE 15' QUADRANGLE  
N3852.5—W8922.5/7.5  
1974

AMS 3161 IV NW—SERIES V865

MAY 23 1977