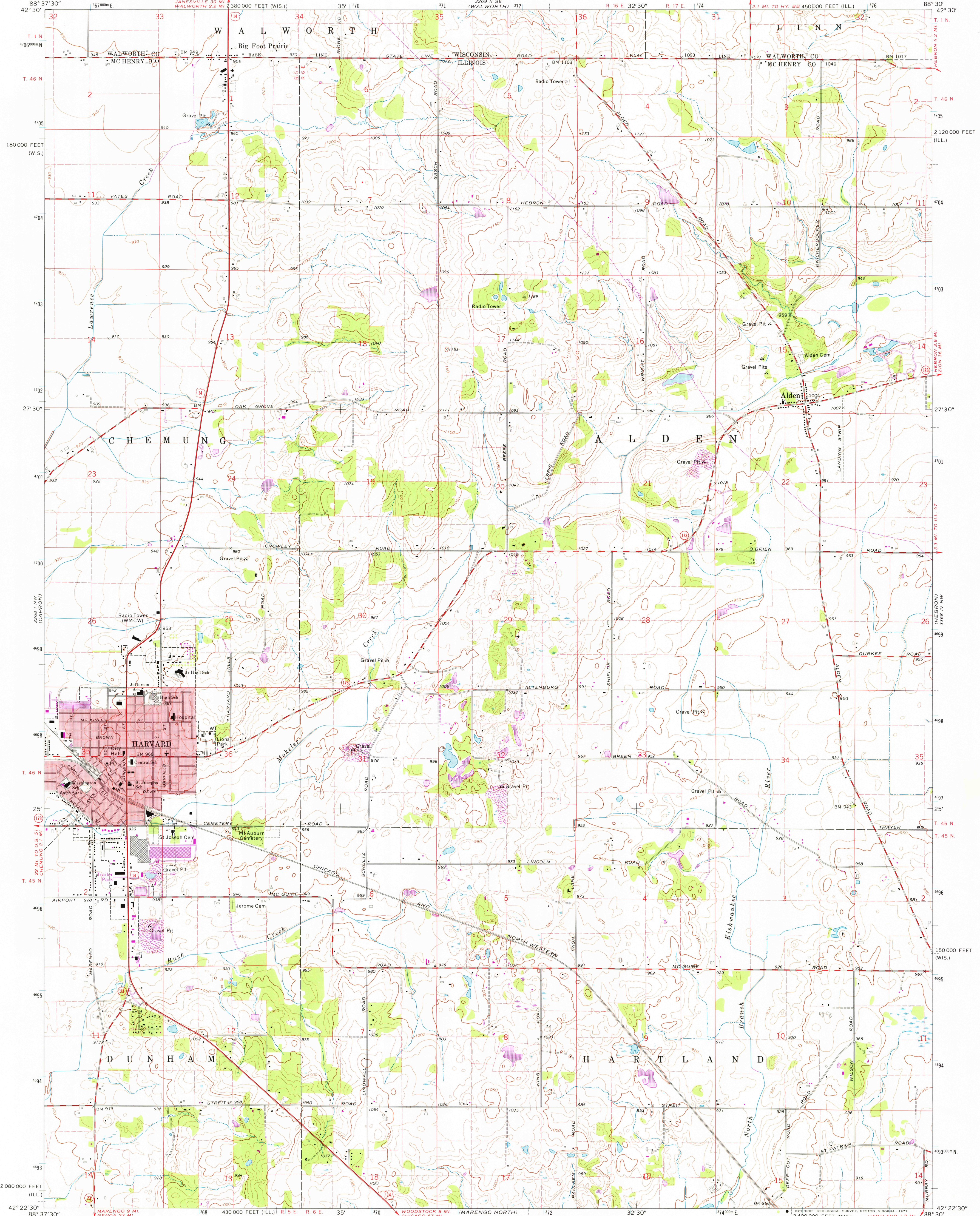
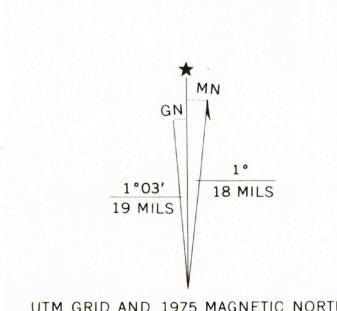


UNITED STATES  
DEPARTMENT OF THE INTERIOR  
GEOLOGICAL SURVEY

HARVARD QUADRANGLE  
ILLINOIS-WISCONSIN  
7.5 MINUTE SERIES (TOPOGRAPHIC)

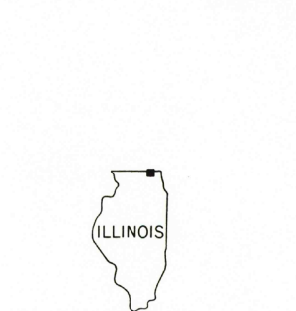


Mapped, edited, and published by the Geological Survey  
Control by USGS and USC&GS  
Topography by photogrammetric methods from aerial  
photographs taken 1966. Field checked 1970  
Polyconic projection. 1927 North American datum  
10,000-foot grids based on Illinois coordinate system, east zone  
and Wisconsin coordinate system, south zone  
1000-metre Universal Transverse Mercator grid ticks,  
zone 16, shown in blue  
Red tint indicates area in which only landmark buildings are shown  
Fine red dashed lines indicate selected fence and field lines where  
generally visible on aerial photographs. This information is unchecked  
Revisions shown in purple compiled from aerial photographs  
taken 1975. This information not field checked  
Purple tint indicates extension of urban areas



CONTOUR INTERVAL 10 FEET  
NATIONAL GEODETIC VERTICAL DATUM OF 1929

THIS MAP COMPLIES WITH NATIONAL MAP ACCURACY STANDARDS  
FOR SALE BY U.S. GEOLOGICAL SURVEY, RESTON, VIRGINIA 22092  
STATE GEOLOGICAL SURVEY, URBANA, ILLINOIS 61801.  
AND WISCONSIN GEOLOGICAL AND NATURAL HISTORY SURVEY, MADISON, WISCONSIN 53706  
A FOLDER DESCRIBING TOPOGRAPHIC MAPS AND SYMBOLS IS AVAILABLE ON REQUEST



ROAD CLASSIFICATION  
Primary highway, all weather, hard surface  
Secondary highway, all weather, hard surface  
Light-duty road, all weather, improved surface  
Unimproved road, fair or dry weather  
U.S. Route  
State Route

USGS  
Historical File  
Topographic Division

HARVARD, ILL.-WIS.  
N4222.5-W8830/7.5

1970  
PHOTO REVISITED 1975  
AMS 3268 I NE-SERIES V863

FEB 28 1977  
3670