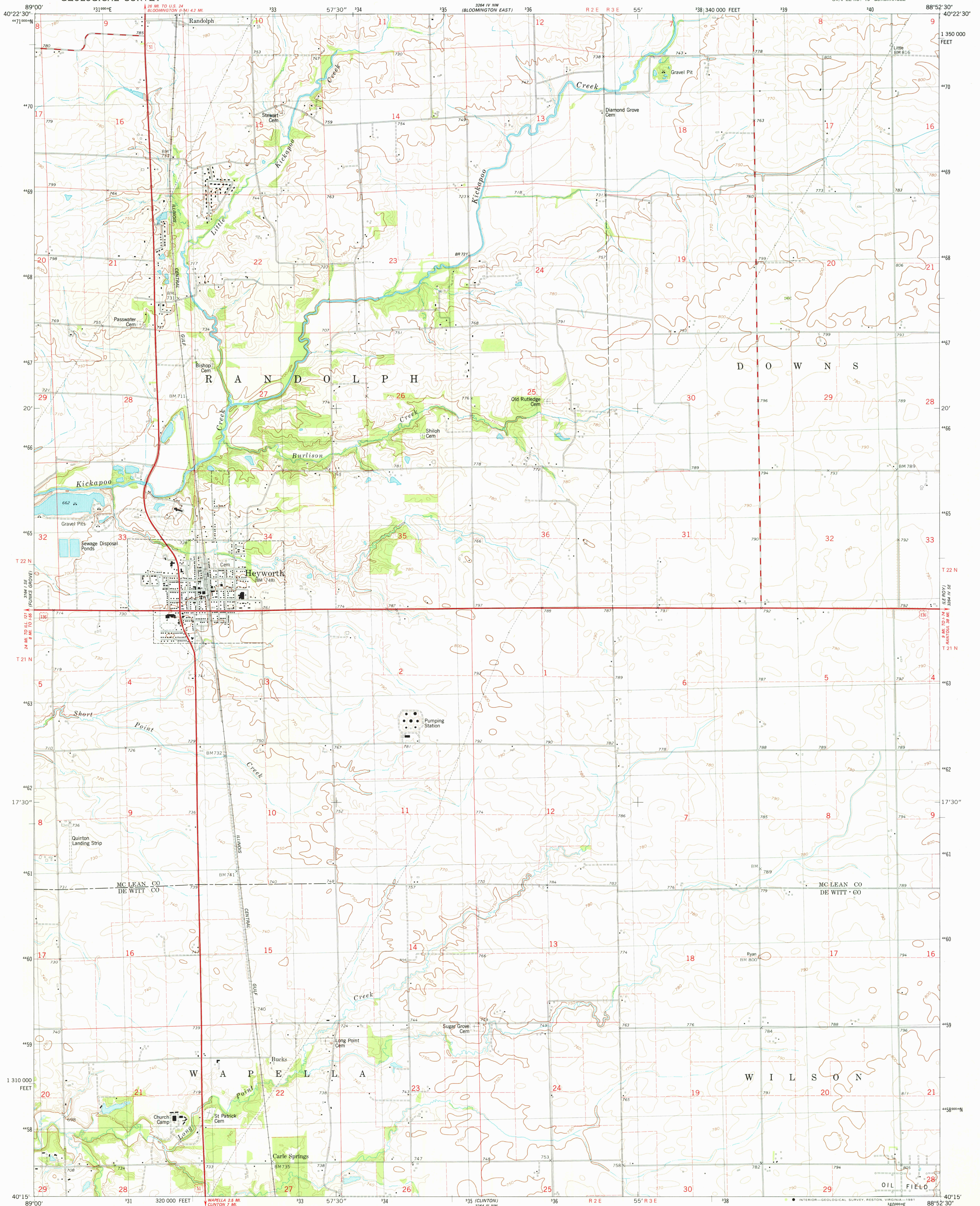


UNITED STATES  
DEPARTMENT OF THE INTERIOR  
GEOLOGICAL SURVEY

HEYWORTH QUADRANGLE  
ILLINOIS  
7.5 MINUTE SERIES (TOPOGRAPHIC)



Mapped, edited, and published by the Geological Survey

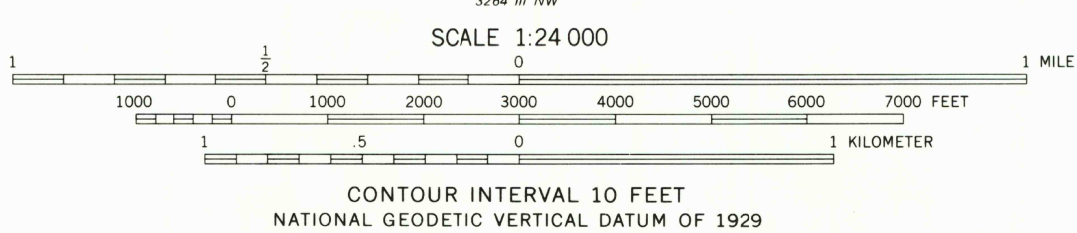
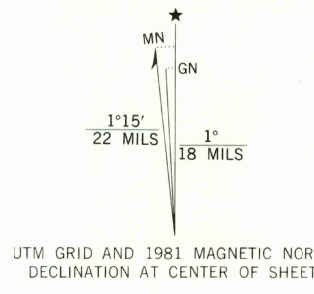
Control by USGS and NOS/NOAA

Topography by photogrammetric methods from aerial photographs  
taken 1975. Field checked 1976. Map edited 1981

Projection and 10,000-foot grid ticks: Illinois coordinate  
system, east zone (transverse Mercator)  
1000-meter Universal Transverse Mercator grid, zone 16  
1927 North American Datum

To place on the predicted North American Datum 1983  
move the projection lines 6 meters east as shown by  
dashed corner ticks

Fine red dashed lines indicate selected fence and field lines where  
generally visible on aerial photographs. This information is unchecked



THIS MAP COMPLIES WITH NATIONAL MAP ACCURACY STANDARDS  
FOR SALE BY U. S. GEOLOGICAL SURVEY, RESTON, VIRGINIA 22092  
AND BY THE STATE GEOLOGICAL SURVEY, URBANA, ILLINOIS 61801  
A FOLDER DESCRIBING TOPOGRAPHIC MAPS AND SYMBOLS IS AVAILABLE ON REQUEST



- ROAD CLASSIFICATION
- Primary highway, hard surface
  - Light-duty road, hard or improved surface
  - Secondary highway, hard surface
  - Unimproved road
  - Interstate Route
  - U. S. Route
  - State Route

HEYWORTH, ILL.  
SW/4 LE ROY 15' QUADRANGLE  
N4015-W8852.5/7.5

1981

DMA 3264 IV SW-SERIES Y863

2450