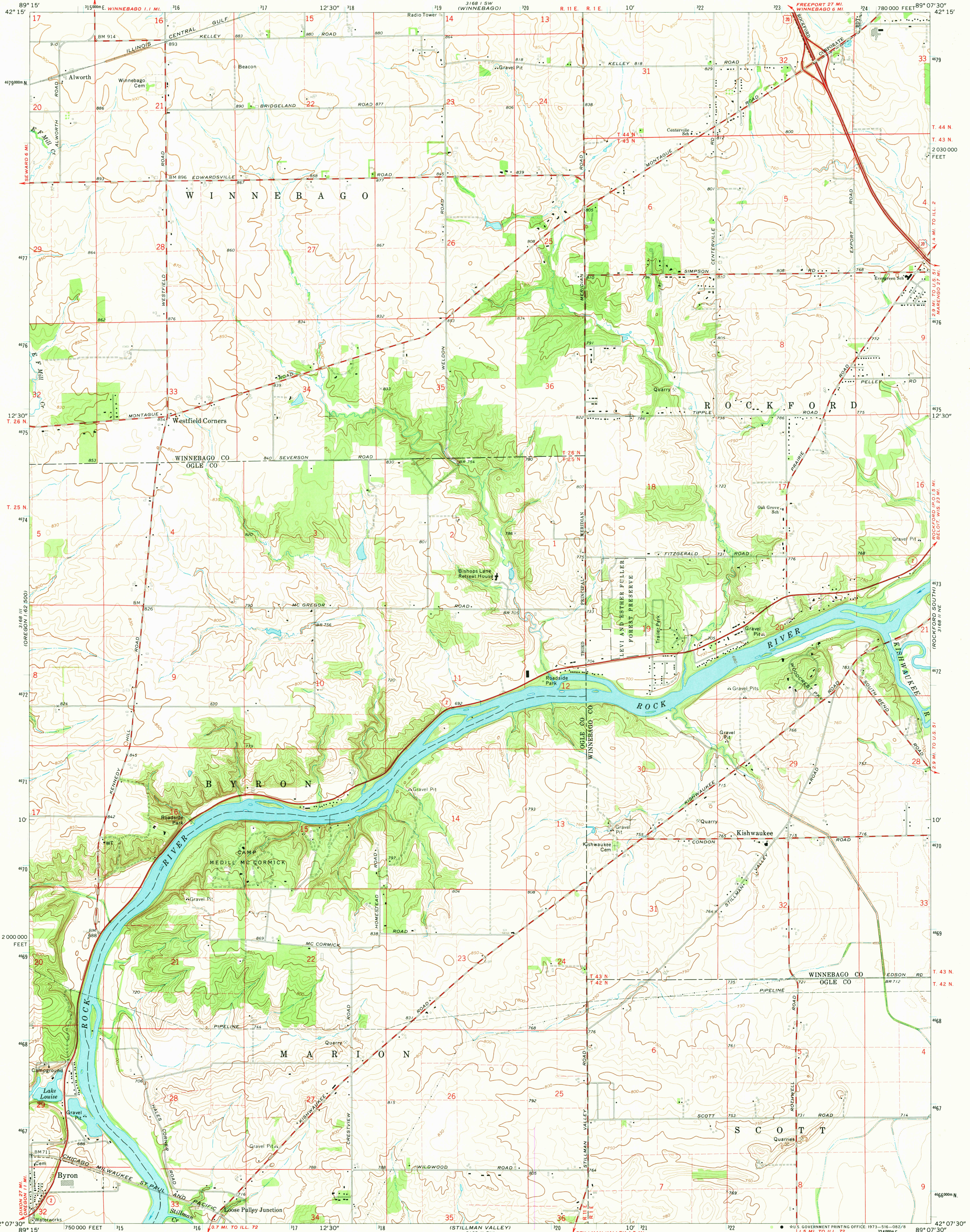


UNITED STATES  
DEPARTMENT OF THE INTERIOR  
GEOLOGICAL SURVEY

KISHWAUKEE QUADRANGLE  
ILLINOIS  
7.5 MINUTE SERIES (TOPOGRAPHIC)



Mapped, edited, and published by the Geological Survey  
Control by USGS and USC&GS  
Topography by photogrammetric methods from aerial  
photographs taken 1970. Field checked 1971.  
Polyconic projection. 1927 North American datum  
10,000-foot grid based on Illinois coordinate system, west zone  
1000-meter Universal Transverse Mercator grid ticks,  
zone 16, shown in blue  
Fine red dashed lines indicate selected fence and field lines where  
generally visible on aerial photographs. This information is unchecked

UTM GRID AND 1971 MAGNETIC NORTH  
DECLINATION AT CENTER OF SHEET

SCALE 1:24 000  
1 1000 2000 3000 4000 5000 6000 7000 FEET  
1 KILOMETER  
CONTOUR INTERVAL 10 FEET  
DOTTED LINES REPRESENT 5-FOOT CONTOURS  
DATUM IS MEAN SEA LEVEL



ROAD CLASSIFICATION  
Primary highway, hard surface  
Secondary highway, hard surface  
Unimproved road  
Interstate Route  
U.S. Route  
State Route

KISHWAUKEE, ILL.  
NW 1/4 KINGS 15' QUADRANGLE  
N4207.5-W8907.5/7.5

1971

AMS 3168 II NW-SERIES V863

SEP 11 1973

Hoan  
3500

50 plane