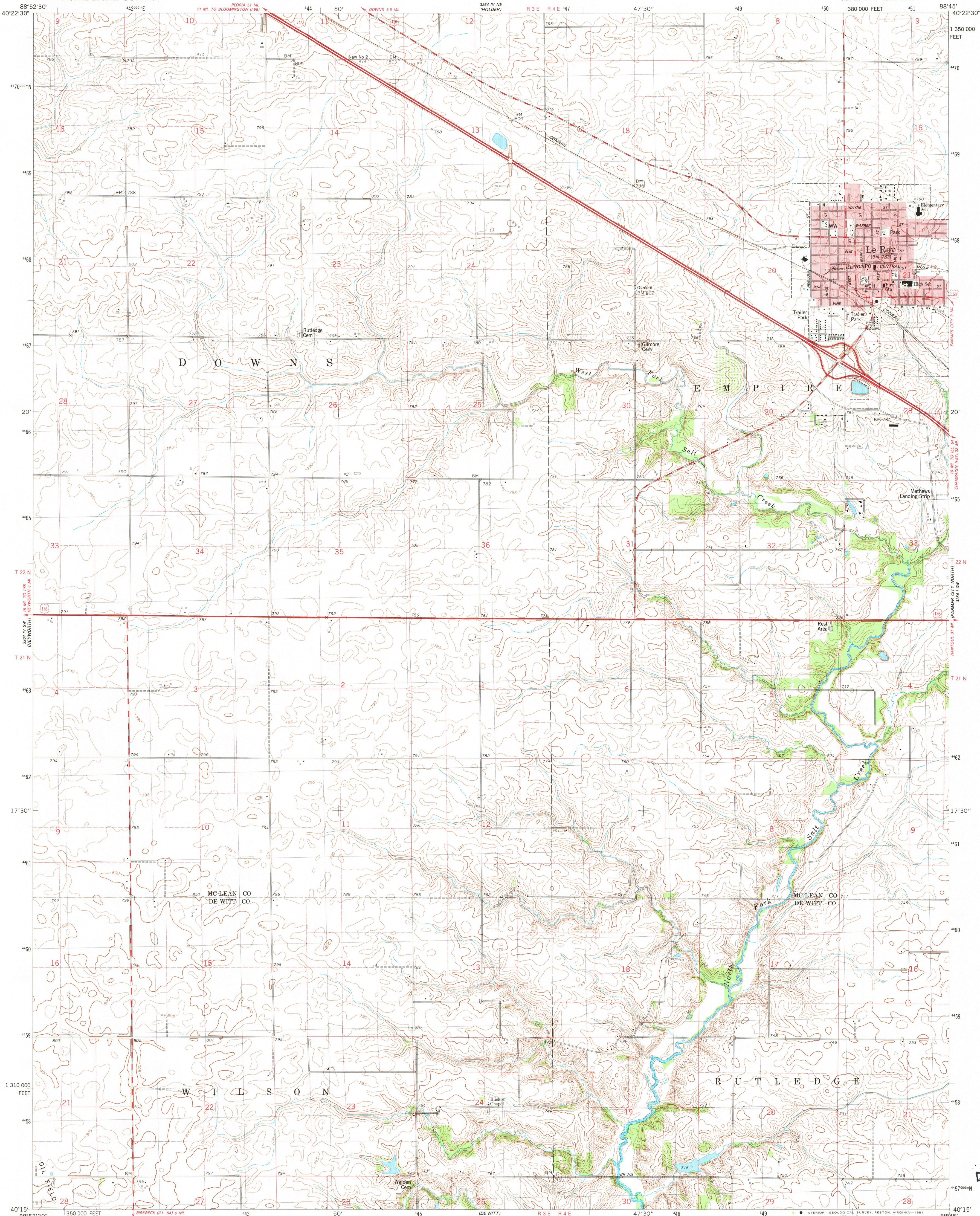


UNITED STATES  
DEPARTMENT OF THE INTERIOR  
GEOLOGICAL SURVEY

LE ROY QUADRANGLE  
ILLINOIS  
7.5 MINUTE SERIES (TOPOGRAPHIC)

SE/4 LE ROY 15' QUADRANGLE



Mapped, edited, and published by the Geological Survey

Control by USGS and NOS/NOAA

Topography by photogrammetric methods from aerial photographs taken 1975. Field checked 1976. Map edited 1981

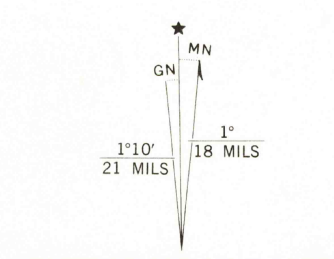
Projection and 10,000-foot grid ticks: Illinois coordinate system, east zone (transverse Mercator)  
1000-meter Universal Transverse Mercator grid, zone 16  
1927 North American Datum

To place on the predicted North American Datum 1983 move the projection lines 6 meters east as shown by dashed corner ticks

Areas covered by dashed light-blue pattern are subject to controlled inundation by Lake Clinton

Red tint indicates areas in which only landmark buildings are shown

Fine red dashed lines indicate selected fence and field lines where generally visible on aerial photographs. This information is unchecked



CONTOUR INTERVAL 5 FEET  
NATIONAL GEODETIC VERTICAL DATUM OF 1929

THIS MAP COMPLIES WITH NATIONAL MAP ACCURACY STANDARDS  
FOR SALE BY U. S. GEOLOGICAL SURVEY, RESTON, VIRGINIA 22092  
AND BY THE STATE GEOLOGICAL SURVEY, URBANA, ILLINOIS 61801  
A FOLDER DESCRIBING TOPOGRAPHIC MAPS AND SYMBOLS IS AVAILABLE ON REQUEST

ROAD CLASSIFICATION	
Primary highway, hard surface	Light-duty road, hard or improved surface
Secondary highway, hard surface	Unimproved road
Interstate Route	U. S. Route
	State Route



LE ROY, ILL.  
SE/4 LE ROY 15' QUADRANGLE  
N4015-W8845/7.5

1981

DMA 3264 IV SE-SERIES V863

DEC 17 1981

7557