

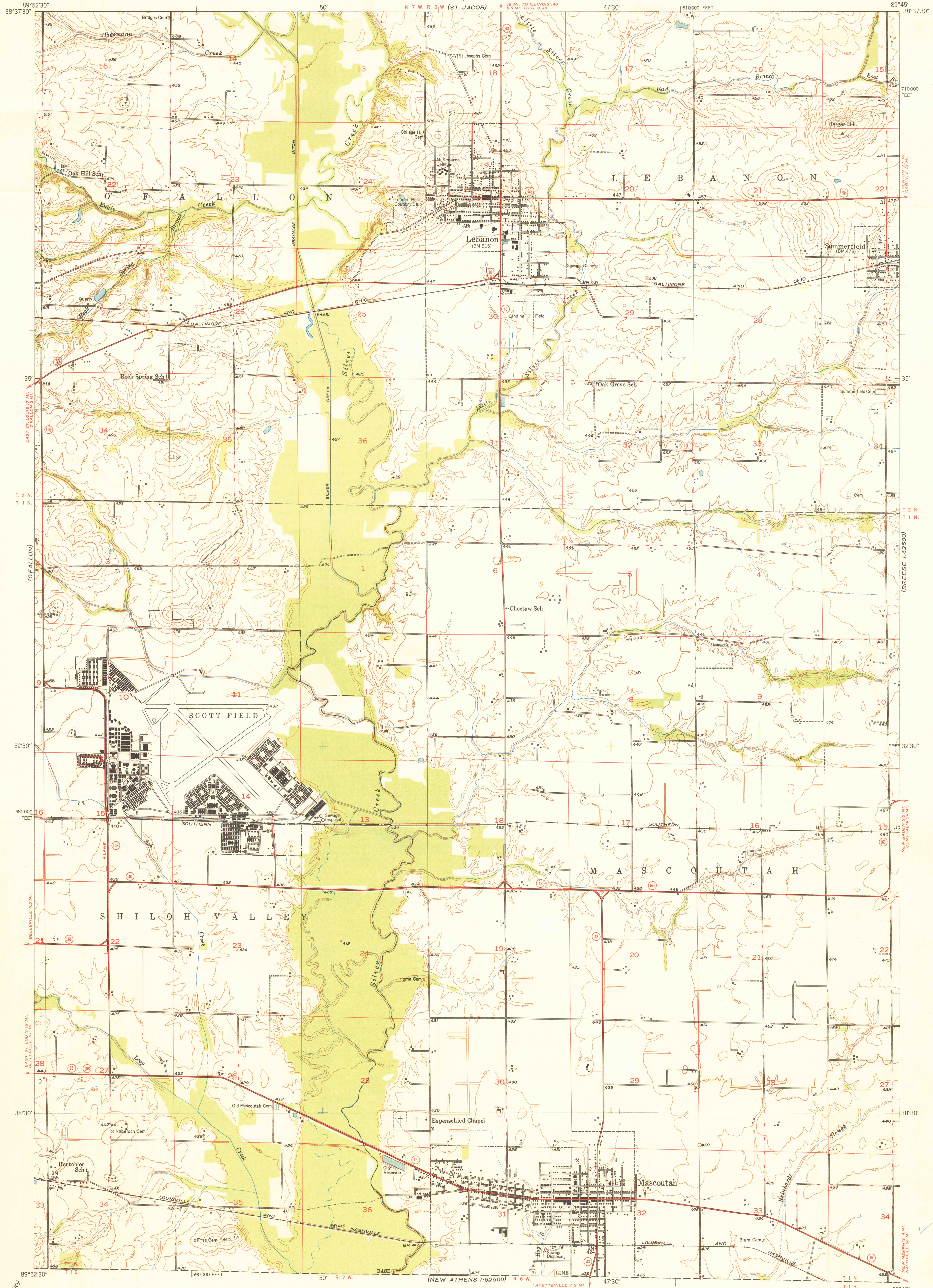
(COLLINSVILLE)

(BREESE 1:62500)

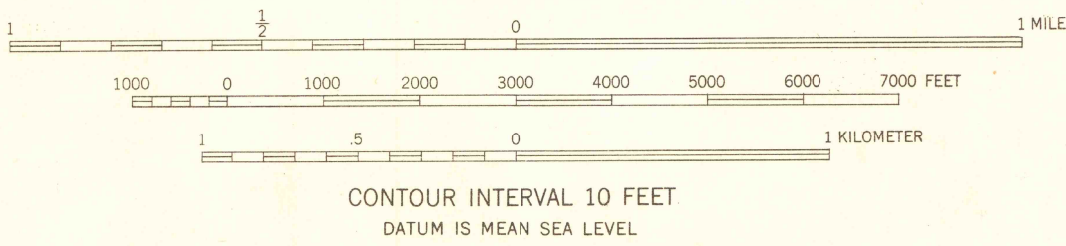
UNITED STATES
DEPARTMENT OF THE INTERIOR
GEOLOGICAL SURVEY

STATE OF ILLINOIS
ADLAI E. STEVENSON, GOVERNOR
DEPARTMENT OF REGISTRATION AND EDUCATION
NOBLE J. PUFFER, DIRECTOR
GEOLOGICAL SURVEY DIVISION, M. M. LEIGHTON, CHIEF
URBANA, ILLINOIS

LEBANON QUADRANGLE
ILLINOIS-ST. CLAIR CO.
7.5 MINUTE SERIES (TOPOGRAPHIC)
SE/4 BELLEVILLE 15' QUADRANGLE



Mapped, edited, and published by the Geological Survey
Control by USGS and USC&GS
Culture and drainage in part compiled from
aerial photographs taken 1946
Topography by plane-table methods 1948
Polyconic projection. 1927 North American datum
10,000-foot grid based on Illinois coordinate system,
west zone



ROAD CLASSIFICATION
HARD-SURFACE ALL WEATHER ROADS DRY WEATHER ROADS
Heavy-duty ———— LANE LANE Improved dirt ————
Medium-duty ———— LANE LANE Unimproved dirt ————
Loose-surface, graded, or narrow hard-surface ————
U. S. Route State Route

LEBANON, ILL.
SE/4 BELLEVILLE 15' QUADRANGLE
N3830-W8945/7.5
EDITION OF 1949

THIS MAP COMPLIES WITH NATIONAL MAP ACCURACY STANDARDS
FOR SALE BY U. S. GEOLOGICAL SURVEY, WASHINGTON 25, D. C.
AND BY THE STATE GEOLOGICAL SURVEY, URBANA, ILLINOIS



(NEW ATHENS 1:62500)

(OKAWVILLE 1:62500)