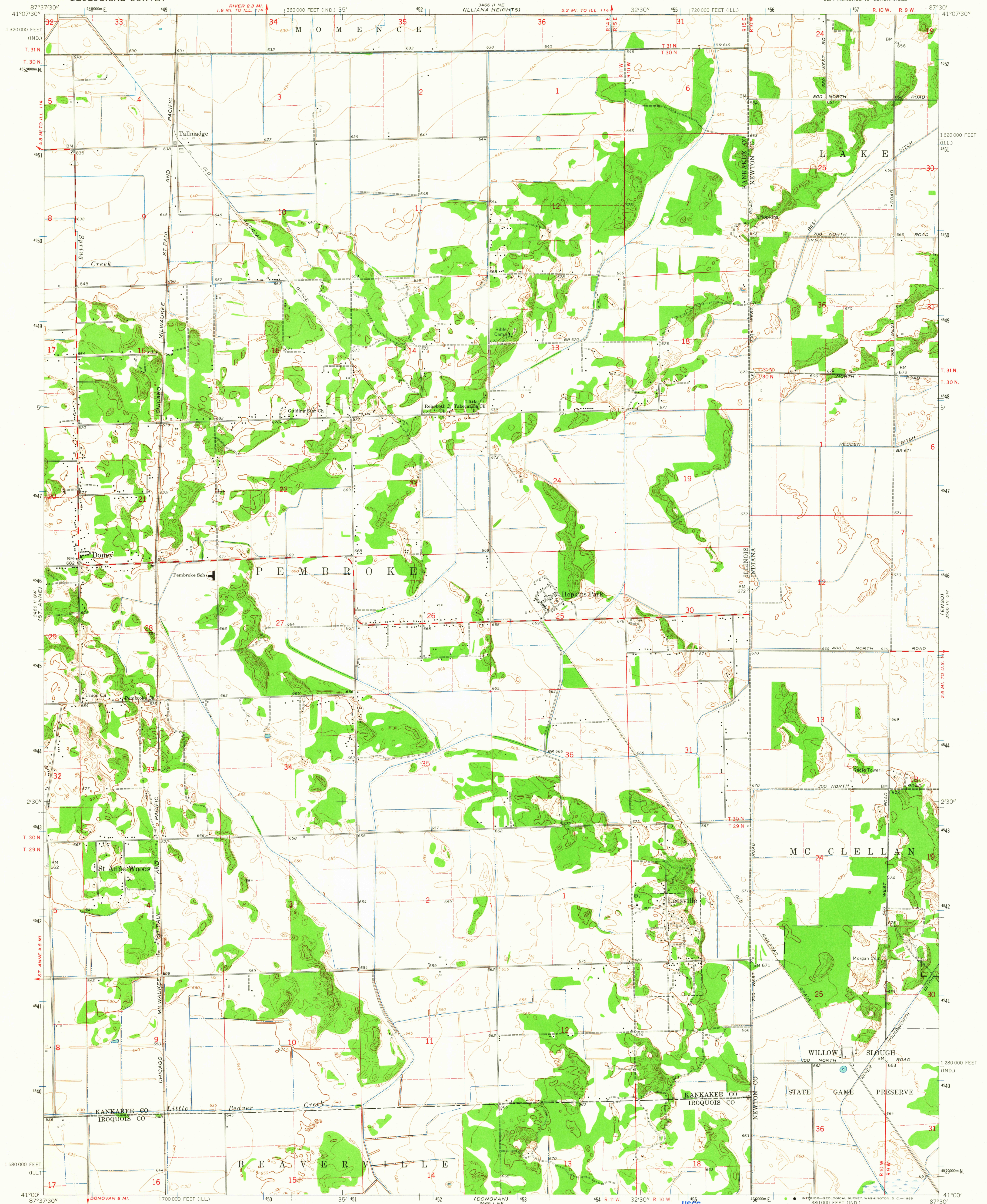


UNITED STATES
DEPARTMENT OF THE INTERIOR
GEOLOGICAL SURVEY

LEESVILLE QUADRANGLE
ILLINOIS-INDIANA
7.5 MINUTE SERIES (TOPOGRAPHIC)
SE 1/4 MOMENCE 15' QUADRANGLE

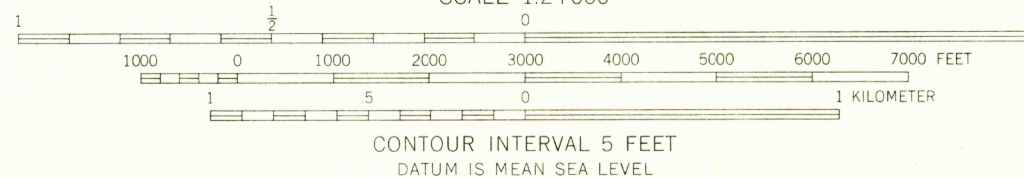
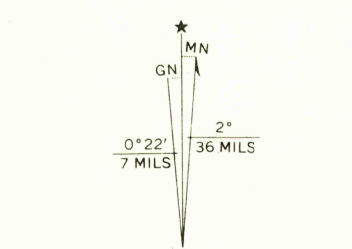


Mapped, edited, and published by the Geological Survey
Control by USGS and USC&GS

Topography by photogrammetric methods from aerial
photographs taken 1959-60 and planimetric surveys 1962-63

Polyconic projection. 1927 North American datum
10,000-foot grids based on Illinois coordinate system, east zone,
and Indiana coordinate system, west zone
1000-meter Universal Transverse Mercator grid ticks,
zone 16, shown in blue

Fine red dashed lines indicate selected fence and field lines where
generally visible on aerial photographs. This information is unchecked



USGS
Historical File
Topographic Division



ROAD CLASSIFICATION
Medium-duty ——— Light-duty ———
Unimproved dirt =

MAR 10 1965

2625

THIS MAP COMPLIES WITH NATIONAL MAP ACCURACY STANDARDS
FOR SALE BY U. S. GEOLOGICAL SURVEY, WASHINGTON 25, D. C.,
THE STATE GEOLOGICAL SURVEY, URBANA, ILLINOIS,
AND INDIANA DEPARTMENT OF CONSERVATION, INDIANAPOLIS, INDIANA
A FOLDER DESCRIBING TOPOGRAPHIC MAPS AND SYMBOLS IS AVAILABLE ON REQUEST

LEESVILLE, ILL.-IND.
SE 1/4 MOMENCE 15' QUADRANGLE
N4100-W8730/7.5

1963

AMS 3466 II SE-SERIES V863

U.S.G.S.

FILE COPY
TOPOGRAPHIC DIVISION