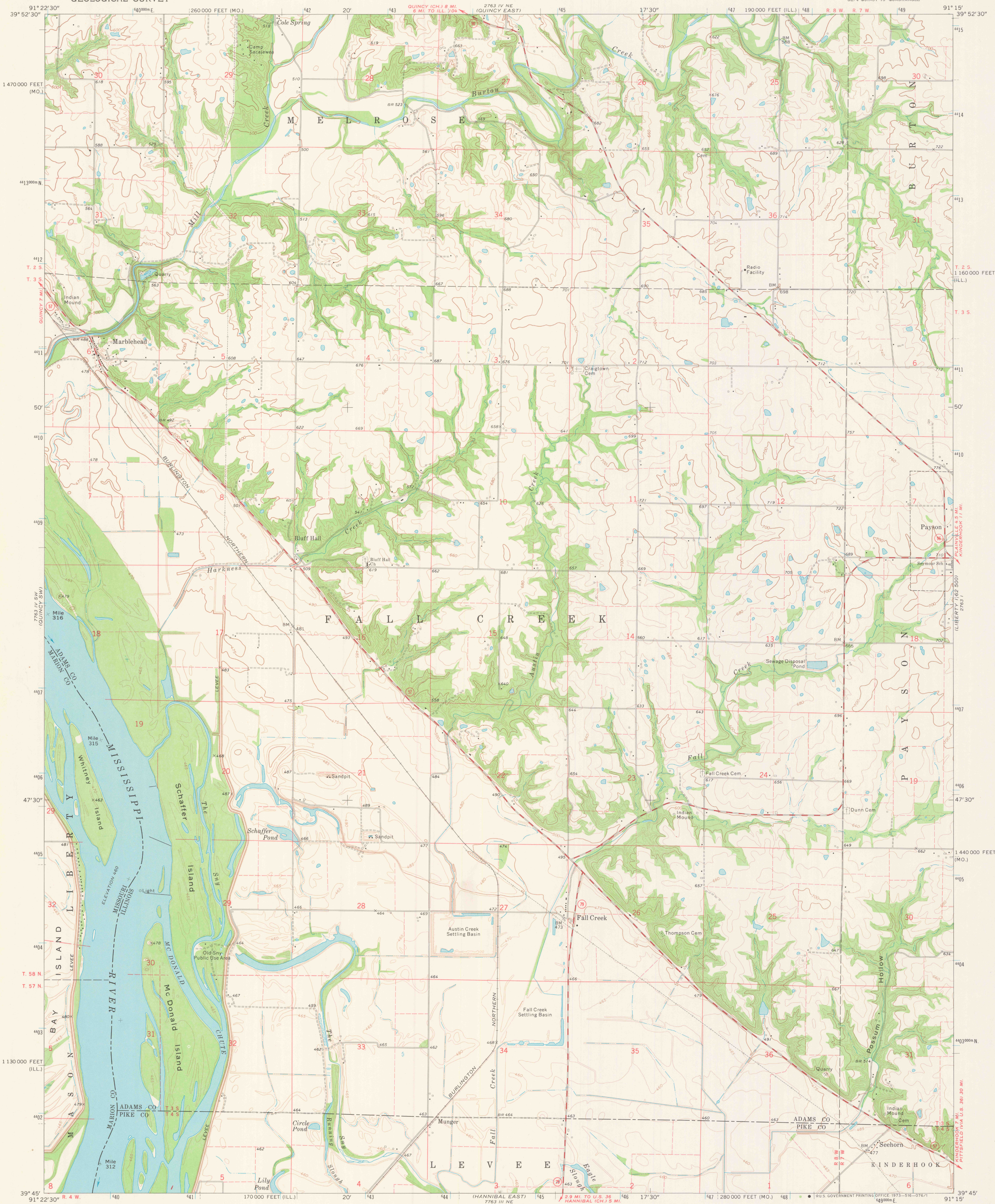


UNITED STATES
DEPARTMENT OF THE INTERIOR
GEOLOGICAL SURVEY

MARBLEHEAD QUADRANGLE
ILLINOIS—MISSOURI
7.5 MINUTE SERIES (TOPOGRAPHIC)
SE 1/4 QUINCY 15' QUADRANGLE

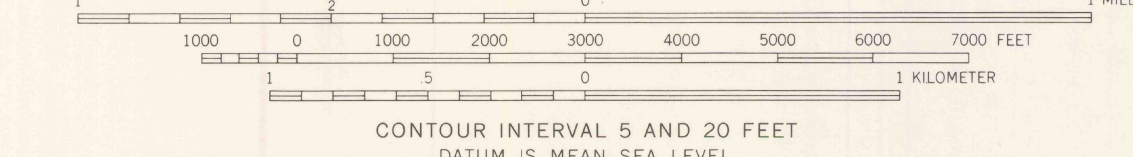
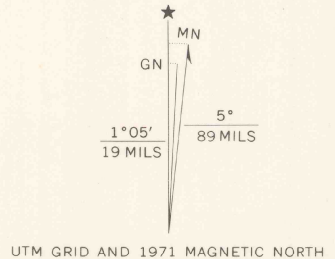


Mapped, edited, and published by the Geological Survey in cooperation with the Missouri Geological Survey and Water Resources

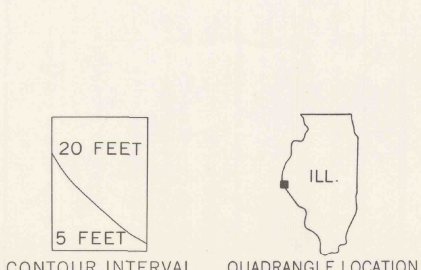
Control by USGS and USC&GS
Topography by photogrammetric methods from aerial photographs taken 1969-70. Field checked 1971

Polyconic projection. 1927 North American datum
10,000-foot grids based on Illinois coordinate system, west zone and Missouri coordinate system, east zone
1000-meter Universal Transverse Mercator grid ticks, zone 15, shown in blue

Fine red dashed lines indicate selected fence and field lines where generally visible on aerial photographs. This information is unchecked



THIS MAP COMPLIES WITH NATIONAL MAP ACCURACY STANDARDS
FOR SALE BY U.S. GEOLOGICAL SURVEY, DENVER, COLORADO 80225, OR WASHINGTON, D. C. 20242,
STATE GEOLOGICAL SURVEY, URBANA, ILLINOIS 61801,
AND MISSOURI GEOLOGICAL SURVEY, ROLLA, MISSOURI 65401
A FOLDER DESCRIBING TOPOGRAPHIC MAPS AND SYMBOLS IS AVAILABLE ON REQUEST



ROAD CLASSIFICATION

Primary highway, hard surface	Light-duty road, hard or improved surface
Secondary highway, hard surface	Unimproved road
Interstate Route	U.S. Route
	State Route

MARBLEHEAD, ILL.—MO.
SE 1/4 QUINCY 15' QUADRANGLE
N3945—W9115/7.5
1971

AMS 2763 IV SE—SERIES V863

FILE COPY
FEB 20 1973
MAP INFORMATION OFFICE
GEOLOGICAL SURVEY