

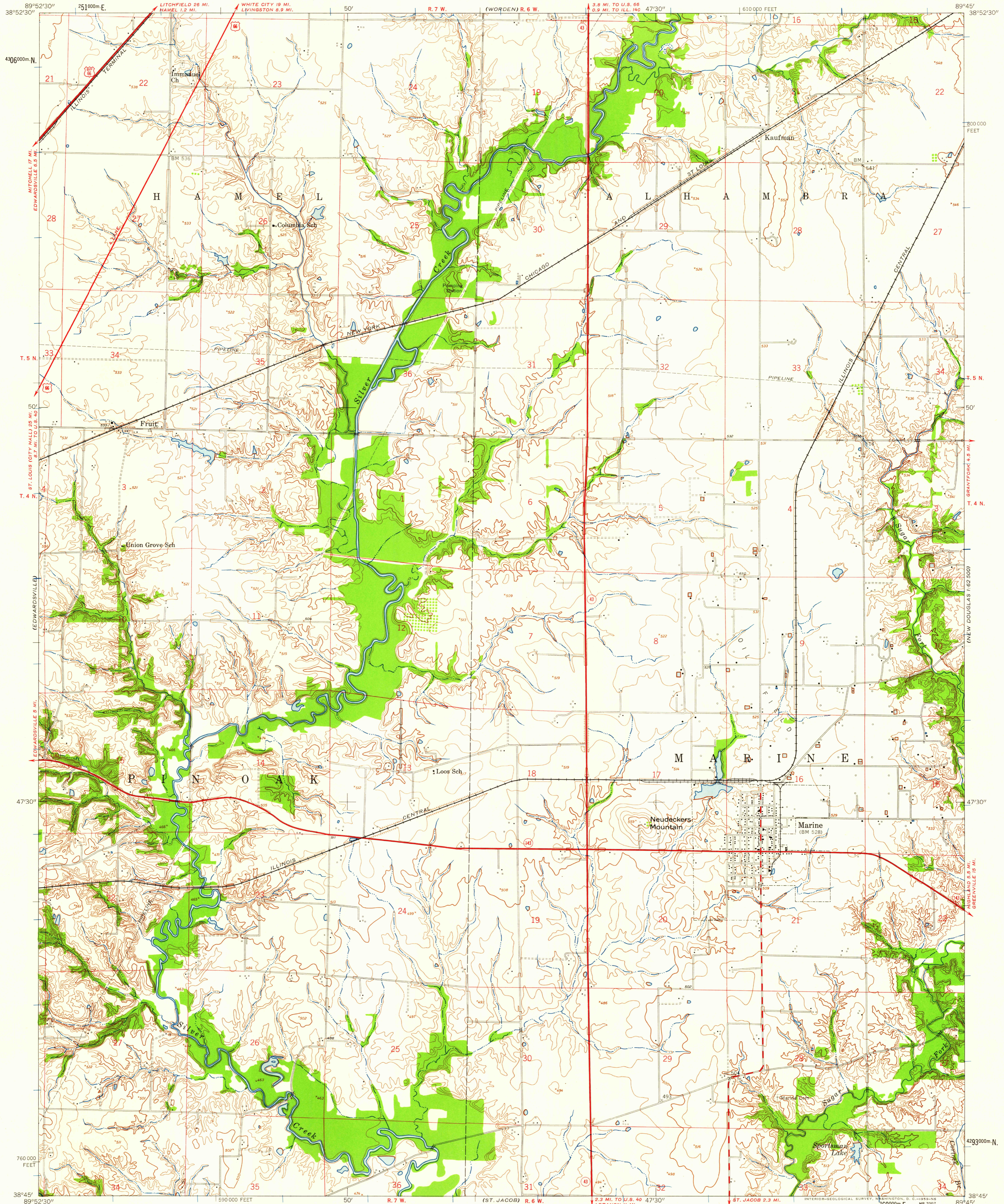
(PRAIRIETOWN)

UNITED STATES
DEPARTMENT OF THE INTERIOR
GEOLOGICAL SURVEY

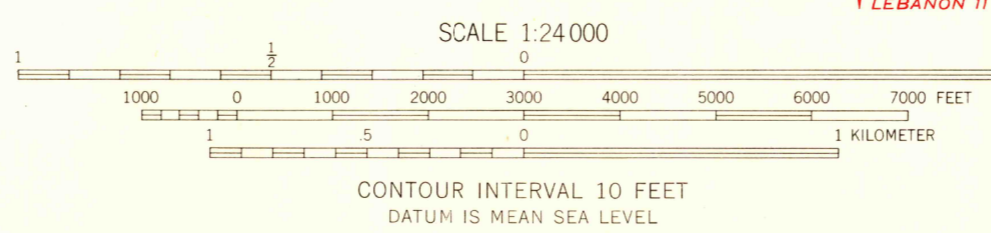
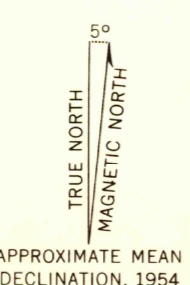
UNITED STATES
DEPARTMENT OF THE ARMY
CORPS OF ENGINEERS

MARINE QUADRANGLE
ILLINOIS-MADISON CO.
7.5 MINUTE SERIES (TOPOGRAPHIC)
SE/4 EDWARDSVILLE 15' QUADRANGLE

(NEW DOUGLAS 1:62 500)



Mapped by the Army Map Service
Published for civil use by the Geological Survey
Control by USGS, USC&GS, and USCE
Topography from aerial photographs by photogrammetric methods
Aerial photographs taken 1952. Field check 1954
Polyconic projection. 1927 North American datum
10,000-foot grid based on Illinois coordinate system, west zone
1000-meter Universal Transverse Mercator grid ticks,
zone 16, shown in blue
Unchecked elevations are shown in brown



USGS
FILE COPY
TOPOGRAPHIC DIVISION

ROAD CLASSIFICATION 1957

Heavy-duty	Light-duty
Medium-duty	Unimproved dirt
U. S. Route	State Route



MARINE, ILL.
SE/4 EDWARDSVILLE 15' QUADRANGLE
N 3845-W 8945/7.5

THIS MAP COMPLIES WITH NATIONAL MAP ACCURACY STANDARDS
FOR SALE BY U. S. GEOLOGICAL SURVEY, WASHINGTON 25, D. C.
AND BY THE STATE GEOLOGICAL SURVEY, URBANA, ILLINOIS
A FOLDER DESCRIBING TOPOGRAPHIC MAPS AND SYMBOLS IS AVAILABLE ON REQUEST

1954

JUN 3 - 1959

2540