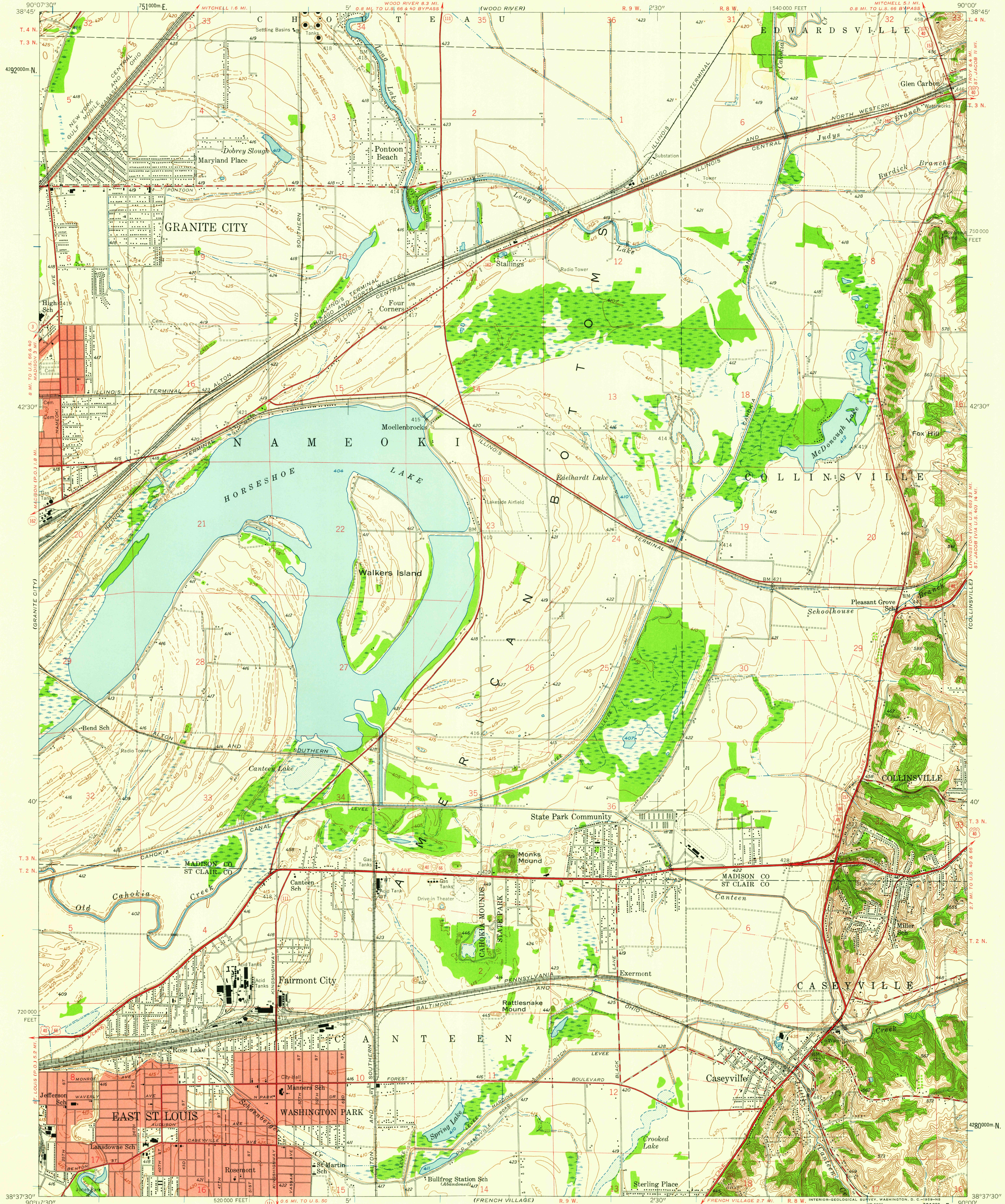


UNITED STATES  
DEPARTMENT OF THE INTERIOR  
GEOLOGICAL SURVEY

STATE OF ILLINOIS  
DEPARTMENT OF REGISTRATION AND EDUCATION  
GEOLOGICAL SURVEY DIVISION

MONKS MOUND QUADRANGLE  
ILLINOIS  
7.5 MINUTE SERIES (TOPOGRAPHIC)



Mapped by the Geological Survey  
Revised by the Army Map Service  
Published for civil use by the Geological Survey  
Control by USGS and USC&GS  
Topography from planetable surveys by the Geological Survey 1930  
Planimetric detail revised from aerial photographs taken 1952  
Field check 1953-1954  
Polyconic projection, 1927 North American datum  
10,000-foot grid based on Illinois coordinate system, west zone  
1000-meter Universal Transverse Mercator grid ticks, zone 15,  
shown in blue  
Red tint indicates areas in which only landmark buildings are shown

TRUE NORTH  
MAGNETIC NORTH  
APPROXIMATE MEAN  
DECLINATION, 1954

SCALE 1:24,000  
1 1000 0 1000 2000 3000 4000 5000 6000 7000 FEET  
1 KILOMETER  
CONTOUR INTERVAL 10 FEET  
DASHED LINES REPRESENT 5-FOOT CONTOURS  
DATUM IS MEAN SEA LEVEL  
THIS MAP COMPLIES WITH NATIONAL MAP ACCURACY STANDARDS  
FOR SALE BY U. S. GEOLOGICAL SURVEY, WASHINGTON 25, D. C.  
AND BY THE STATE GEOLOGICAL SURVEY, URBANA, ILLINOIS  
A FOLDER DESCRIBING TOPOGRAPHIC MAPS AND SYMBOLS IS AVAILABLE ON REQUEST

USGS  
Historical File  
Topographic Division  
QUADRANGLE LOCATION  
ILLINOIS

ROAD CLASSIFICATION  
Heavy-duty ——— Light-duty ———  
Medium-duty ——— Unimproved dirt ———  
U. S. Route ——— State Route ———  
USGS  
FILE COPY  
TOPOGRAPHIC DIVISION  
MONKS MOUND, ILL.  
N 3837.5 - W 9000 / 7.5  
1954

JUN 3 - 1959

3565