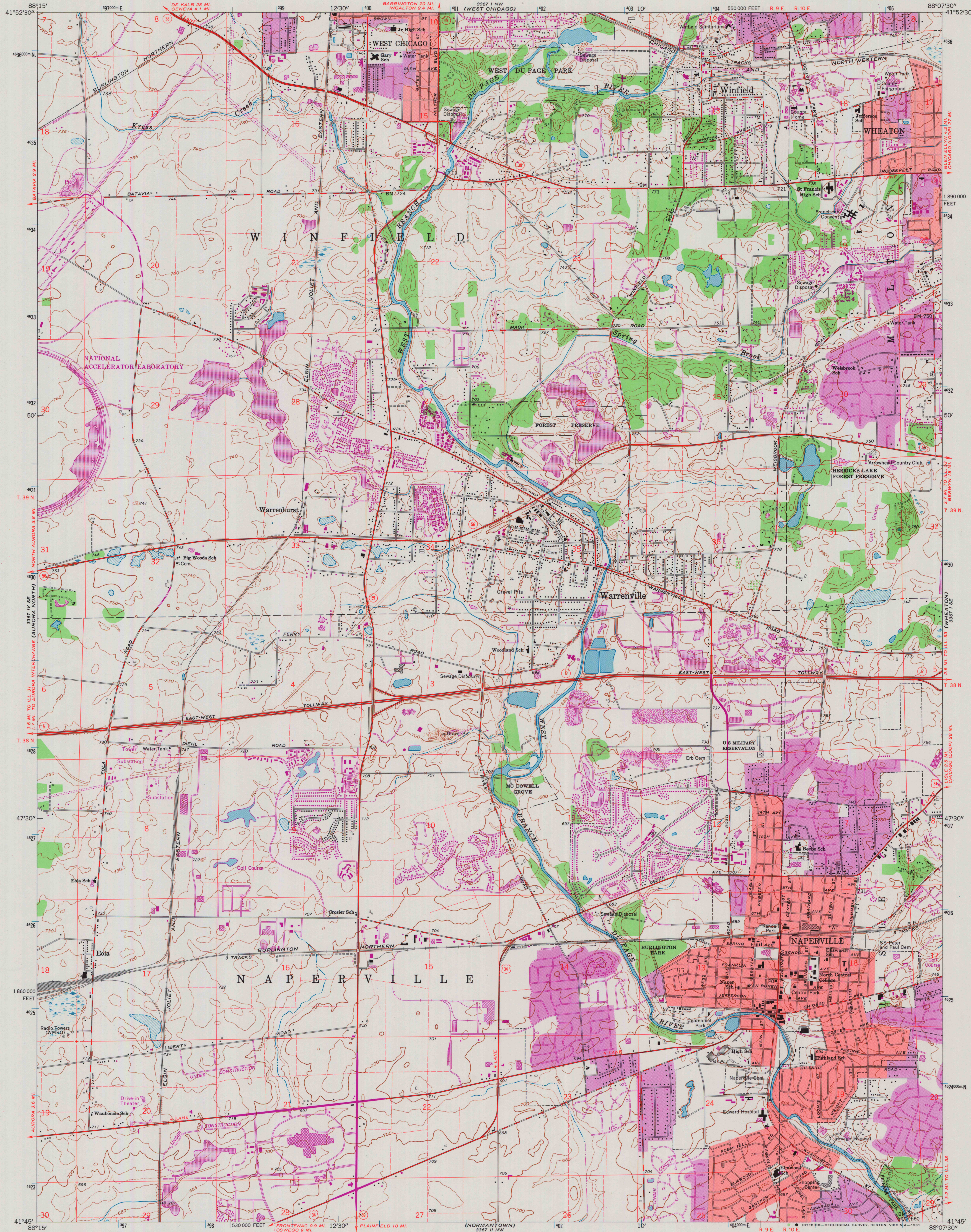
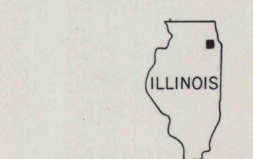
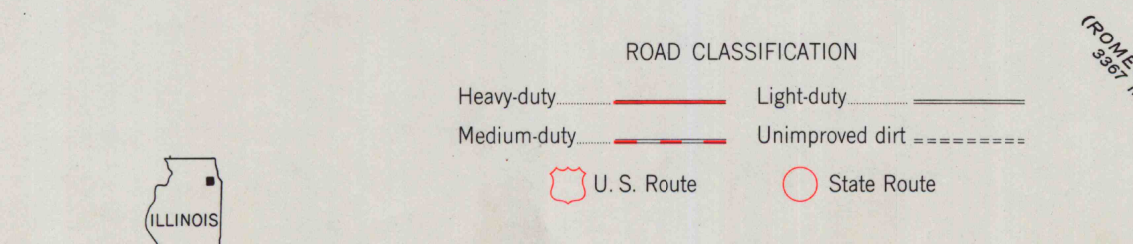
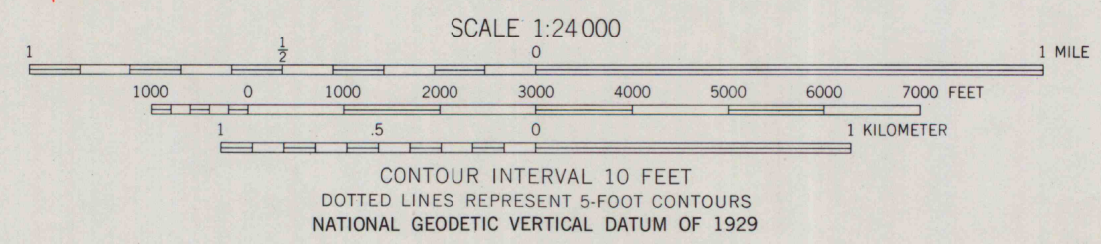
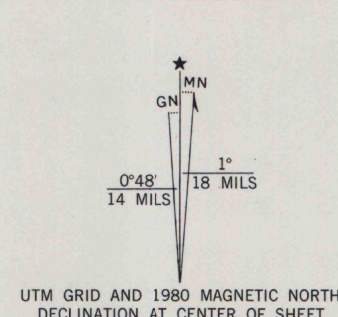


UNITED STATES
DEPARTMENT OF THE INTERIOR
GEOLOGICAL SURVEY

NAPERVILLE QUADRANGLE
ILLINOIS—DU PAGE CO.
7.5 MINUTE SERIES (TOPOGRAPHIC)
SW/4 WHEATON 15' QUADRANGLE



Mapped, edited, and published by the Geological Survey
Control by USGS, USC&GS, and Cook County Highway Department
Topography by photogrammetric methods from aerial photographs
taken 1952 and 1953. Revised from aerial
photographs taken 1962. Field checked 1962
Polyconic projection. 1927 North American datum
10,000-foot grid based on Illinois coordinate system, east zone
1000-meter Universal Transverse Mercator grid ticks,
zone 16, shown in blue
Red tint indicates areas in which only landmark buildings are shown
To place on the predicted North American Datum 1983
move the projection lines 2 meters north and
6 meters east as shown by dashed corner ticks
There may be private inholdings within the boundaries of
the National or State reservations shown on this map



Revisions shown in purple compiled from aerial photographs
taken 1972 and 1978. Map edited 1980
This information not field checked
Purple tint indicates extension of urban area

NAPERVILLE, ILL.
SW/4 WHEATON 15' QUADRANGLE
N4145—W8807.5/7.5
1962
PHOTO-REVISED 1972 AND 1980
DMA 3367 1 SW—SERIES V863

MAP AND AIR PHOTO
LIBRARY
JUN 15 1981
University of Wisconsin
Madison