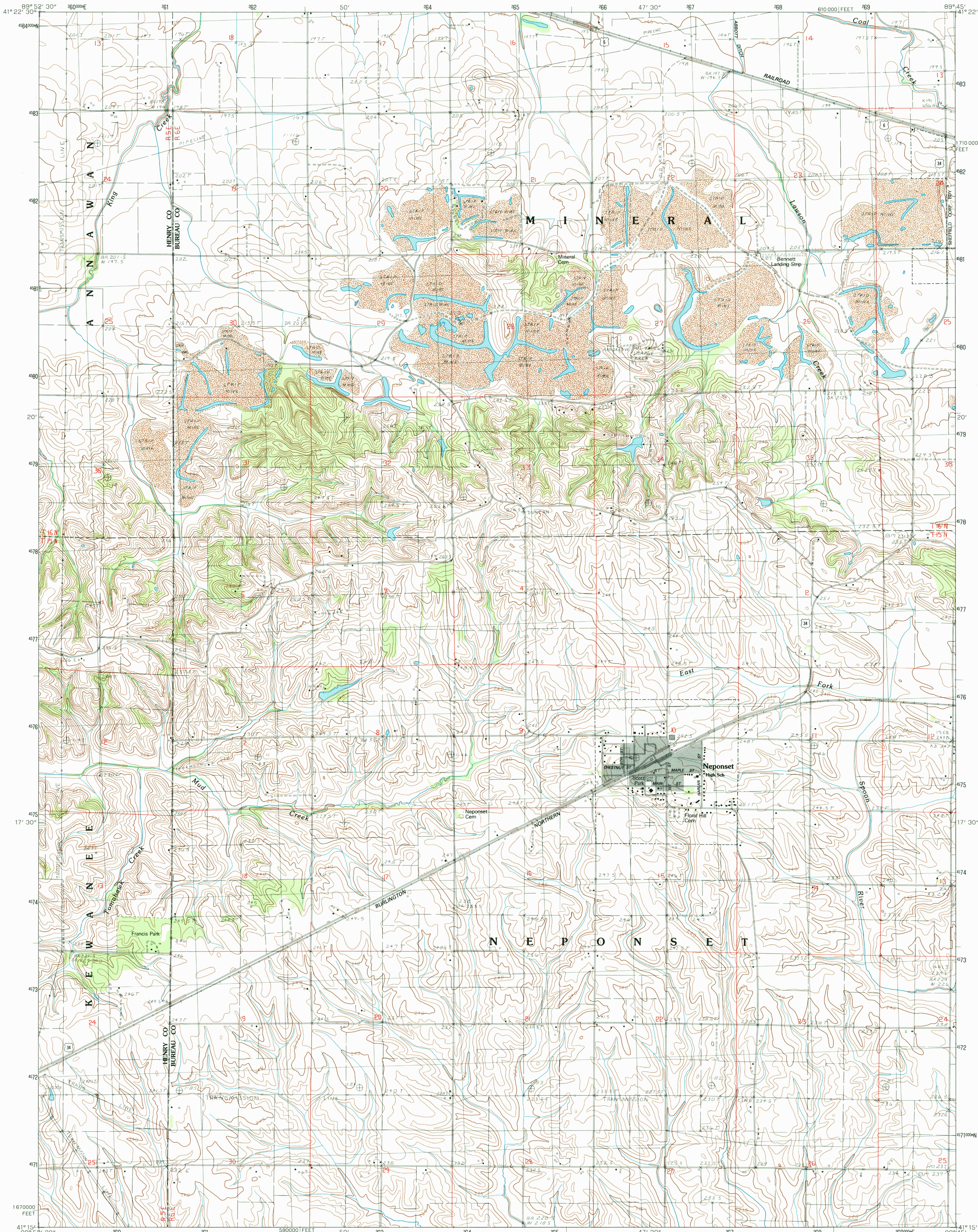


UNITED STATES  
DEPARTMENT OF THE INTERIOR  
GEOLOGICAL SURVEY

NEPONSET QUADRANGLE  
ILLINOIS  
7.5 MINUTE SERIES (TOPOGRAPHIC)



PRODUCED BY THE UNITED STATES GEOLOGICAL SURVEY  
COMPILED FROM IMAGERY DATED.....1977  
PHOTOINSPECTED USING IMAGERY DATED.....1994  
NO MAJOR CULTURE OR DRAINAGE CHANGES OBSERVED  
SURVEY CONTROL CURRENT AS OF.....1980  
BOUNDARIES, OTHER THAN CORPORATE, VERIFIED.....1998  
PROJECTION.....UNIVERSAL TRANSVERSE MERCATOR  
GRID: 1000-METER UNIVERSAL TRANSVERSE MERCATOR.....ZONE 16  
10 000-FOOT STATE GRID TICKS.....ILLINOIS, WEST ZONE  
UTM GRID DECLINATION.....0°30' WEST  
1998 MAGNETIC NORTH DECLINATION.....1°30' EAST  
VERTICAL DATUM.....NATIONAL GEODETIC VERTICAL DATUM OF 1929  
HORIZONTAL DATUM.....1927 NORTH AMERICAN DATUM (NAD 27)  
North American Datum of 1983 (NAD 83) is shown by dashed  
corner ticks. The values of the shift between NAD 27 and NAD 83  
for 7.5-minute intersections are obtainable from National  
Geodetic Survey NADCON software

PROVISIONAL MAP  
Produced from original  
manuscript drawings. Infor-  
mation shown as of date of  
field check.

SCALE 1:24 000  
1 000 0 1000 2000  
KILOMETERS  
1 000 0 1000 2000  
METERS  
1 000 0 1000 2000  
MILES  
1000 0 1000 2000 3000 4000 5000 6000 7000 8000 9000 10 000  
FEET  
CONTOUR INTERVAL 3 METERS  
CONTROL ELEVATIONS SHOWN TO THE NEAREST 0.1 METER  
OTHER ELEVATIONS SHOWN TO THE NEAREST 0.5 METER  
To convert meters to feet multiply by 3.2808  
To convert feet to meters multiply by .3048  
THIS MAP COMPLIES WITH NATIONAL MAP ACCURACY STANDARDS  
FOR SALE BY U.S. GEOLOGICAL SURVEY, P.O. BOX 25286, DENVER, COLORADO 80225  
AND ILLINOIS GEOLOGICAL SURVEY, CHAMPAIGN, ILLINOIS 61820



ADJOINING 7.5 QUADRANGLE NAMES			CONTOURS AND ELEVATIONS IN METERS		
1	2	3	1	2	3
4	5	6	4	5	6
7	8	9	7	8	9

ROAD LEGEND  
Improved Road.....  
Unimproved Road.....  
Trail.....  
Interstate Route..... U.S. Route..... State Route.....

NEPONSET, ILLINOIS  
PROVISIONAL EDITION 1994

JUL 20 1998

