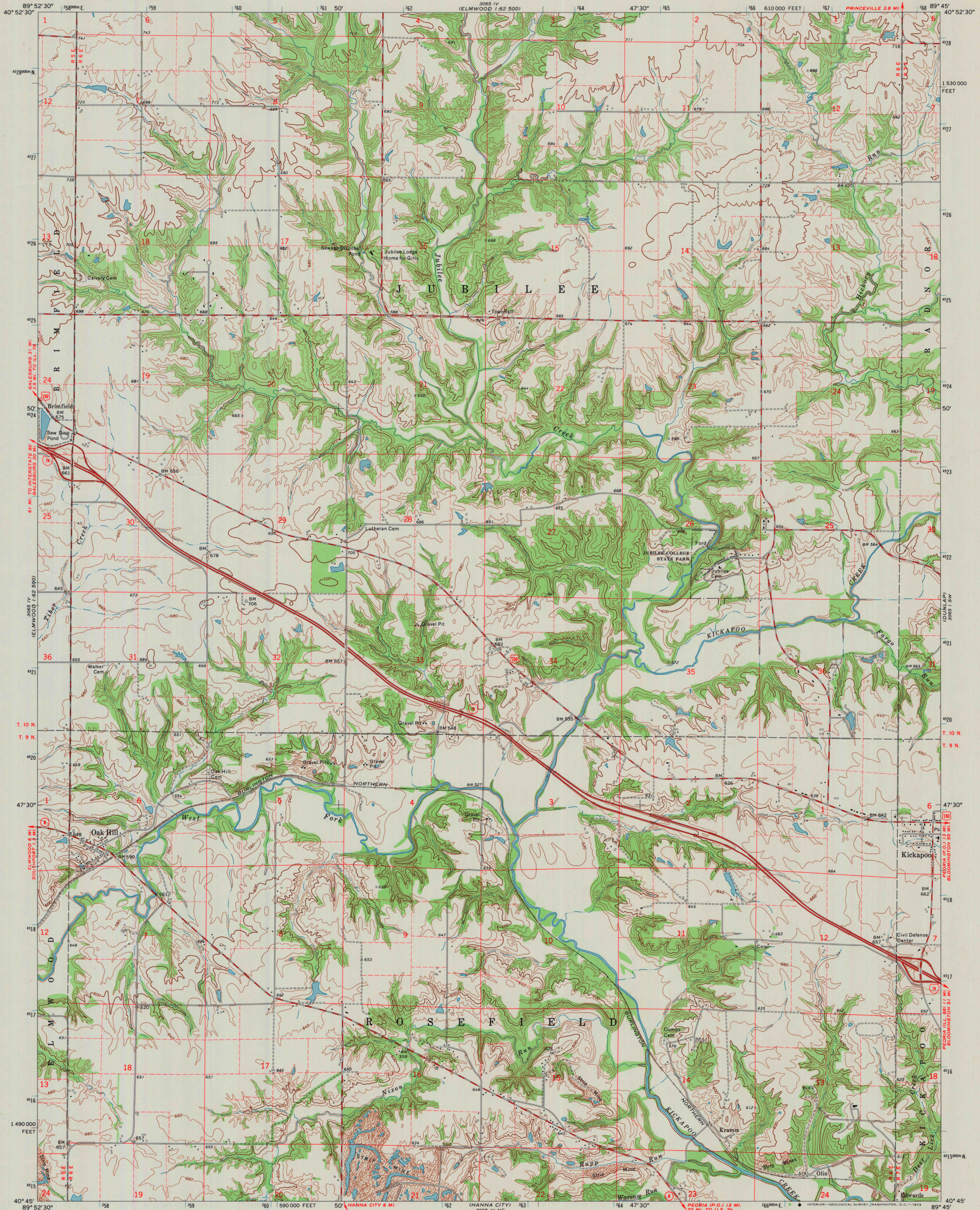
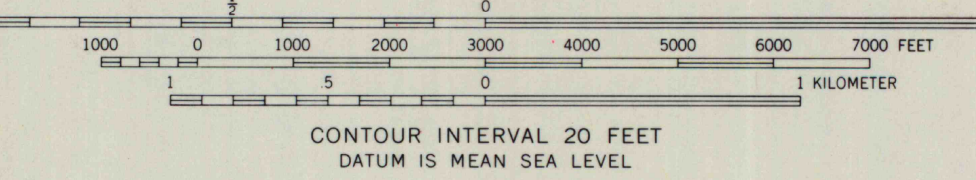
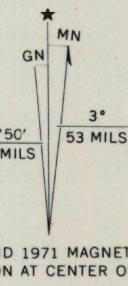


UNITED STATES
DEPARTMENT OF THE INTERIOR
GEOLOGICAL SURVEY

OAK HILL QUADRANGLE
ILLINOIS—PEORIA CO.
7.5 MINUTE SERIES (TOPOGRAPHIC)



Mapped, edited, and published by the Geological Survey
Control by USGS and USC&GS
Topography by photogrammetric methods from aerial
photographs taken 1969. Field checked 1971.
Polyconic projection, 1927 North American datum
10,000-foot grid based on Illinois coordinate system, west zone
1000-meter Universal Transverse Mercator grid ticks,
zone 16, shown in blue.
Fine red dashed lines indicate selected fence and field lines where
generally visible on aerial photographs. This information is unchecked



ROAD CLASSIFICATION

Primary highway, hard surface	Light-duty road, hard or improved surface
Secondary highway, hard surface	Unimproved road
Interstate Route	U. S. Route
	State Route

THIS MAP COMPLIES WITH NATIONAL MAP ACCURACY STANDARDS
FOR SALE BY U. S. GEOLOGICAL SURVEY, WASHINGTON, D. C. 20242
AND BY THE STATE GEOLOGICAL SURVEY, URBANA, ILLINOIS 61801
A FOLDER DESCRIBING TOPOGRAPHIC MAPS AND SYMBOLS IS AVAILABLE ON REQUEST



MAP AND AIR PHOTO
LIBRARY
APR 3 1973
University of Wisconsin

OAK HILL, ILL.
SE/4 ELMWOOD 15' QUADRANGLE
N4045-W8945/7.5
1971
AMS 3065 IV SE—SERIES V863