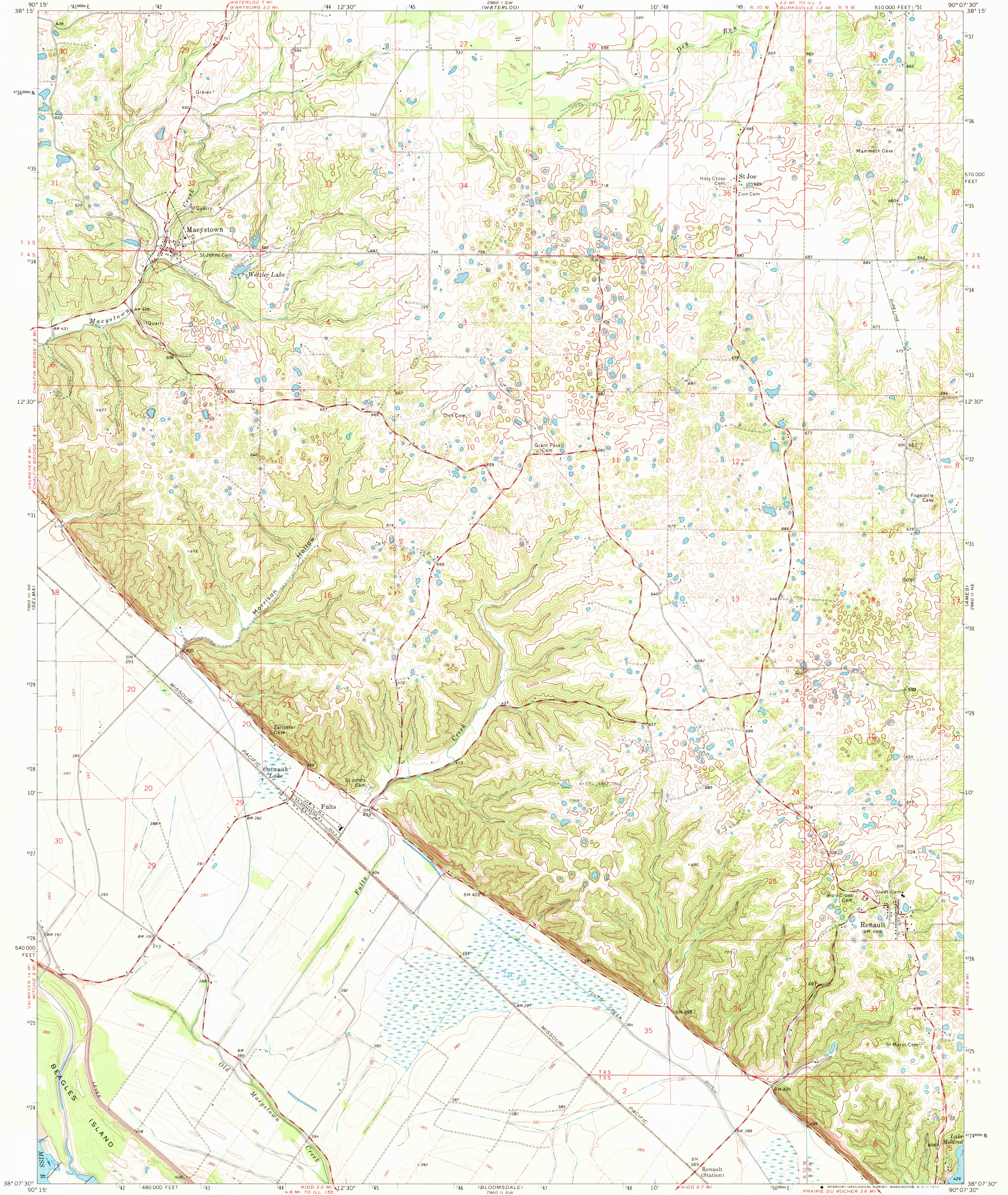
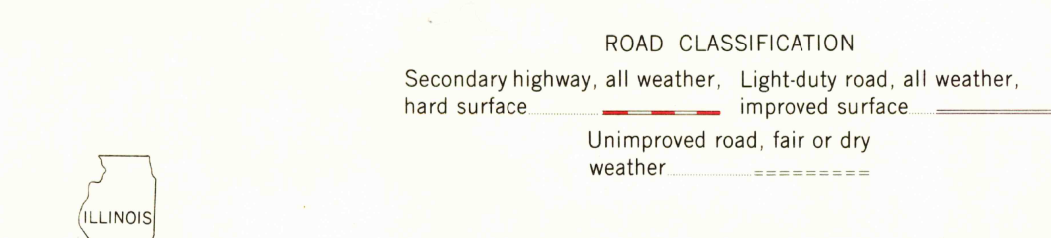
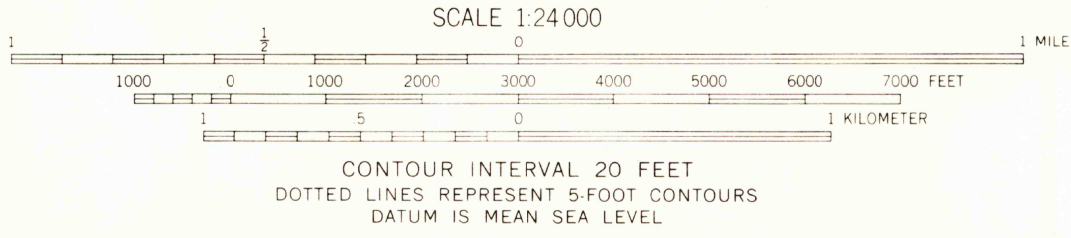
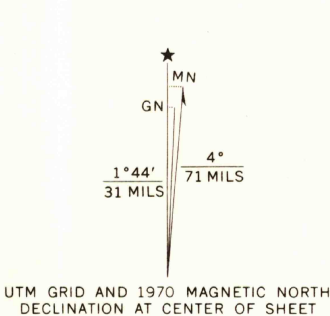


UNITED STATES
DEPARTMENT OF THE INTERIOR
GEOLOGICAL SURVEY

RENAULT QUADRANGLE
ILLINOIS-MONROE CO.
7.5 MINUTE SERIES (TOPOGRAPHIC)
NW 1/4 RENAULT 15' QUADRANGLE



Mapped, edited, and published by the Geological Survey
Control by USGS and USC&GS
Topography by photogrammetric methods from aerial
photographs taken 1968. Field checked 1970.
Polyconic projection. 1927 North American datum
10,000-foot grid based on Illinois coordinate system, west zone
1000-meter Universal Transverse Mercator grid ticks,
zone 15, shown in blue
Fine red dashed lines indicate selected fence and field lines where
generally visible on aerial photographs. This information is unchecked



THIS MAP COMPLIES WITH NATIONAL MAP ACCURACY STANDARDS
FOR SALE BY U. S. GEOLOGICAL SURVEY, WASHINGTON, D. C. 20242
AND BY THE STATE GEOLOGICAL SURVEY, URBANA, ILLINOIS 61801
A FOLDER DESCRIBING TOPOGRAPHIC MAPS AND SYMBOLS IS AVAILABLE ON REQUEST

RENAULT, ILL.
NW 1/4 RENAULT 15' QUADRANGLE
N3807.5-W9007.5/7.5

1970
AMS 2960 11 NW-SERIES V863

FEB 1 1972

USGS
HISTORICAL FILE
TOPOGRAPHIC DIVISION