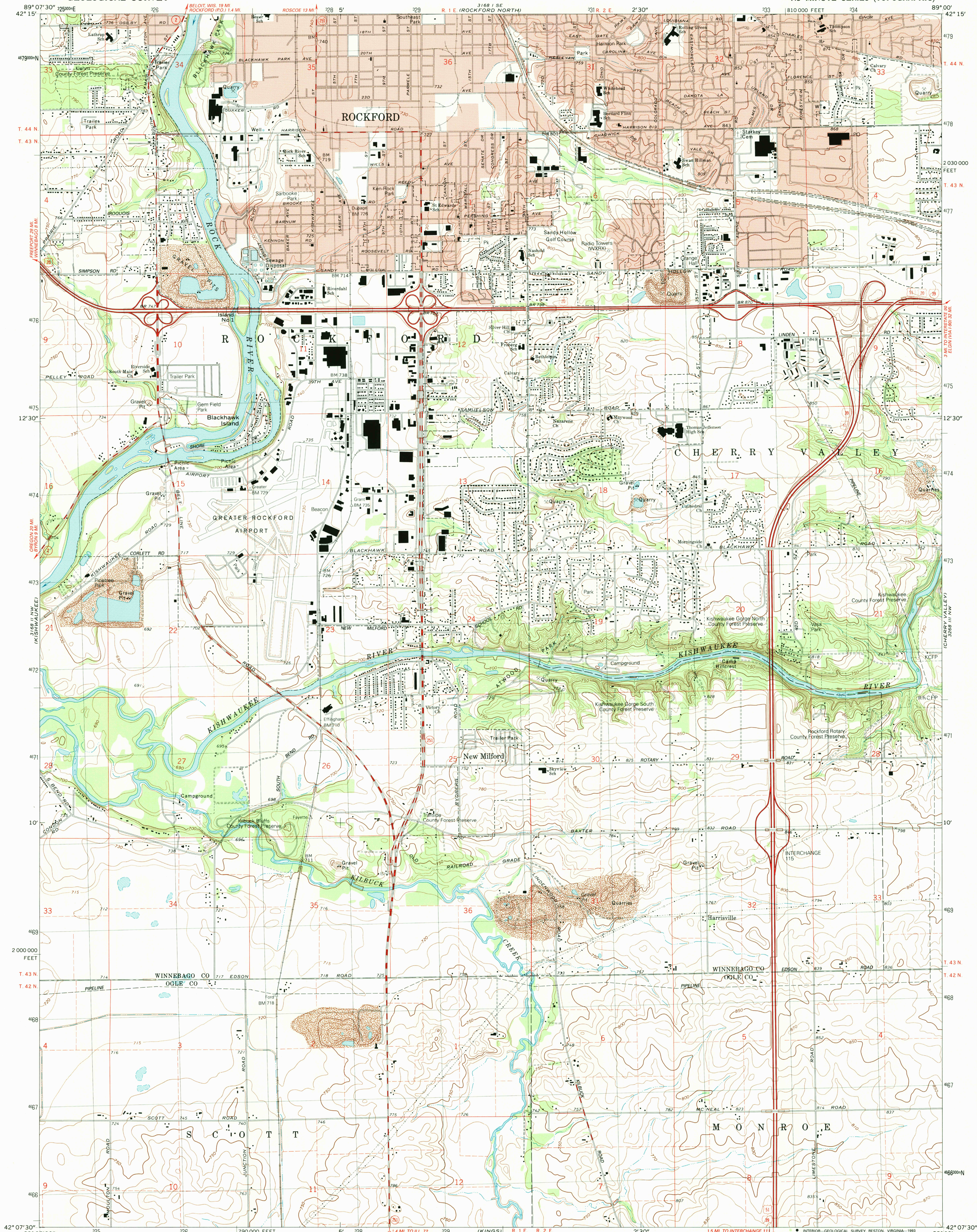
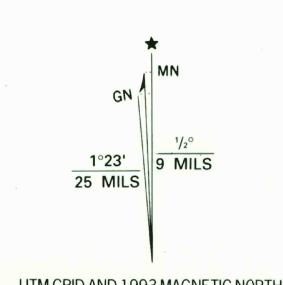


UNITED STATES  
DEPARTMENT OF THE INTERIOR  
GEOLOGICAL SURVEY

ROCKFORD SOUTH QUADRANGLE  
ILLINOIS  
7.5 MINUTE SERIES (TOPOGRAPHIC)



Produced by the United States Geological Survey  
in cooperation with State of Illinois agencies  
Control by USGS and NGS/NOAA  
Topography by photogrammetric methods from aerial photographs  
taken 1970. Field checked 1971. Revised from aerial photographs  
taken 1988. Field checked 1992. Map edited 1993  
Projection and 10,000-foot grid ticks: Illinois coordinate  
system, west zone (transverse Mercator)  
1000-meter Universal Transverse Mercator grid, zone 16  
1927 North American Datum (NAD 27)  
North American Datum of 1983 (NAD 83) is shown by dashed corner ticks  
The values of the shift between NAD 27 and NAD 83 for 7.5-minute  
intersections are given in USGS Bulletin 1875  
Red tint indicates areas in which only landmark buildings are shown  
Fine dashed lines indicate selected fence and field lines where  
generally visible on aerial photographs. This information is unchecked



SCALE 1:24 000  
CONTOUR INTERVAL 10 FEET  
SUPPLEMENTARY CONTOUR INTERVAL 5 FEET  
NATIONAL GEODETIC VERTICAL DATUM OF 1929



ROAD CLASSIFICATION  
Primary highway, hard surface  
Secondary highway, hard surface  
Light-duty road, hard or improved surface  
Unimproved road  
Interstate Route  
U.S. Route  
State Route

THIS MAP COMPLIES WITH NATIONAL MAP ACCURACY STANDARDS  
FOR SALE BY U.S. GEOLOGICAL SURVEY, DENVER, COLORADO 80225, OR RESTON, VIRGINIA 22092  
AND ILLINOIS GEOLOGICAL SURVEY, CHAMPAIGN, ILLINOIS 61820  
A FOLDER DESCRIBING TOPOGRAPHIC MAPS AND SYMBOLS IS AVAILABLE ON REQUEST

ROCKFORD SOUTH, ILL.  
42089-B1-TF-024  
1993  
DMA 3168 II NE-SERIES V863

