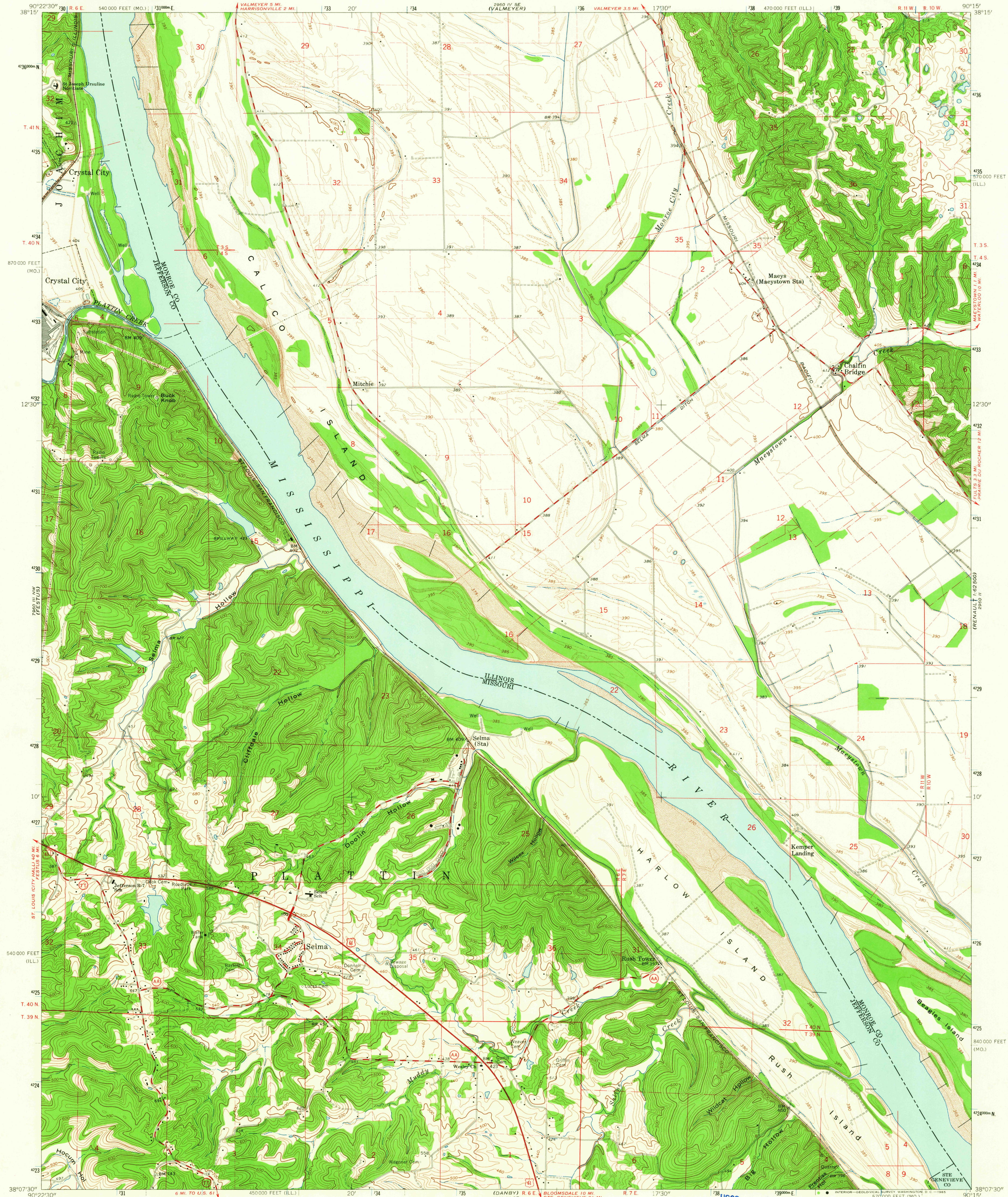
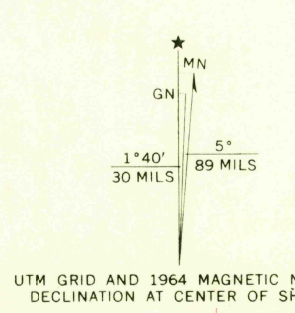


UNITED STATES  
DEPARTMENT OF THE INTERIOR  
GEOLOGICAL SURVEY

SELMA QUADRANGLE  
ILLINOIS-MISSOURI  
7.5 MINUTE SERIES (TOPOGRAPHIC)  
NE 1/4 CRYSTAL CITY 15' QUADRANGLE



Mapped, edited, and published by the Geological Survey Missouri area mapped in cooperation with Missouri Geological Survey  
Control by USGS, USC&GS, and USCE  
Topography by photogrammetric methods from aerial photographs taken 1962 and planetable surveys 1964  
Polyconic projection, 1927 North American datum 10,000-foot grids based on Illinois coordinate system, west zone and Missouri coordinate system, east zone  
1000-meter Universal Transverse Mercator grid ticks, zone 15, shown in blue  
Fine red dashed lines indicate selected fence and field lines where generally visible on aerial photographs. This information is unchecked



THIS MAP COMPLIES WITH NATIONAL MAP ACCURACY STANDARDS  
FOR SALE BY U.S. GEOLOGICAL SURVEY, DENVER 25, COLORADO OR WASHINGTON 25, D. C.  
THE STATE GEOLOGICAL SURVEY, URBANA, ILLINOIS  
AND BY THE MISSOURI GEOLOGICAL SURVEY, ROLLA, MISSOURI  
A FOLDER DESCRIBING TOPOGRAPHIC MAPS AND SYMBOLS IS AVAILABLE ON REQUEST

USGS  
Historical File  
Topographic Division



ROAD CLASSIFICATION  
Heavy-duty ——— Light-duty ———  
Medium-duty ——— Unimproved dirt ———  
U.S. Route ——— State Route ———

U.S.G.S.  
FILE COPY  
TOPOGRAPHIC DIVISION

SELMA, ILL.-MO.  
NE 1/4 CRYSTAL CITY 15' QUADRANGLE  
N3807.5-W9015.7.5  
1964  
AMS 7960 III NE-SERIES V879

3075  
JAN 4 1965