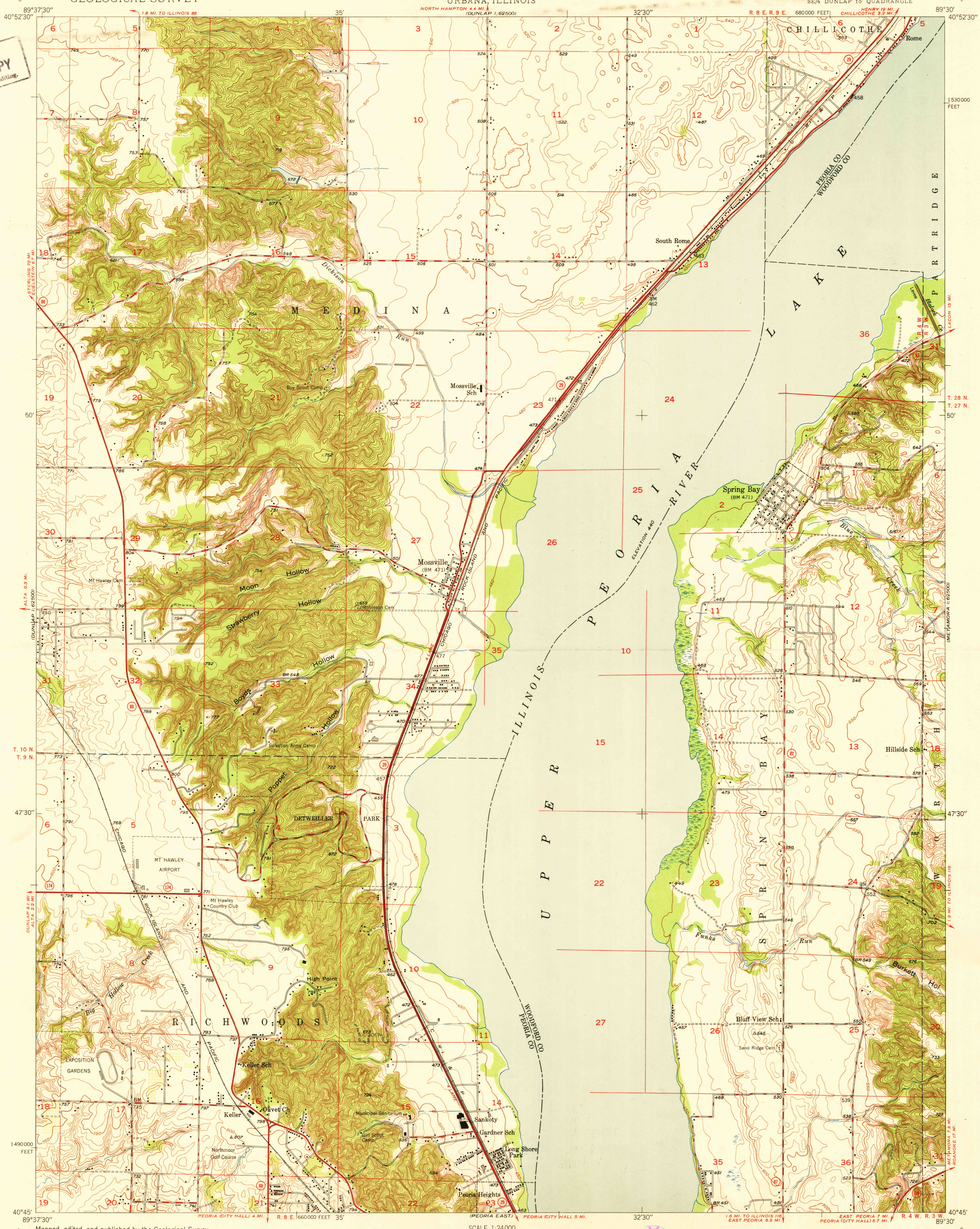
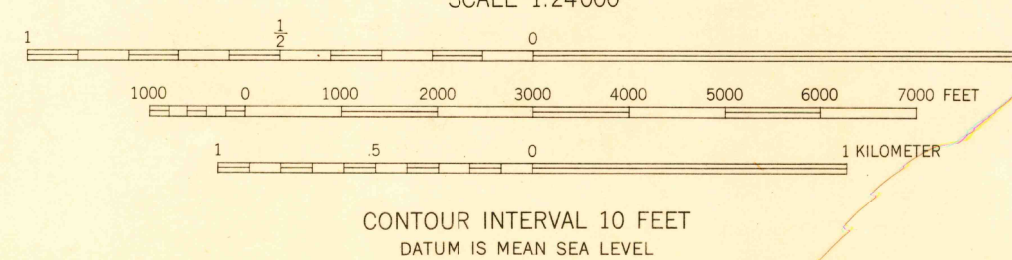


U.S.G.S.
FILE COPY
Inspection and Editing



U.S.G.S.
FILE COPY
Inspection and Editing

Mapped, edited, and published by the Geological Survey
Control by USGS and USC&GS
Topography by multiplex methods from aerial photographs
taken 1946, and by plane-table surveys 1948-1949
Field check 1948-1949
Polyconic projection. 1927 North American datum
10,000-foot grid based on Illinois coordinate system,
west zone



USGS
Historical File
Topographic Division

ROAD CLASSIFICATION
HARD-SURFACE ALL WEATHER ROADS DRY WEATHER ROADS
Heavy-duty **4 LANE 8 LANE** Improved dirt
Medium-duty **4 LANE 6 LANE** Unimproved dirt
Loose-surface, graded, or narrow hard-surface
U. S. Route State Route

U.S.G.S.
FILE COPY
Inspection and Editing

SPRING BAY, ILL.
SE/4 DUNLAP 15' QUADRANGLE
N4045-W8930/7.5
EDITION OF 1950

THIS MAP COMPLIES WITH NATIONAL MAP ACCURACY STANDARDS
FOR SALE BY U. S. GEOLOGICAL SURVEY, WASHINGTON 25, D. C.
AND BY THE STATE GEOLOGICAL SURVEY, URBANA, ILLINOIS
A FOLDER DESCRIBING TOPOGRAPHIC MAPS AND SYMBOLS IS AVAILABLE ON REQUEST