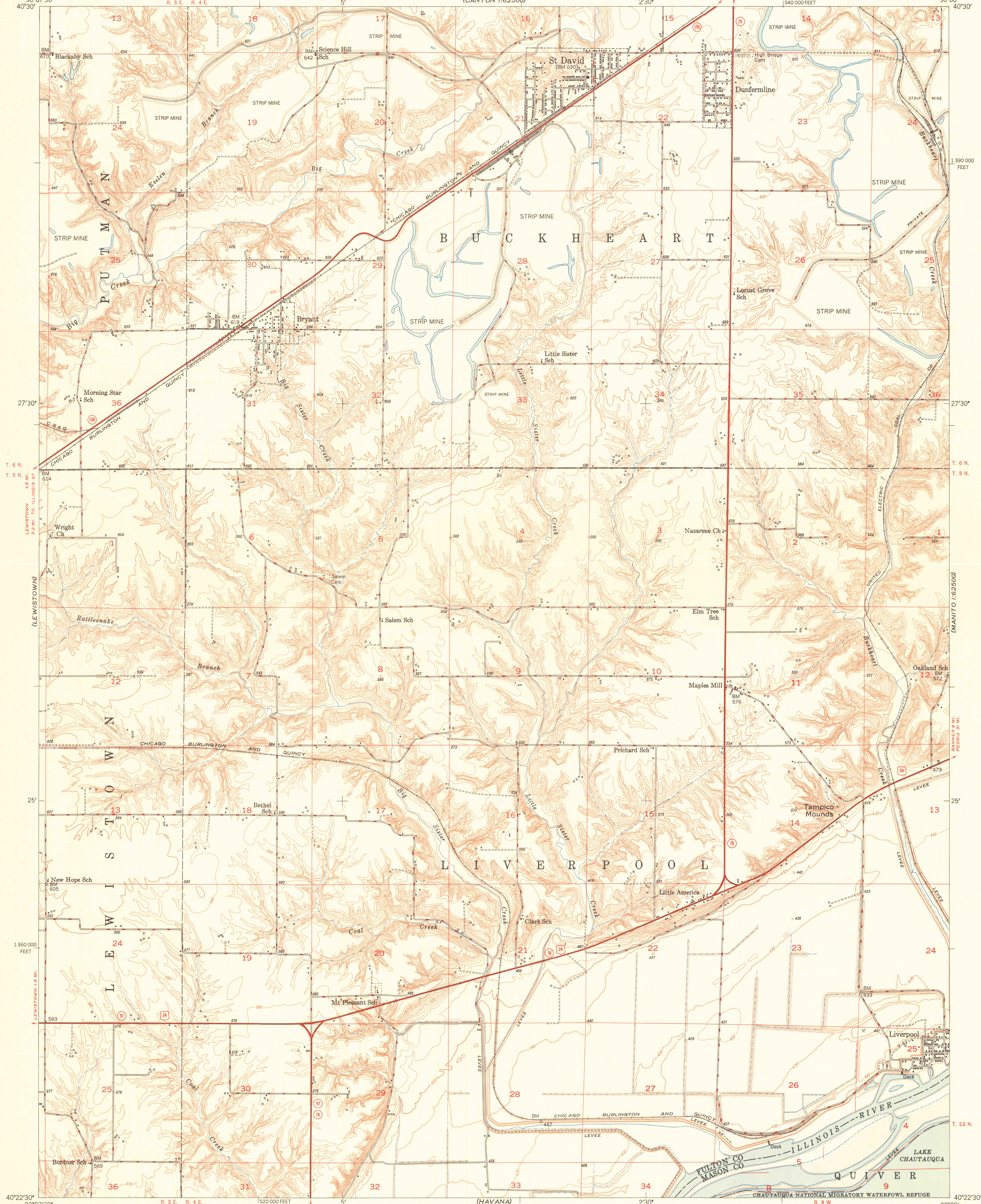
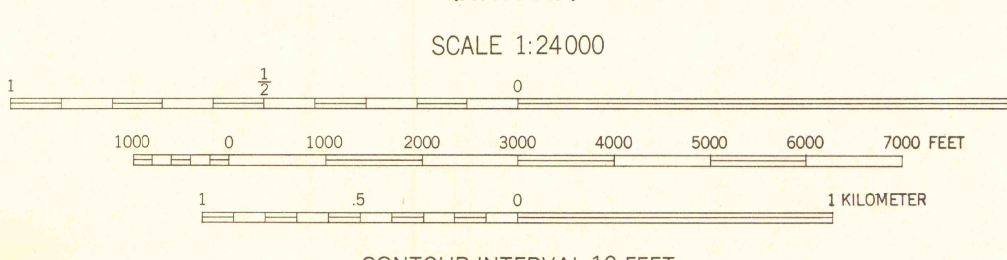


(CANTON 1:62500)
90°07'30"
40°30'

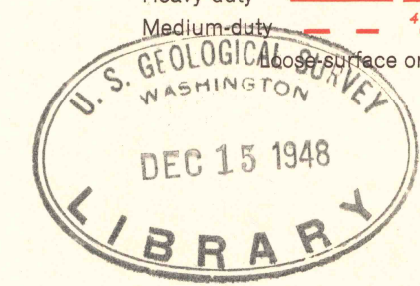
(GLASFORD 1:62500)
90°00'
40°30'



Mapped, edited, and published by the Geological Survey
Control by USC&GS and USGS
Topography from aerial photographs by multiplex methods
and by plane-table surveys 1947
Aerial photographs taken 1946
Polyconic projection, 1927 North American Datum
10,000 foot grid based on Illinois Coordinate System,
West Zone



ROAD CLASSIFICATION
HARD-SURFACE ALL WEATHER ROADS DRY WEATHER ROADS
Heavy-duty 4 LANE 16 LANE Improved dirt
Medium-duty 4 LANE 16 LANE Unimproved dirt
Surface or narrow hard-surface



ST. DAVID, ILL.
N4022.5-W9000/7.5
PRINTED 1948