

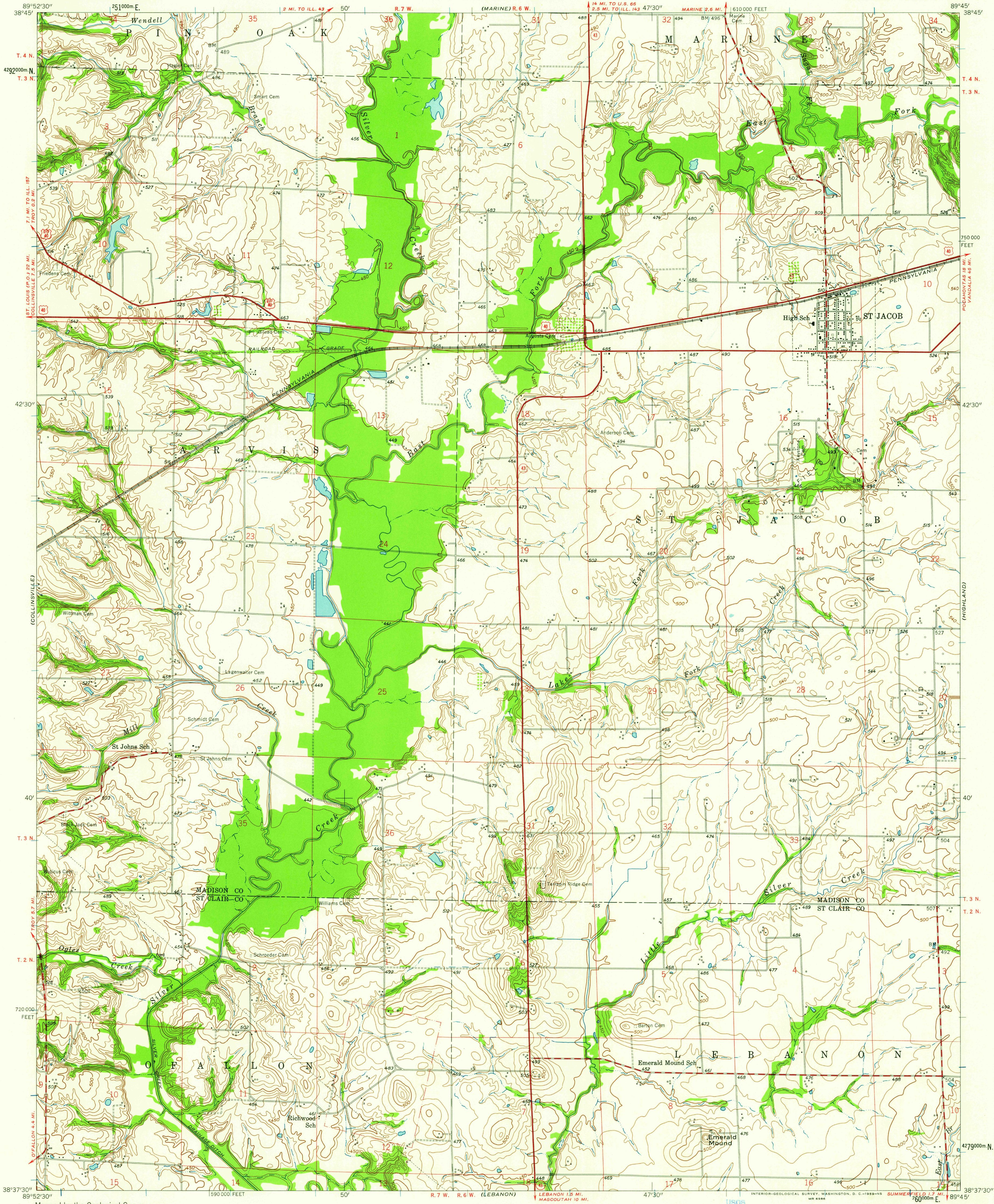
(EDWARDSVILLE)

(NEW DOUGLAS 1:62,500)

UNITED STATES
DEPARTMENT OF THE INTERIOR
GEOLOGICAL SURVEY

STATE OF ILLINOIS
DEPARTMENT OF REGISTRATION AND EDUCATION
GEOLOGICAL SURVEY DIVISION

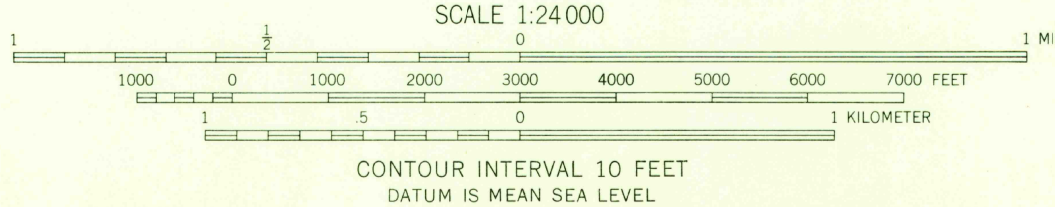
ST. JACOB QUADRANGLE
ILLINOIS
7.5 MINUTE SERIES (TOPOGRAPHIC)
NE 1/4 BELLEVILLE 15' QUADRANGLE



Mapped by the Geological Survey
Revised by the Army Map Service
Published for civil use by the Geological Survey
Control by USGS and USC&GS

Culture and drainage in part compiled from aerial photographs
taken 1946. Topography from planetable surveys by the
Geological Survey 1948. Planimetric detail revised from
aerial photographs taken 1952. Field check 1954
Polyconic projection. 1927 North American datum
10,000-foot grid based on Illinois coordinate system, west zone
1000-meter Universal Transverse Mercator grid ticks, zone 16,
shown in blue

TRUE NORTH
MAGNETIC NORTH
APPROXIMATE MEAN
DECLINATION, 1954



THIS MAP COMPLIES WITH NATIONAL MAP ACCURACY STANDARDS
FOR SALE BY U. S. GEOLOGICAL SURVEY, WASHINGTON 25, D. C.
AND BY THE STATE GEOLOGICAL SURVEY, URBANA, ILLINOIS
A FOLDER DESCRIBING TOPOGRAPHIC MAPS AND SYMBOLS IS AVAILABLE ON REQUEST

USGS
Historical File
Topographic Division

ROAD CLASSIFICATION
Heavy-duty ——— Light-duty ———
Medium-duty ——— Unimproved dirt ———
U. S. Route ——— State Route ———



U.S.G.S.
FILE COPY
TOPOGRAPHIC DIVISION

ST. JACOB, ILL.
NE 1/4 BELLEVILLE 15' QUADRANGLE
N 3837.5-W 8945.7/5

1954

JUN 3 - 1959