

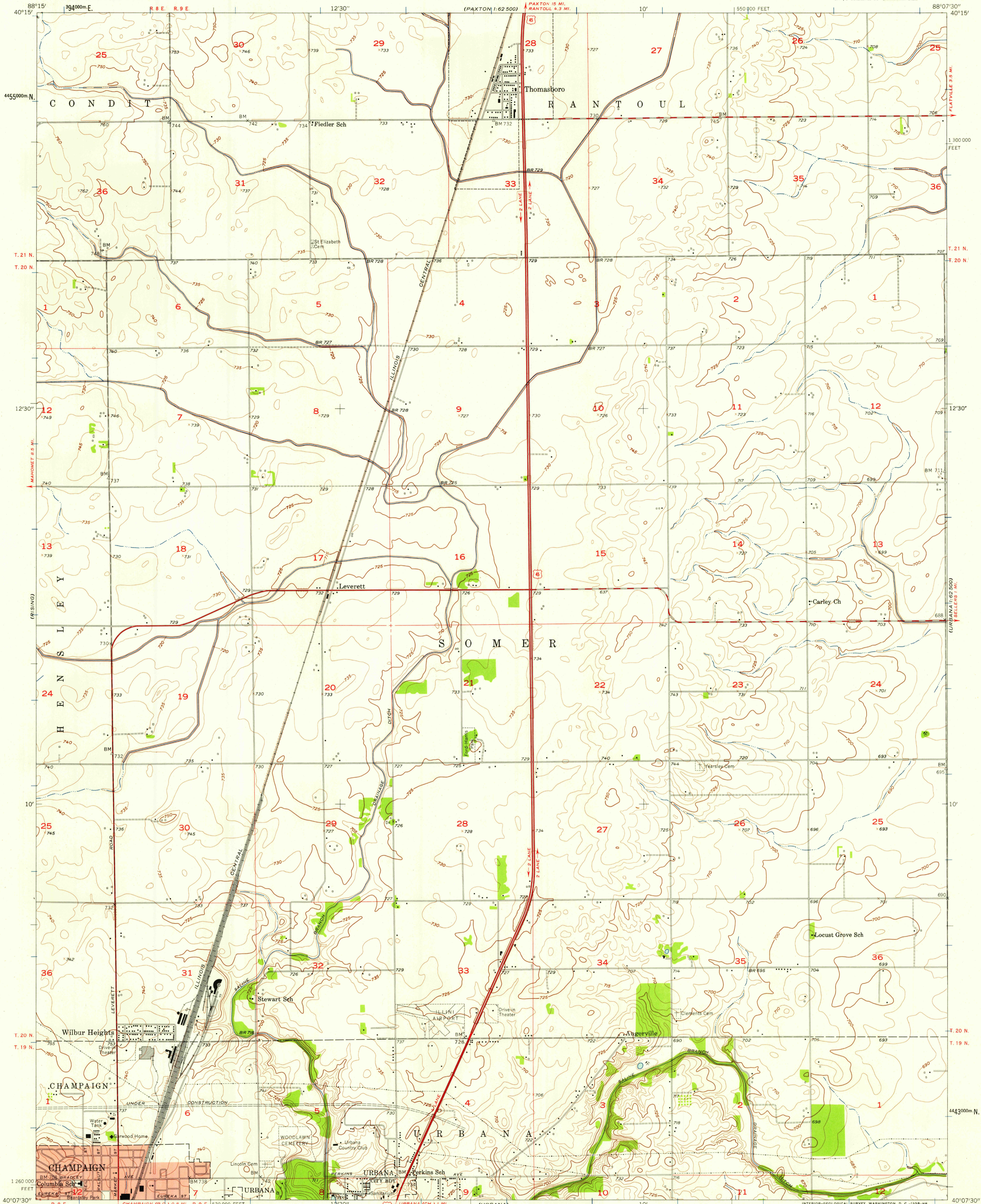
GRASSON CITY 1:62,500

PAXTON 1:62,500

UNITED STATES
DEPARTMENT OF THE INTERIOR
GEOLOGICAL SURVEY

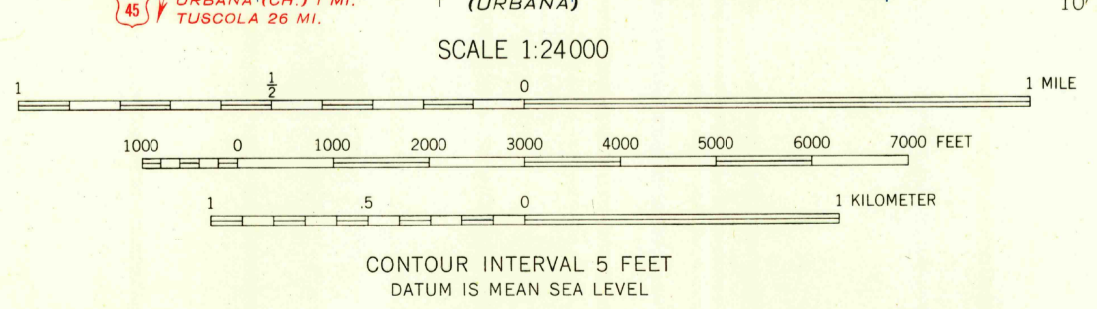
STATE OF ILLINOIS
WILLIAM G. STRATTON, GOVERNOR
DEPARTMENT OF REGISTRATION AND EDUCATION
VERA M. BINKS, DIRECTOR
GEOLOGICAL SURVEY DIVISION, JOHN C. FRYE, CHIEF
URBANA, ILLINOIS

THOMASBORO QUADRANGLE
ILLINOIS—CHAMPAIGN CO.
7.5 MINUTE SERIES (TOPOGRAPHIC)
NW/4 URBANA 15' QUADRANGLE



Mapped, edited, and published by the Geological Survey
Control by USGS and USC&GS
Culture and drainage in part compiled from aerial photographs
taken 1955. Topography by planetable surveys 1949-1950 and 1957
Polyconic projection. 1927 North American datum
10,000-foot grid based on Illinois coordinate system, east zone
1000-meter Universal Transverse Mercator grid ticks,
zone 16, shown in blue
Red tint indicates area in which only
landmark buildings are shown

TRUE NORTH
MAGNETIC NORTH
APPROXIMATE MEAN
DECLINATION, 1957



USGS
Historical File
Topographic Division

ROAD CLASSIFICATION
Heavy-duty ——— Light-duty ———
Medium-duty ——— Unimproved dirt - - - - -
U.S. Route



U.S.G.S.
FILE COPY
TOPOGRAPHIC DIVISION

THOMASBORO, ILL.
NW/4 URBANA 15' QUADRANGLE
N 40° 7.5' - W 88° 07.5' 7.5

1957

APR 23 1958
2880

THIS MAP COMPLIES WITH NATIONAL MAP ACCURACY STANDARDS
FOR SALE BY U. S. GEOLOGICAL SURVEY, WASHINGTON 25, D. C.
AND BY THE STATE GEOLOGICAL SURVEY, URBANA, ILLINOIS
A FOLDER DESCRIBING TOPOGRAPHIC MAPS AND SYMBOLS IS AVAILABLE ON REQUEST