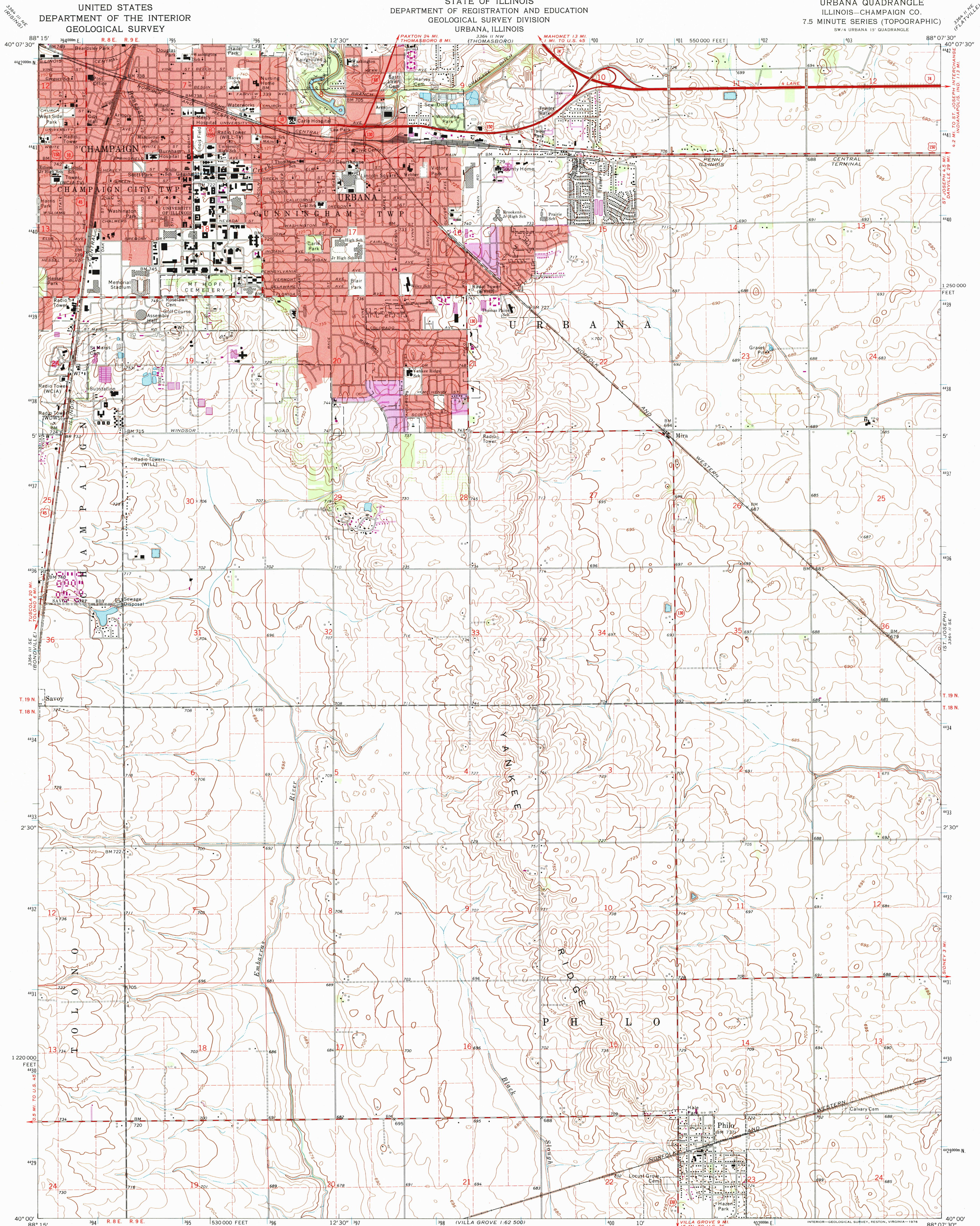


UNITED STATES  
DEPARTMENT OF THE INTERIOR  
GEOLOGICAL SURVEY

STATE OF ILLINOIS  
DEPARTMENT OF REGISTRATION AND EDUCATION  
GEOLOGICAL SURVEY DIVISION  
URBANA, ILLINOIS

URBANA QUADRANGLE  
ILLINOIS—CHAMPAIGN CO.  
7.5 MINUTE SERIES (TOPOGRAPHIC)  
SW/4 URBANA 15' QUADRANGLE



Mapped, edited, and published by the Geological Survey  
Control by USGS and USC&GS

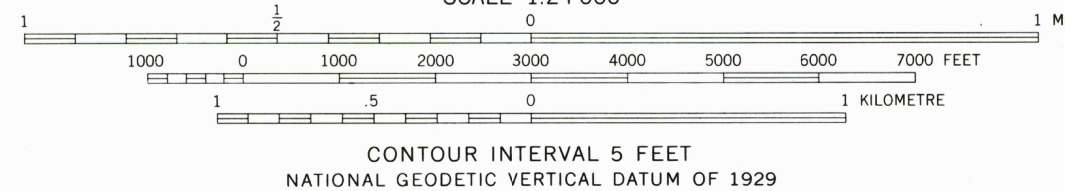
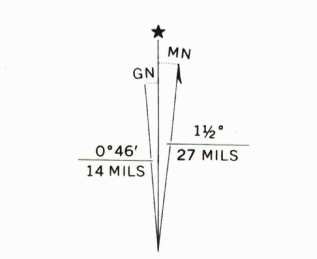
Planimetry by photogrammetric methods from aerial photographs  
taken 1955. Topography by planimetric surveys 1949-50 and 1957  
Revised from aerial photographs taken 1969. Field checked 1970

Polyconic projection. 1927 North American datum  
10,000-foot grid based on Illinois coordinate system, east zone  
1000-metre Universal Transverse Mercator grid ticks,  
zone 16, shown in blue

Red tint indicates area in which only landmark buildings are shown  
Fine red dashed lines indicate selected fence and field lines where  
generally visible on aerial photographs. This information is unchecked

Revisions shown in purple compiled from aerial photographs  
taken 1975. This information not field checked

Purple tint indicates extension of urban areas



THIS MAP COMPLIES WITH NATIONAL MAP ACCURACY STANDARDS  
FOR SALE BY U. S. GEOLOGICAL SURVEY, RESTON, VIRGINIA 22092  
AND BY THE STATE GEOLOGICAL SURVEY, URBANA, ILLINOIS 61801  
A FOLDER DESCRIBING TOPOGRAPHIC MAPS AND SYMBOLS IS AVAILABLE ON REQUEST

ROAD CLASSIFICATION  
Primary highway, all weather, hard surface  
Secondary highway, all weather, hard surface  
Interstate Route  
U. S. Route  
State Route  
Light-duty road, all weather, improved surface  
Unimproved road, fair or dry weather  
Interstate Route  
U. S. Route  
State Route



URBANA, ILL.  
SW/4 URBANA 15' QUADRANGLE  
N4000—W8807.5/7.5  
1970  
PHOTOREVISED 1975  
AMS 3364 II SW—SERIES V863

