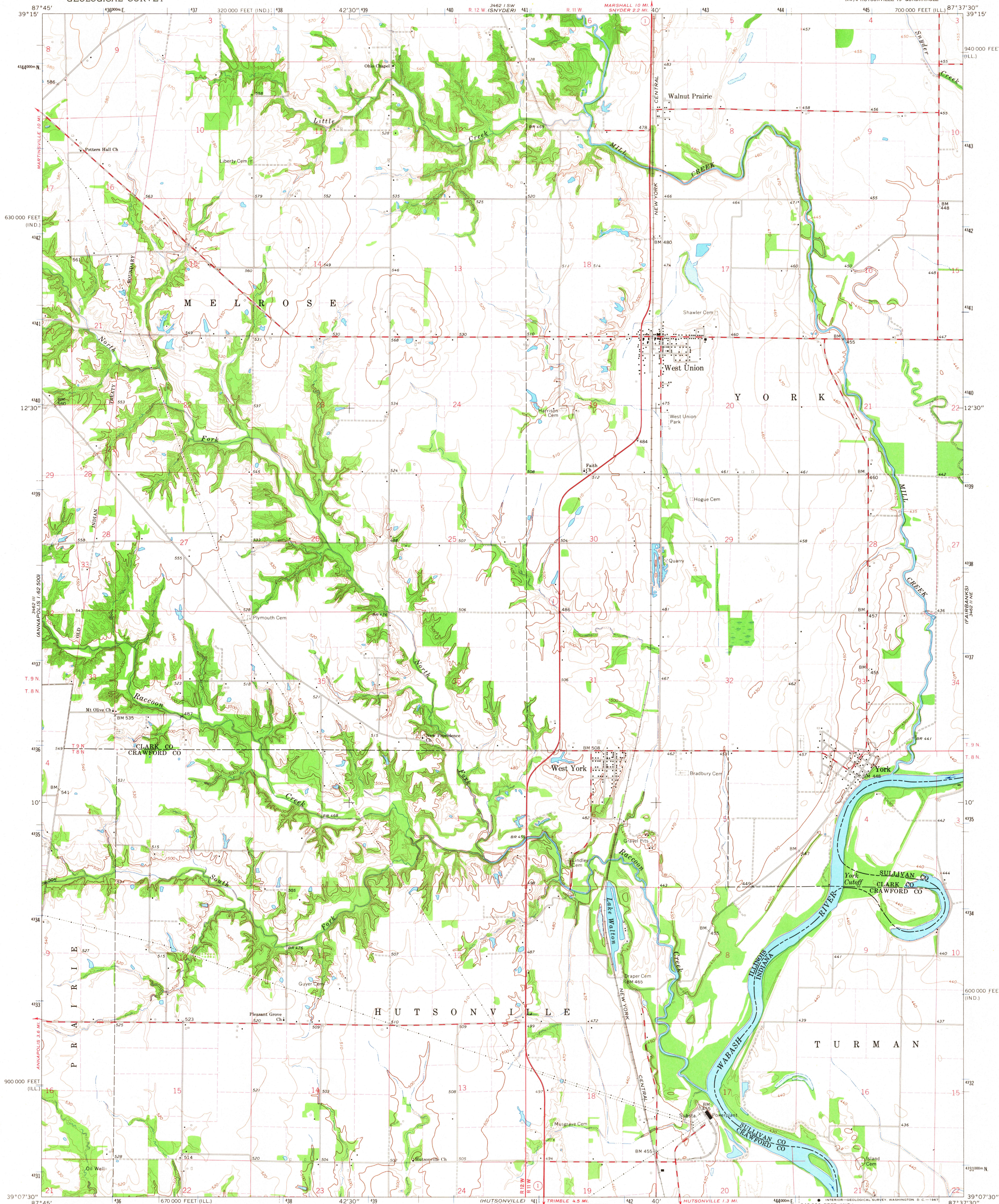


UNITED STATES
DEPARTMENT OF THE INTERIOR
GEOLOGICAL SURVEY

WEST UNION QUADRANGLE
ILLINOIS-INDIANA
7.5 MINUTE SERIES (TOPOGRAPHIC)
NW/4 HUTSONVILLE 15' QUADRANGLE



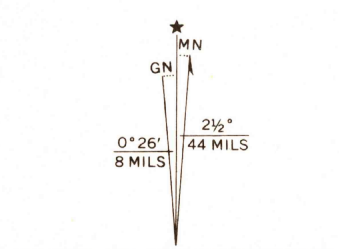
Maped, edited, and published by the Geological Survey
Indiana area mapped in cooperation with Indiana
Department of Natural Resources

Control by USGS, USC&GS, and USCE

Topography of Illinois area by photogrammetric methods
from aerial photographs taken 1964 and planetable surveys 1966
Planimetry of Indiana area by photogrammetric methods from
aerial photographs taken 1964. Topography by planetable surveys
1940. Revised 1966

Polyconic projection. 1927 North American datum
10,000-foot grids based on Illinois coordinate system, east zone
and Indiana coordinate system, west zone
1000-meter Universal Transverse Mercator grid ticks,
zone 16, shown in blue

Fine red dashed lines indicate selected fence and field lines where
generally visible on aerial photographs. This information is unchecked



CONTOUR INTERVAL 10 FEET
DOTTED LINES REPRESENT 5-FOOT CONTOURS
DATUM IS MEAN SEA LEVEL

THIS MAP COMPLIES WITH NATIONAL MAP ACCURACY STANDARDS
FOR SALE BY U. S. GEOLOGICAL SURVEY, WASHINGTON, D. C. 20242,
STATE GEOLOGICAL SURVEY, URBANA, ILLINOIS 61801,
AND INDIANA DEPARTMENT OF NATURAL RESOURCES, INDIANAPOLIS, INDIANA 46204
A FOLDER DESCRIBING TOPOGRAPHIC MAPS AND SYMBOLS IS AVAILABLE ON REQUEST

USGS
Historical File
Topographic Division



ROAD CLASSIFICATION
Heavy-duty ——— Light-duty ———
Medium-duty ——— Unimproved dirt ———
○ State Route

WEST UNION, ILL.-IND.
NW/4 HUTSONVILLE 15' QUADRANGLE
N3907.5-W8737.5/7.5

1966

AMS 3462 II NW-SERIES V853

3235
FEB 6 1968