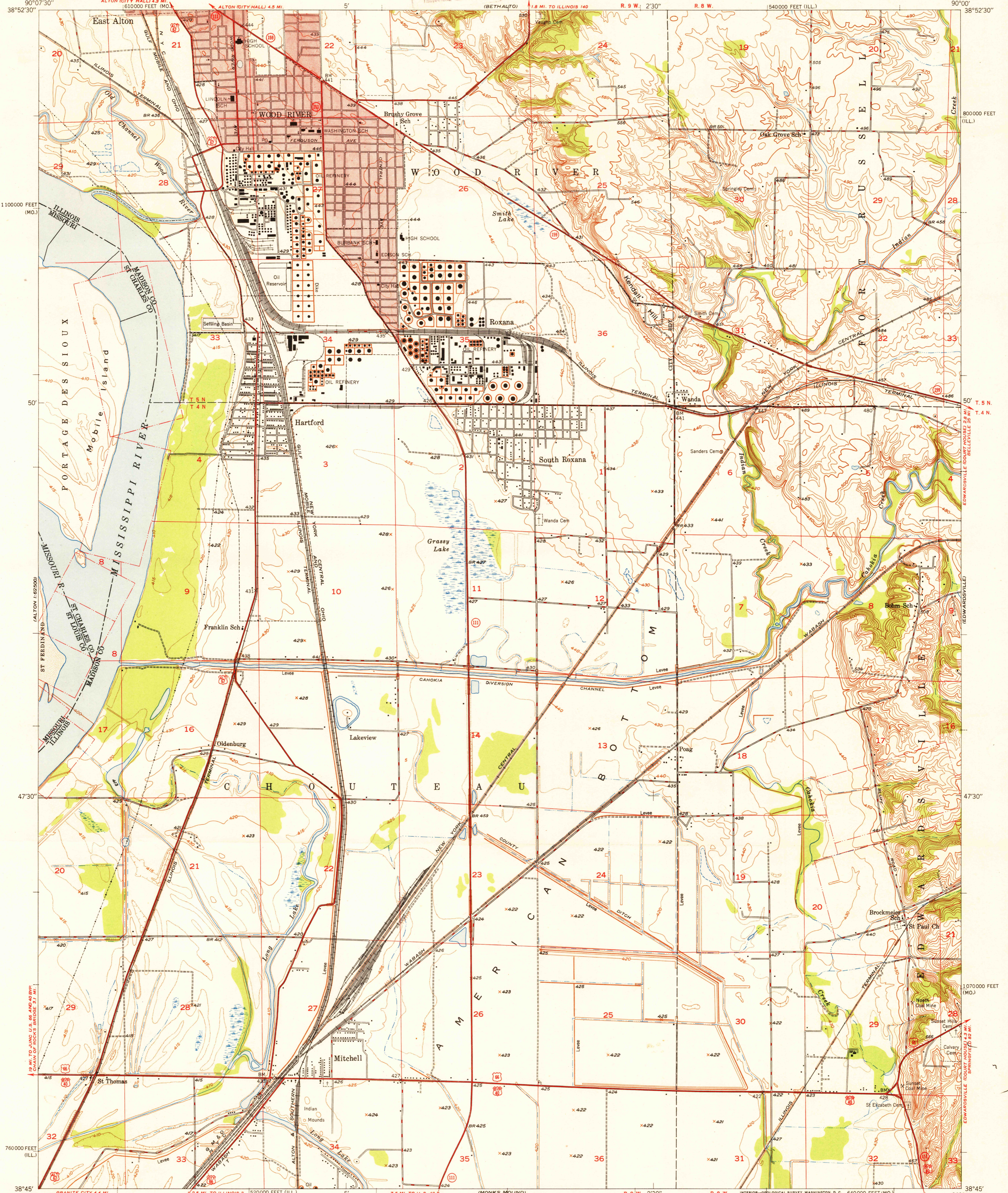


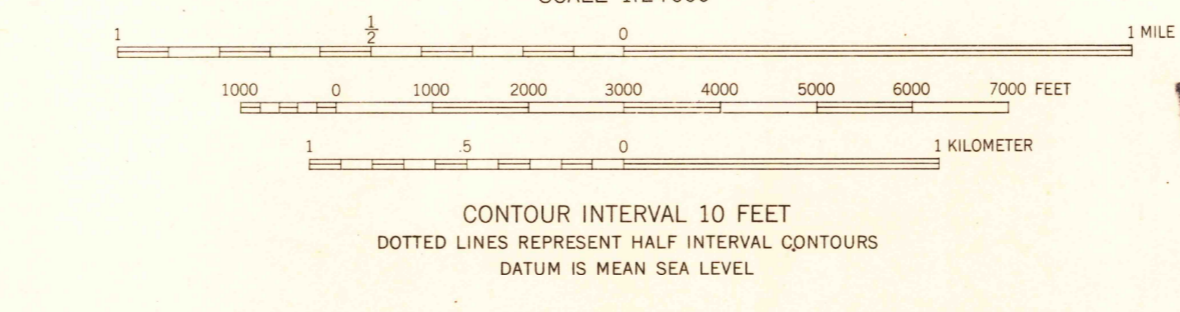
FILE COPY



Mapped, edited, and published by the Geological Survey

Control by Mississippi River Commission, USGS and USC&GS  
Topography by multiplex methods from aerial photographs taken 1945, by plane-table surveys 1947-1948 and in part by Corps of Engineers, U. S. Army. Field check 1947-1948  
Polyconic projection. 1927 North American datum 10,000-foot grids based on Illinois coordinate system, west zone, and Missouri coordinate system, east zone  
Red tint indicates area in which only landmark buildings are shown

TRUE NORTH  
MAGNETIC NORTH  
APPROXIMATE MEAN DECLINATION, 1948



U.S.G.S. FILE COPY  
Historical File  
Topographic Division

ROAD CLASSIFICATION  
HARD-SURFACE ALL WEATHER ROADS DRY WEATHER ROADS  
Heavy-duty... **LANE IS LANE** Improved dirt...  
Medium-duty... **LANE IS LANE** Unimproved dirt...  
Loose-surface, graded, or narrow hard-surface...  
U. S. Route  
State Route

WOOD RIVER, ILL.-MO.  
SE/4 ALTON 15' QUADRANGLE  
N3845-W9000/7.5  
EDITION OF 1951

THIS MAP COMPLIES WITH NATIONAL MAP ACCURACY STANDARDS  
FOR SALE BY U. S. GEOLOGICAL SURVEY, FEDERAL CENTER, DENVER, COLORADO OR WASHINGTON 25 D. C.  
BY THE STATE GEOLOGICAL SURVEY, URBANA, ILLINOIS,  
AND BY THE MISSOURI GEOLOGICAL SURVEY, ROLLA, MISSOURI  
A FOLDER DESCRIBING TOPOGRAPHIC MAPS AND SYMBOLS IS AVAILABLE ON REQUEST

FEB 13 1951 3225