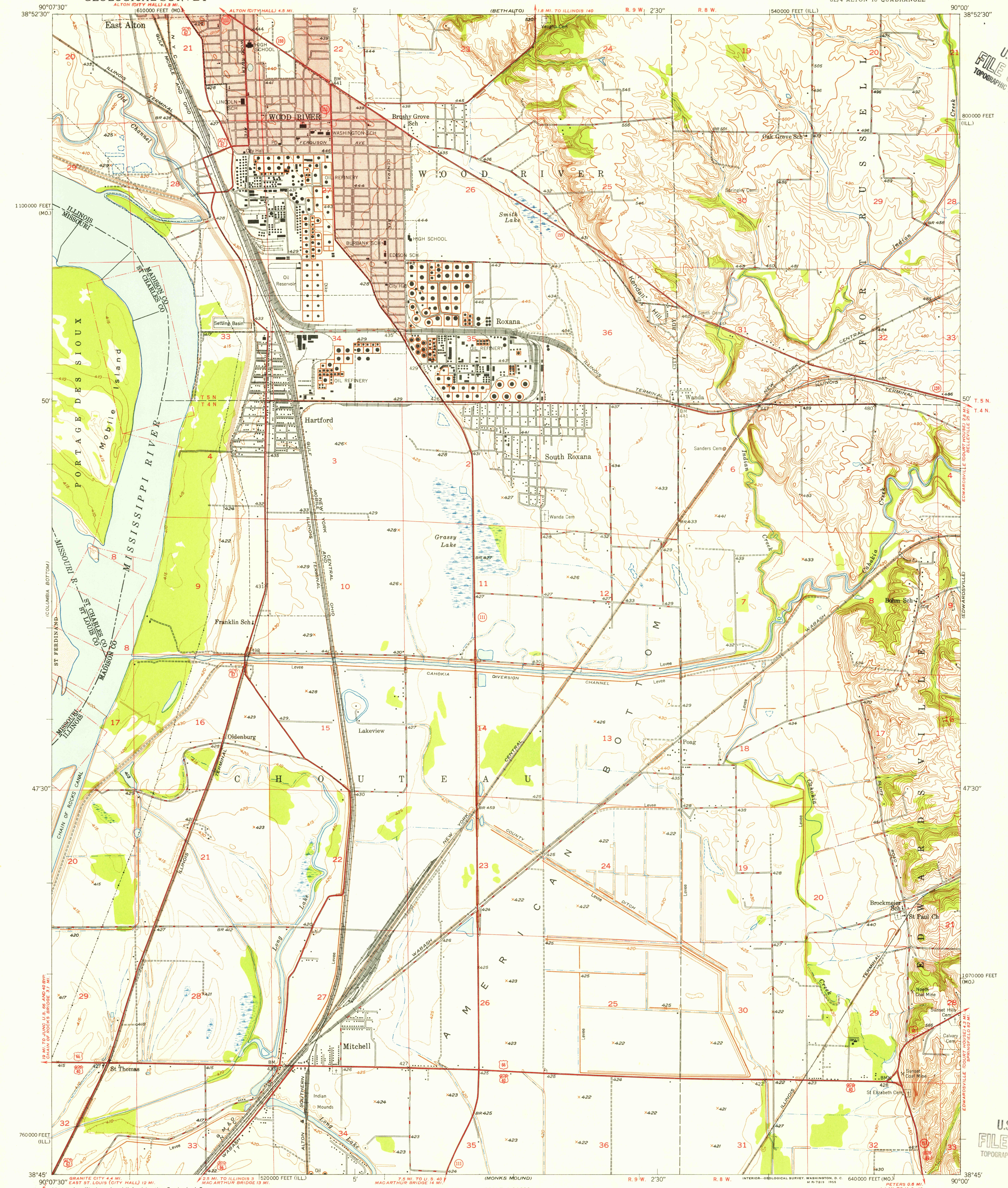


U.S.G.S.  
FILE COPY  
TOPOGRAPHIC DIVISION



U.S.G.S.  
FILE COPY  
TOPOGRAPHIC DIVISION

Maped, edited, and published by the Geological Survey  
Control by Mississippi River Commission,  
USGS and USC&GS  
Topography by multiplex methods from aerial photographs  
taken 1945, by plane-table surveys 1947-1948 and in part  
by Corps of Engineers, U. S. Army. Field check 1947-1948  
Polyconic projection. 1927 North American datum  
10,000-foot grids based on Illinois coordinate system,  
west zone, and Missouri coordinate system, east zone  
Red tint indicates area in which only  
landmark buildings are shown

TRUE NORTH  
MAGNETIC NORTH  
APPROXIMATE MEAN  
DECLINATION, 1948

SCALE 1:24000  
1 0 1000 2000 3000 4000 5000 6000 7000 FEET  
1 0 1 2 3 4 5 6 7 8 9 10 KILOMETER  
CONTOUR INTERVAL 10 FEET  
DOTTED LINES REPRESENT HALF INTERVAL CONTOURS  
DATUM IS MEAN SEA LEVEL

USGS  
Historical File  
Topographic Division

ROAD CLASSIFICATION  
HARD-SURFACE ALL WEATHER ROADS DRY WEATHER ROADS  
Heavy-duty... 2 LANE 16 LANE Improved dirt...  
Medium-duty... 2 LANE 16 LANE Unimproved dirt...  
Loose-surface, graded, or narrow hard-surface...  
U. S. Route State Route

WOOD RIVER, ILL.-MO.  
SE/4 ALTON 15' QUADRANGLE  
N3845-W9000/7.5

THIS MAP COMPLIES WITH NATIONAL MAP ACCURACY STANDARDS  
FOR SALE BY U. S. GEOLOGICAL SURVEY, FEDERAL CENTER, DENVER, COLORADO OR WASHINGTON 25, D. C.  
BY THE STATE GEOLOGICAL SURVEY, URBANA, ILLINOIS,  
AND BY THE MISSOURI GEOLOGICAL SURVEY, ROLLA, MISSOURI  
A FOLDER DESCRIBING TOPOGRAPHIC MAPS AND SYMBOLS IS AVAILABLE ON REQUEST

1948  
MINOR CORRECTIONS MADE 1955