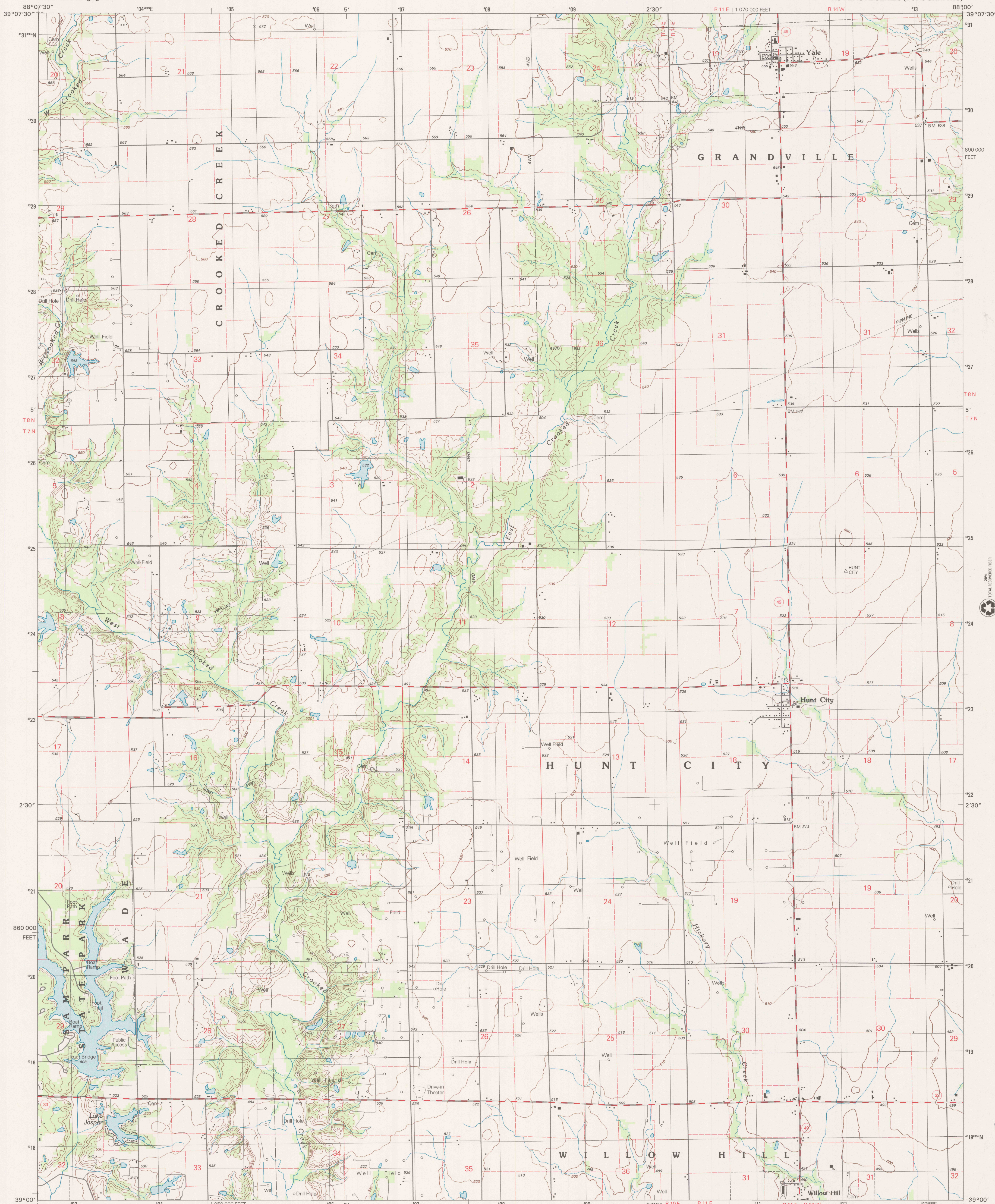




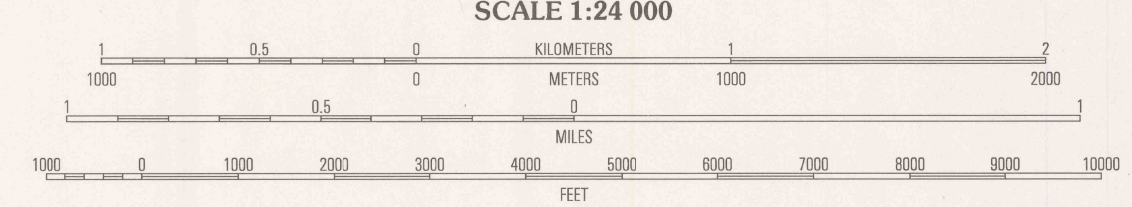
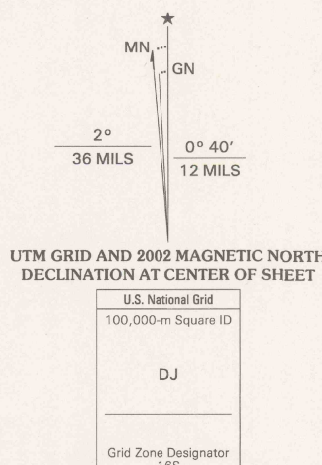
U.S. DEPARTMENT OF THE INTERIOR
U.S. GEOLOGICAL SURVEY

YALE QUADRANGLE
ILLINOIS-JASPER CO.
7.5-MINUTE SERIES (TOPOGRAPHIC)



Produced by the United States Geological Survey

Contours.....National Elevation Dataset, 1981
Roads.....Illinois Department of Transportation, 2001
Other Planimetry.....1998
Public Land Survey System and Survey Control.....1983
Boundaries.....2002
Woodland.....LANDSAT 7, 2001
Houses of Worship, Schools, and Other Labeled Buildings.....1983
North American Datum of 1927 (NAD 27) is shown by dashed corner ticks. The values of the shift between NAD 83 and NAD 27 for 7.5-minute intersections are obtainable from National Geodetic Survey NADCON software
There may be private inholdings within the boundaries of the National or State reservations shown on this map



CONTOUR INTERVAL 10 FEET
NORTH AMERICAN VERTICAL DATUM OF 1988
TO CONVERT FROM FEET TO METERS, MULTIPLY BY 0.3048

THIS MAP COMPLIES WITH NATIONAL MAP ACCURACY STANDARDS
FOR SALE BY U.S. GEOLOGICAL SURVEY, P.O. BOX 25286, DENVER, COLORADO 80225
AND ILLINOIS GEOLOGICAL SURVEY, CHAMPAIGN, ILLINOIS 61820
A FOLDER DESCRIBING TOPOGRAPHIC MAPS AND SYMBOLS IS AVAILABLE ON REQUEST



ROAD CLASSIFICATION

Primary highway	Light-duty road, hard or improved surface
Secondary highway	Unimproved road
Interstate Route	U.S. Route
	State Route

1	2	3	1 Greenup
			2 Hazel Dell
			3 Moriah
			4 Rose Hill
			5 Ohlong North
			6 Newton
			7 Site Marie
			8 Ohlong South

ADJOINING 7.5' QUADRANGLES

YALE, IL
1998
NIMA 3362 II SE-SERIES V863



U.S. GEOLOGICAL SURVEY
LIBRARY
APR 21 2003
RESTON, VA