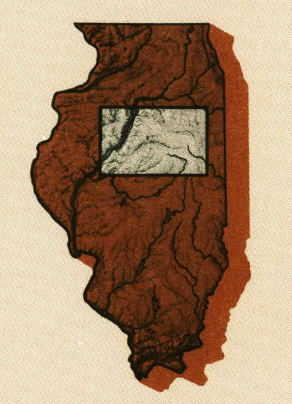


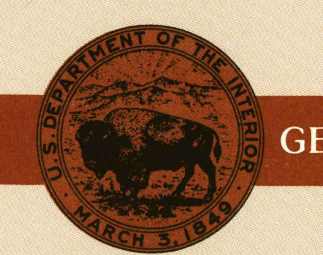
Peoria ILLINOIS

1:250 000-scale metric
topographic map



1 X 2 DEGREE QUADRANGLE
SHOWING

- Contours and elevations in meters
- Highways, roads and other manmade structures
- Water features
- Woodland areas
- Geographic names



GEOLOGICAL SURVEY

1990

Produced by the United States Geological Survey
Compiled from USGS 1:100 000-scale maps dated 1985-1989
Supersedes map dated 1958. Map edited 1990
North American Datum of 1983 (NAD 83). Projection and
10 000-meter grid: Universal Transverse Mercator, zone 16
25 000-meter grid ticks: Illinois Coordinate System of 1983
(east and west zones).
The difference between NAD 83 and North American Datum of
1927 (NAD 27) for 7.5 minute intersections is given in USGS
Bulletin 1875
There may be private inholdings within the boundaries of
the National or State reservations shown on this map
Areas covered by dashed light-blue pattern
are subject to controlled inundation

1990 MAGNETIC DECLINATION FROM TRUE NORTH VARIES
FROM 1/2° (9 MILS) WESTERLY FOR THE CENTER OF THE
WEST EDGE TO 1° (18 MILS) WESTERLY FOR THE CENTER
OF THE EAST EDGE. MEAN ANNUAL CHANGE IS 8.9° WESTERLY

CONTOUR INTERVAL 20 METERS
SUPPLEMENTAL CONTOUR INTERVAL 10 METERS
NATIONAL GEODETIC VERTICAL DATUM OF 1929
ELEVATIONS SHOWN TO THE NEAREST METER

THIS MAP COMPLIES WITH NATIONAL MAP ACCURACY STANDARDS

AUG 27 1990

REC'D FILE COPY

CONVERSION TABLE			
Meters	Feet	Feet	Meters
1	3.2808	1	0.3048
2	6.5617	2	0.6096
3	9.8425	3	0.9144
4	13.1234	4	1.2192
5	16.4042	5	1.5240
6	19.6850	6	1.8288
7	22.9659	7	2.1336
8	26.2467	8	2.4384
9	29.5276	9	2.7432
10	32.8084	10	3.0480

To convert meters to feet
multiply by 3.2808

To convert feet to meters
multiply by 0.3048

ADJOINING MAPS		
1	2	3
1	2	3
4		5
6	7	8

1 Davenport
2 Aurora
3 Chicago
4 Burlington
5 Danville
6 Quincy
7 Decatur
8 Indianapolis

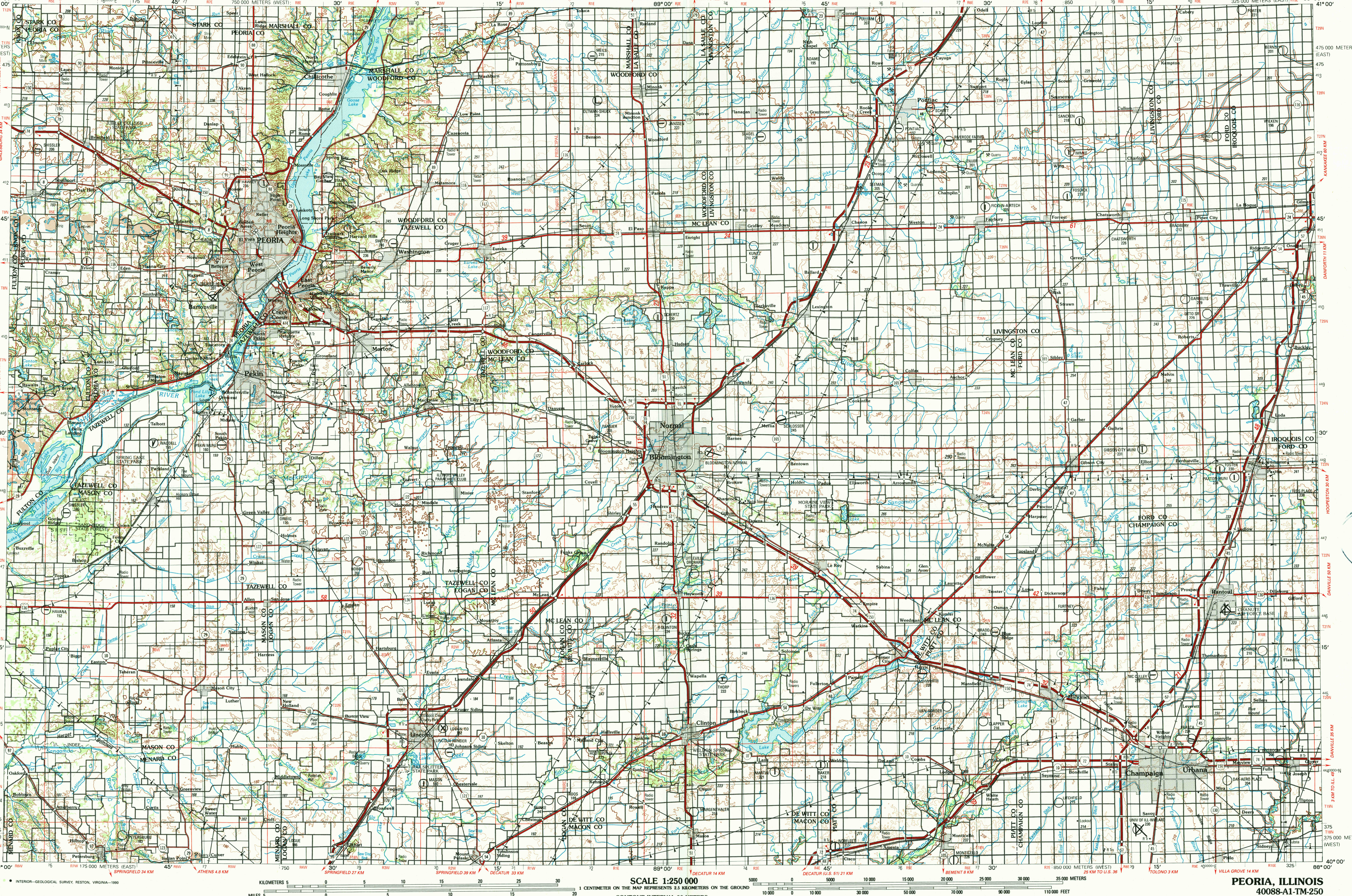
FOR SALE BY U.S. GEOLOGICAL SURVEY
DENVER, COLORADO 80225, OR RESTON, VIRGINIA 22092

Topographic Map Symbols

- Dual highway, interchange
- Primary highway, hard surface
- Secondary highway, hard surface
- Light duty road, hard or improved surface
- Other road, trail
- Route marker: Interstate; U.S.; State
- Bridge: overpass, underpass
- Tunnel: road, railroad
- Railroad: standard gauge; single, multiple track
- Railroad: narrow gauge; single, multiple track
- Bulkup area; locality, elevation
- Airport; runway pattern known; unknown
- National boundary
- State boundary
- County boundary
- National or State reservation boundary
- Land grant boundary
- U.S. public lands survey: range, township (surveyed)
- U.S. public lands survey: range, township (contracted)
- Powerline; pipeline: aboveground, underground
- Dam; landmark feature; landmark building
- Well: water, other; spring; tank
- Cave; mine, quarry; oil platform
- Landmark area; landmark rockstack
- Disturbed surface: strip mine, low, sand
- Contours: index; intermediate; supplementary
- Bathymetric contours: index; primary
- Bathymetric contours: intermediate; supplementary
- Stream, lake: perennial; intermittent
- Rapids, large and small; falls, large and small
- Land subject to controlled inundation; marsh, swamp
- Woodland; orchard, vineyard
- Mangrove

Figures in red denote approximate distances in kilometers between markers
A pamphlet describing topographic maps is available on request

PEORIA, ILLINOIS



SCALE 1:250 000
1 CENTIMETER ON THE MAP REPRESENTS 2.5 KILOMETERS ON THE GROUND
CONTOUR INTERVAL 20 METERS
SUPPLEMENTAL CONTOUR INTERVAL 10 METERS

PEORIA, ILLINOIS
40088-A1-TM-250
1990