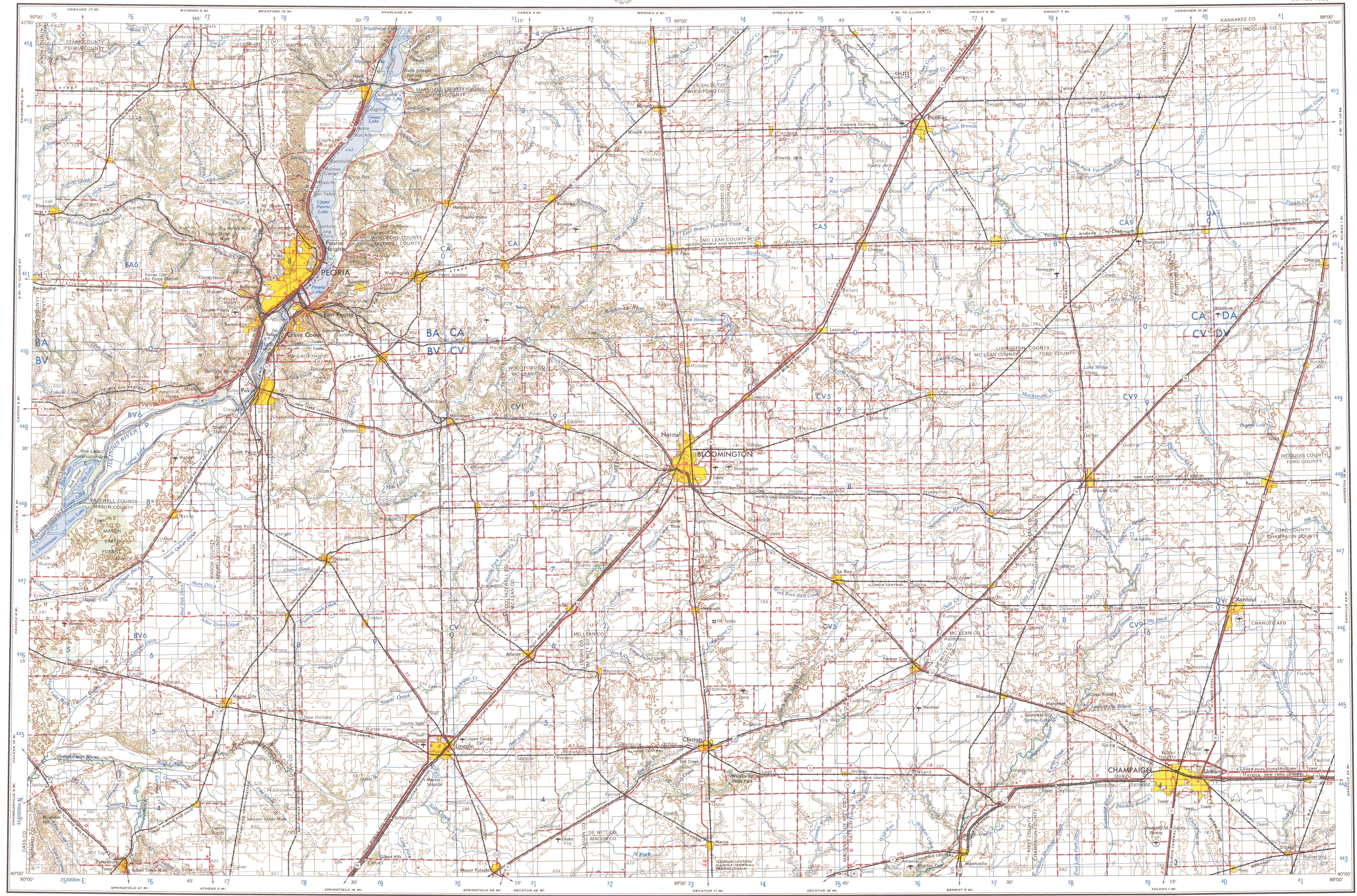


# PEORIA



V501  
Edition 1-AMS (First Printing 9-61)  
Prepared by the Army Map Service (KCSX), Corps of Engineers, U.S. Army, Washington, D. C. Compiled in 1957 by photogrammetric methods and from: United States Quadrangles, 1:25,000, 1:48,000, 1:50,000, 1:62,500, AMS, U. S. Geological Survey, edition 1911-1957. Planimetric detail revised by photogrammetric methods. Horizontal and vertical control by USGS, USGS and C. C. Map files checked, 1958.

**LEGEND**  
ROAD DATA 1958  
Figures in red denote approximate distances in miles between stars

**POPULATED PLACES**

Over 500,000	100,000 to 500,000	25,000 to 100,000	5,000 to 25,000	1,000 to 5,000	Less than 1,000
--------------	--------------------	-------------------	-----------------	----------------	-----------------

**ROADS**

Hard surface, heavy duty	More than two lanes wide	Two lanes wide; Federal route marker	Hard surface, medium duty	More than two lanes wide	Two lanes wide; State route marker	Improved light duty	Unimproved dirt	Trail
--------------------------	--------------------------	--------------------------------------	---------------------------	--------------------------	------------------------------------	---------------------	-----------------	-------

**RAILROADS**

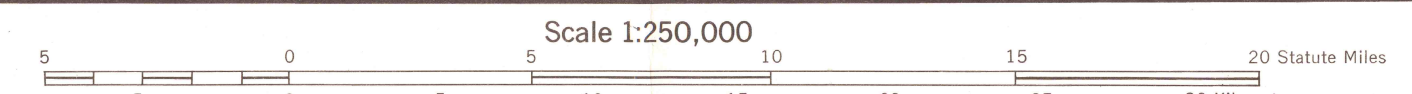
Standard gauge	Narrow gauge	Double or Multiple
----------------	--------------	--------------------

**BOUNDARIES**

Landplane airport	Landing area	Seaplane airport	Seaplane anchorage	Woods brushwood
-------------------	--------------	------------------	--------------------	-----------------

**LANDMARKS**

School; Church; Other	Horizontal control point	Spot elevation in feet	Marsh or swamp	Intermittent or dry stream	Power line
-----------------------	--------------------------	------------------------	----------------	----------------------------	------------



CONTOUR INTERVAL 50 FEET  
WITH SUPPLEMENTARY CONTOUR AT 25 FOOT INTERVALS  
TRANSVERSE MERCATOR PROJECTION

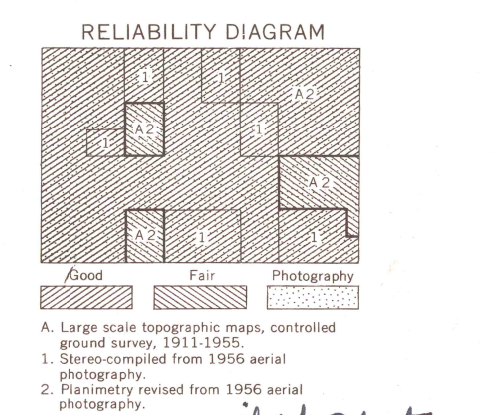
BLUE NUMBERED LINES INDICATE THE 10,000 METER UNIVERSAL TRANSVERSE MERCATOR GRID, ZONE 16  
THE LAST FOUR DIGITS OF THE GRID NUMBERS ARE OMITTED

NOTE: MAGNETIC DECLINATION FOR THIS SHEET VARIES FROM 10°00' EASTERLY FOR THE CENTER OF THE WEST EDGE TO 12°00' WESTERLY FOR THE CENTER OF THE EAST EDGE. NEAR ANNUAL CHANGE IS NEGLIGIBLE.

USERS: NOTE ANY ERRORS OR OMISSIONS ON THIS MAP ARE USED TO MARK HEREON AND FORWARDED DIRECTLY TO COMMANDING OFFICER, ARMY MAP SERVICE, WASHINGTON, D. C. MAPS SO FORWARDED WILL BE RETURNED OR REPLACED IF DESIRED.

LOCATION DIAGRAM FOR NK 16-10

MISSOURI	ILLINOIS	INDIANA	OHIO	KENTUCKY	TENNESSEE	MISSISSIPPI	ALABAMA	GEORGIA	FLORIDA
16-10	16-11	16-12	16-13	16-14	16-15	16-16	16-17	16-18	16-19



GRID ZONE IDENTIFICATION

16	16	16	16	16	16	16	16	16	16
16	16	16	16	16	16	16	16	16	16

TO GIVE A STANDARD REFERENCE TO THIS SHEET TO NEAREST 1000 METERS

NOTE: THE SMALLER FIGURES OF ANY GRID NUMBER ARE USED FOR IDENTIFYING THE FULL COORDINATE. THE ONLY THE LARGER FIGURE OF THE GRID LINE TO IDENTIFY THE FULL COORDINATE.

EXAMPLE: 4440000



United States. Topo. 1:250,000.  
sheet Peoria,  
cop. 1.